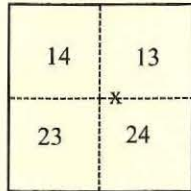


CORNER RECORD

Agency Index CR-18-163

Document Number _____

City of lodi County of San Joaquin, CaliforniaBrief Legal Description Center of the intersection of Harney Lane and Banyan Drive.**CORNER TYPE****COORDINATES (Optional)**

T3N,R6E,MDM

- Government Corner Control
 Meander Property
 Rancho Other

Date of Survey May 30, 2018

N. _____ E. _____

Elevation _____

Units Metric U.S. Survey Foot

Horizontal Datum _____

Zone _____ Epoch Date _____

Vertical Datum _____

 Complies with Public Resources Code §§8801-8819 Complies with Public Resources Code §§8890-8902

PLS Act Ref.:

 8765(d) 8771 8773 Other:

Corner/

 Left as found Established Rebuilt Pre-Construction

Monument:

 Found and tagged Reestablished Referenced Post-Construction

Narrative of corner identified and monument as found, set, reset, replaced, or removed:

 See sheet #2 for description(s):**SURVEYOR'S STATEMENT**

This Corner Record was prepared by me or under my direction in conformance with

the Professional Land Surveyors' Act on July 17, 2018Signed Michael L. Foulk

P.L.S. or R.C.E. No.

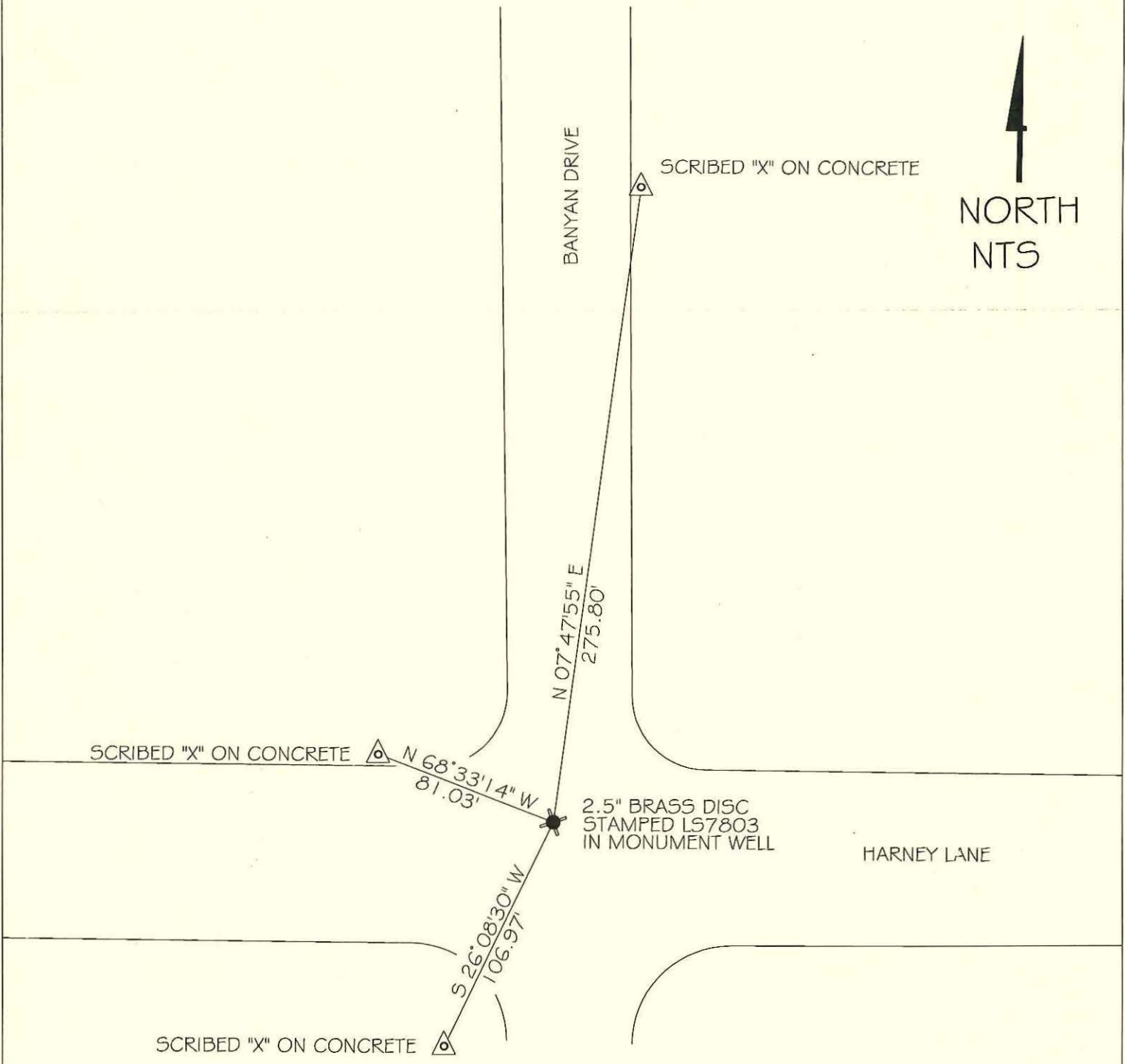
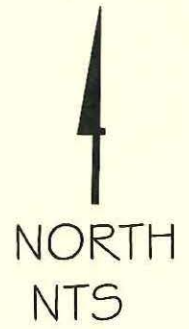
P.L.S. 7803**COUNTY SURVEYOR'S STATEMENT**This Corner Record was received September 21, 2018and examined and filed September 21, 2018Signed James E. Hart

P.L.S. or R.C.E. No.

8657Title Acting County Surveyor

County Surveyor's Comment





LEGEND

- ✖ SET MONUMENT AS NOTED
- △ FOUND REFERENCE POINTS AS SHOWN ON CR-17-190