

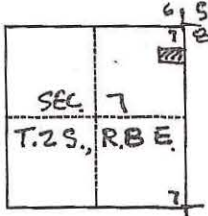
CORNER RECORD

Agency Index CR-18-161

Document Number _____

City of _____ County of SAN JOAQUIN, California

Brief Legal Description REESTABLISHED S.E CORNER PER R.S. 18-19.



CORNER TYPE

- Government Corner
- Meander
- Rancho
- Control
- Property
- Other

Date of Survey 8-1-2018

COORDINATES (Optional)

N. _____ E. _____

Elevation _____

Units Metric U.S. Survey Foot

Horizontal Datum _____

Zone _____ Epoch Date _____

Vertical Datum _____

Complies with Public Resources Code §§8801-8819

Complies with Public Resources Code §§8890-8902

PLS Act Ref.: 8765(d) 8771 8773 Other:

Corner/Monument: Left as found Established Rebuilt Pre-Construction

Found and tagged Reestablished Referenced Post-Construction

Narrative of corner identified and monument as found, set, reset, replaced, or removed:

See sheet #2 for description(s):

SURVEYOR'S STATEMENT

This Corner Record was prepared by me or under my direction in conformance with

the Professional Land Surveyors' Act on 8-1-2018

Signed Ronald P. Waldum P.L.S. or R.C.E. No. 16835



COUNTY SURVEYOR'S STATEMENT

This Corner Record was received September 21, 2018

and examined and filed September 21, 2018

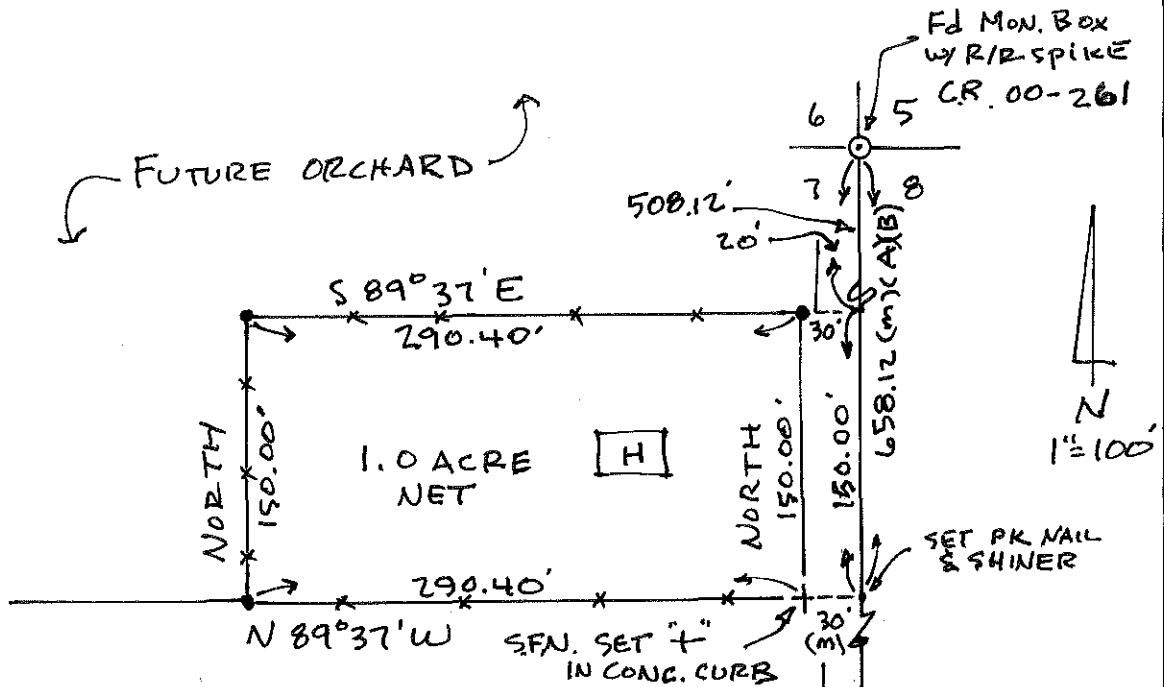
Signed James E. Hart P.L.S. or R.C.E. No. 8657

Title Acting County Surveyor

County Surveyor's Comment _____



D.D. SHEET No. 60



• Fd 3/4" REBAR PER R.S. 18-19
 MEASUREMENTS PER R.S. 18-19 & DEED
 DOC. # 2015-077324.

(m) MEASURED DISTANCE

(A) R.S. 18-19

(B) DEED DOC. # 2015-077324

S.F.N. SEARCHED FOUND NOTHING

H. HOUSE

C.R. CORNER RECORD
 SAN JOAQUIN COUNTY SURVEYOR

XX EXISTING 6' HIGH CHAIN LINK FENCE,

I.P. IRON PIPE

Fd. FOUND

N. RIPON ROAD

E 1/4 COR.
 Fd. MON. BOX
 w/ 1/4" PIN
 • C.R. 00-260
 Fd. HUB & TACK
 • P.M. 25-199
 Fd 2" I.P.

F.B. 36-9