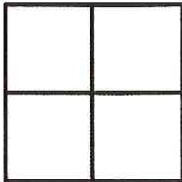


# CORNER RECORD

Agency Index CR-18-154  
 Document Number \_\_\_\_\_

City of Tracy County of San Joaquin, California  
 Brief Legal Description Corner of the 72.935 acre parcel per Record of Survey (35-RS-78).



**CORNER TYPE**

Government Corner  Control   
 Meander  Property   
 Rancho  Other

Date of Survey April 30, 2018

**COORDINATES (Optional)**

N. \_\_\_\_\_ E. \_\_\_\_\_  
 Elevation \_\_\_\_\_  
 Units Metric  U.S. Survey Foot   
 Horizontal Datum \_\_\_\_\_  
 Zone \_\_\_\_\_ Epoch Date \_\_\_\_\_  
 Vertical Datum \_\_\_\_\_

Complies with Public Resources Code §§8801-8819  
 Complies with Public Resources Code §§8890-8902

PLS Act Ref:  8765 (d)  8771  8773  Other: \_\_\_\_\_

Corner/Monument:  Left as found  Established  Rebuilt  Pre-Construction  
 Found and tagged  Reestablished  Referenced  Post-Construction

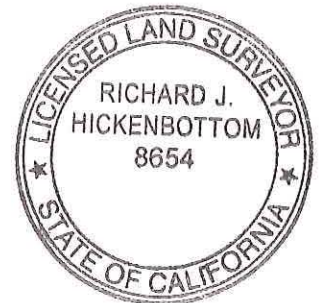
Narrative of corner identified and monument as found, set, reset, replaced, or removed:  
 See sheet #2 for description (s) :

Set nail and washer stamped "LS 8654", along the centerline of Arbor Avenue, at the easterly corner common to the 72.935 acre parcel and the 23.201 acres parcel as shown on that Record of Survey recorded April 8, 2003 in book 35 of Surveys at page 78.

### SURVEYOR'S STATEMENT

This Corner Record was prepared by me or under my direction in conformance with the Professional Land Surveyors' Act on May 2, 2018.

Signed [Signature] P.L.S. or R.C.E. No. 8654



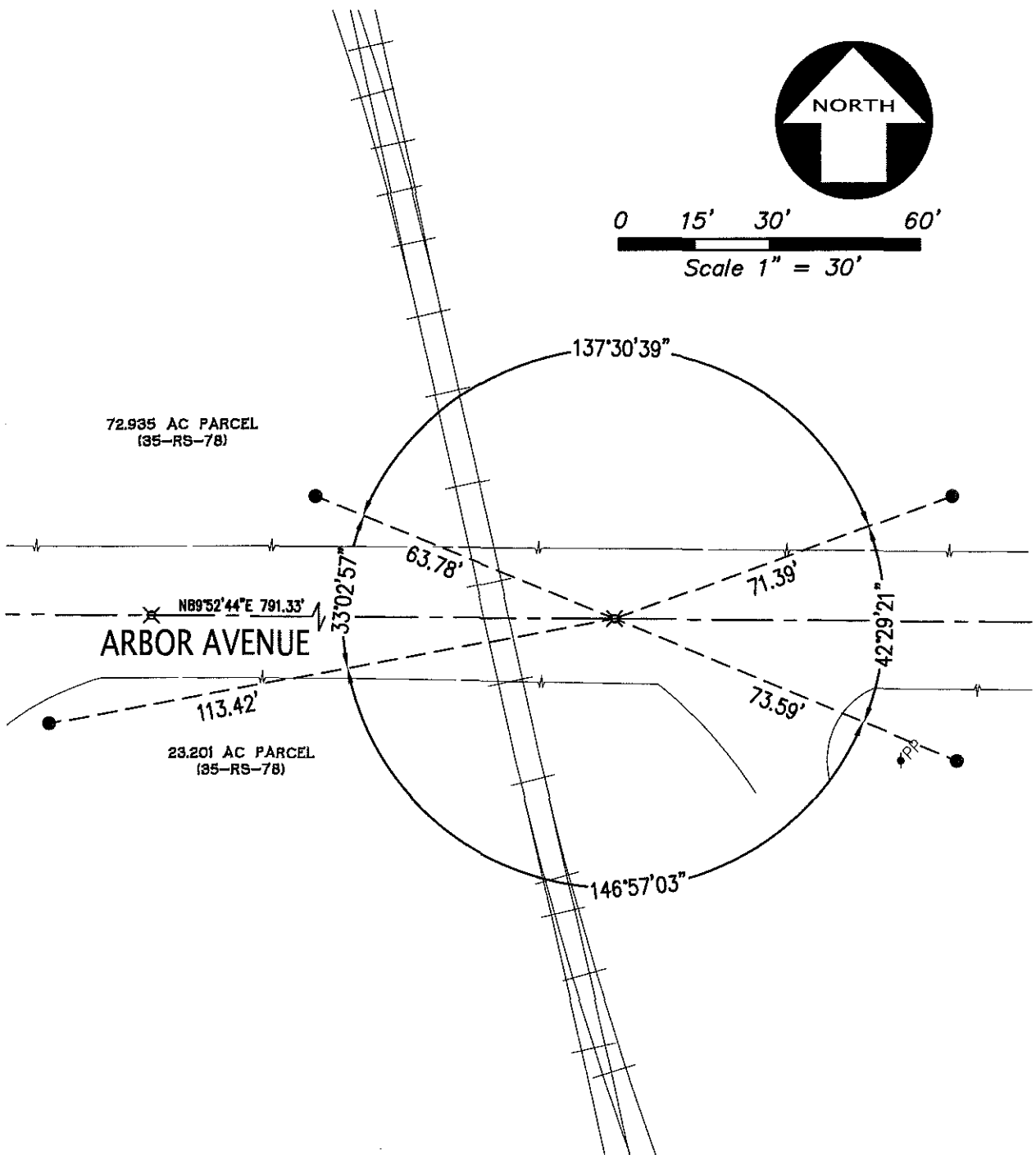
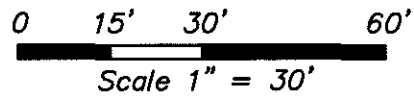
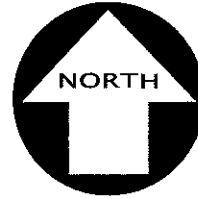
### COUNTY SURVEYOR'S STATEMENT

This Corner Record was received August 24, 2018  
 and examined and filed August 24, 2018

Signed James E. Hart P.L.S. or R.C.E. No. 8657  
 Title Acting County Surveyor

County Surveyor's Comment \_\_\_\_\_





**LEGEND**

- FOUND 3/4" DIAMETER, 18" LONG IRON PIPE W/ PLUG "LS8654" PER CR-17-195
- ⊗ SET MAG NAIL W/TAG "LS8654"
- +— EDGE OF PAVEMENT
- ||| RAILROAD TRACKS
- PP POWER POLE