

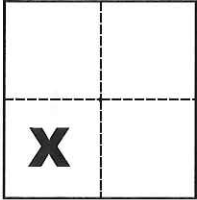
CORNER RECORD

Agency Index CR-18-149

Document Number _____

City of _____ County of San Joaquin, California

Brief Legal Description _____ Parcel "A" as shown on P.M. 14-21

CORNER TYPE**COORDINATES (Optional)**
 Government Corner Control
 Meander Property
 Rancho Other

N. _____ E. _____

Elevation _____

Units Metric U.S. Survey Foot

Horizontal Datum _____

Zone _____ Epoch Date _____

Date of Survey March 8, 2018

Vertical Datum _____

 Complies with Public Resources Code §§8801-8819 Complies with Public Resources Code §§8890-8902Sec. 7, T.3S., R.6E.,
M.D.B. & M.PLS Act Ref.: 8765(d) 8771 8773 Other:Corner/Monument: Left as found Established Rebuilt Pre-Construction Found and tagged Reestablished Referenced Post-Construction

Narrative of corner identified and monument as found, set, reset, replaced, or removed:

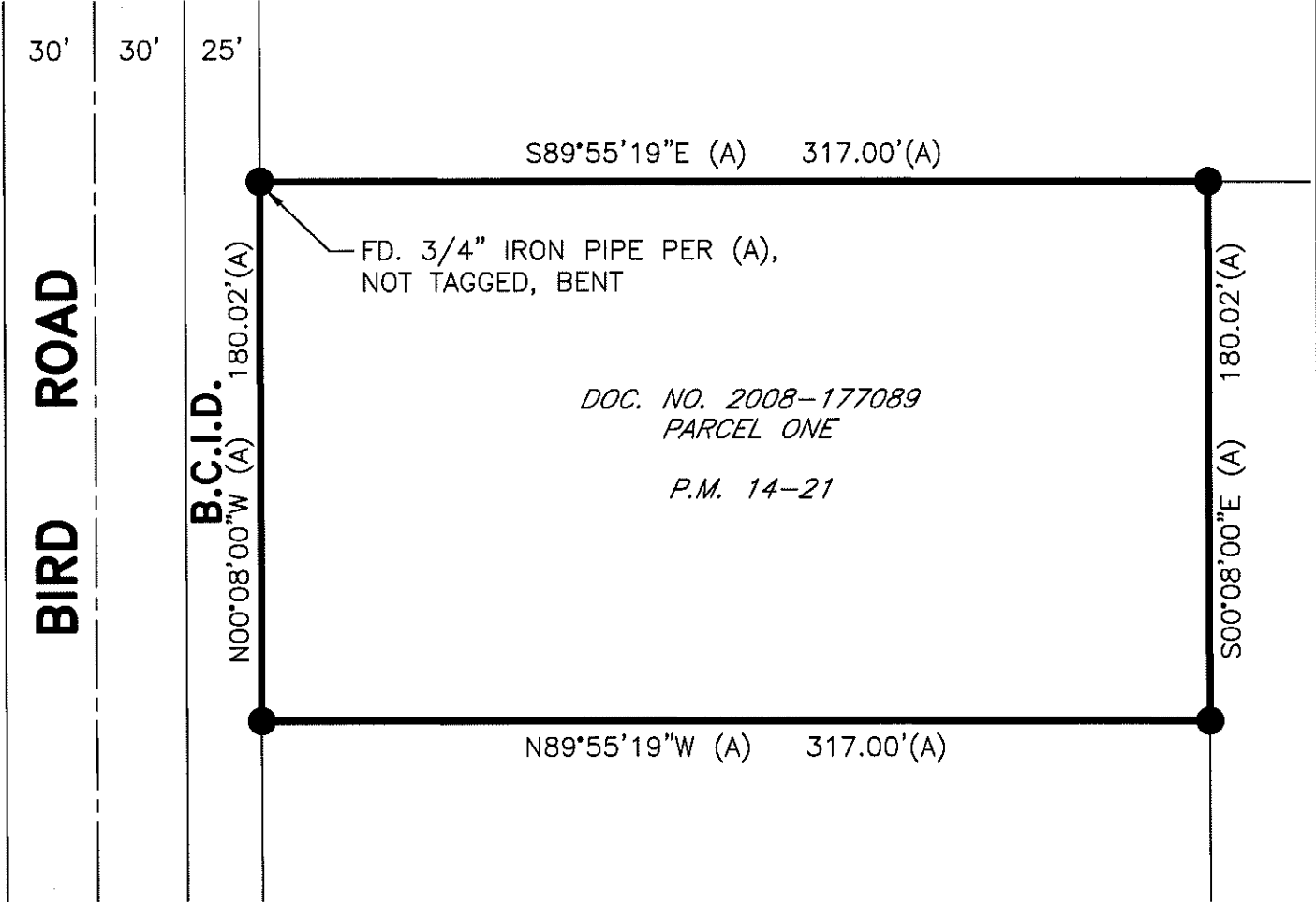
 See sheet #2 for description(s):**SURVEYOR'S STATEMENT**

This Corner Record was prepared by me or under my direction in conformance with

the Professional Land Surveyors' Act on July 19, 2018Signed Michael L. Quaranta P.L.S. or R.C.E. No. L.S. 4450**COUNTY SURVEYOR'S STATEMENT**This Corner Record was received August 8, 2018and examined and filed August 8, 2018Signed James E. Hart P.L.S. or R.C.E. No. 8657Title Acting County Surveyor

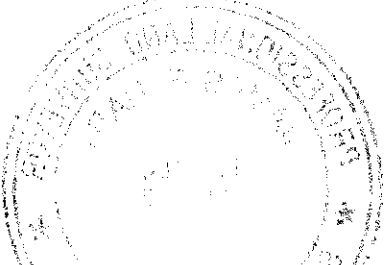
County Surveyor's Comment _____





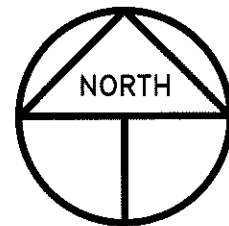
LEGEND

- INDICATES FOUND 3/4" IRON PIPE W/PLASTIC CAP STAMPED LS 4858 PER (A), UNLESS OTHERWISE NOTED
- P.M. INDICATES PARCEL MAP, BOOK AND PAGE, S.J.C.R.
- S.J.C.R. INDICATES SAN JOAQUIN COUNTY RECORDS
- DOC. NO. INDICATES DOCUMENT NUMBER, S.J.C.R.



REFERENCE

(A) P.M. 14-21, S.J.C.R.



SCALE: 1" = 60'
2018-49