

CORNER RECORD

Agency Index CR-18-148

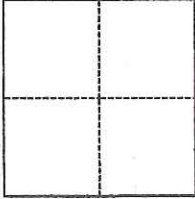
Document Number _____

City of _____ County of SAN JOAQUIN, California

Brief Legal Description PORTION OF LOTS 13 & 14, BLOCK 12 OF "HUTCHINS ADDITION TO LODI"

CORNER TYPE

COORDINATES (Optional)



- Government Corner
- Meander
- Rancho
- Control
- Property
- Other

Date of Survey May 1, 2018

N. _____ E. _____

Elevation _____

Units Metric U.S. Survey Foot

Horizontal Datum _____

Zone _____ Epoch Date _____

Vertical Datum _____

Complies with Public Resources Code §§8801-8819

Complies with Public Resources Code §§8890-8902

PLS Act Ref.: 8765(d) 8771 8773 Other:

Corner/Monument: Left as found Established Rebuilt Pre-Construction

Found and tagged Reestablished Referenced Post-Construction

Narrative of corner identified and monument as found, set, reset, replaced, or removed:

See sheet #2 for description(s):

FOUND, RESET AND TAGGED MONUMENTS AS SHOWN ON THE ATTACHED EXHIBIT MAP.

SURVEYOR'S STATEMENT

This Corner Record was prepared by me or under my direction in conformance with

the Professional Land Surveyors' Act on May 2, 2018

Signed Walter John Sharp P.L.S. or R.C.E. No. 7736



COUNTY SURVEYOR'S STATEMENT

This Corner Record was received August 8, 2018

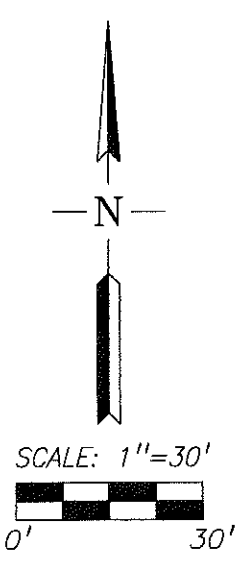
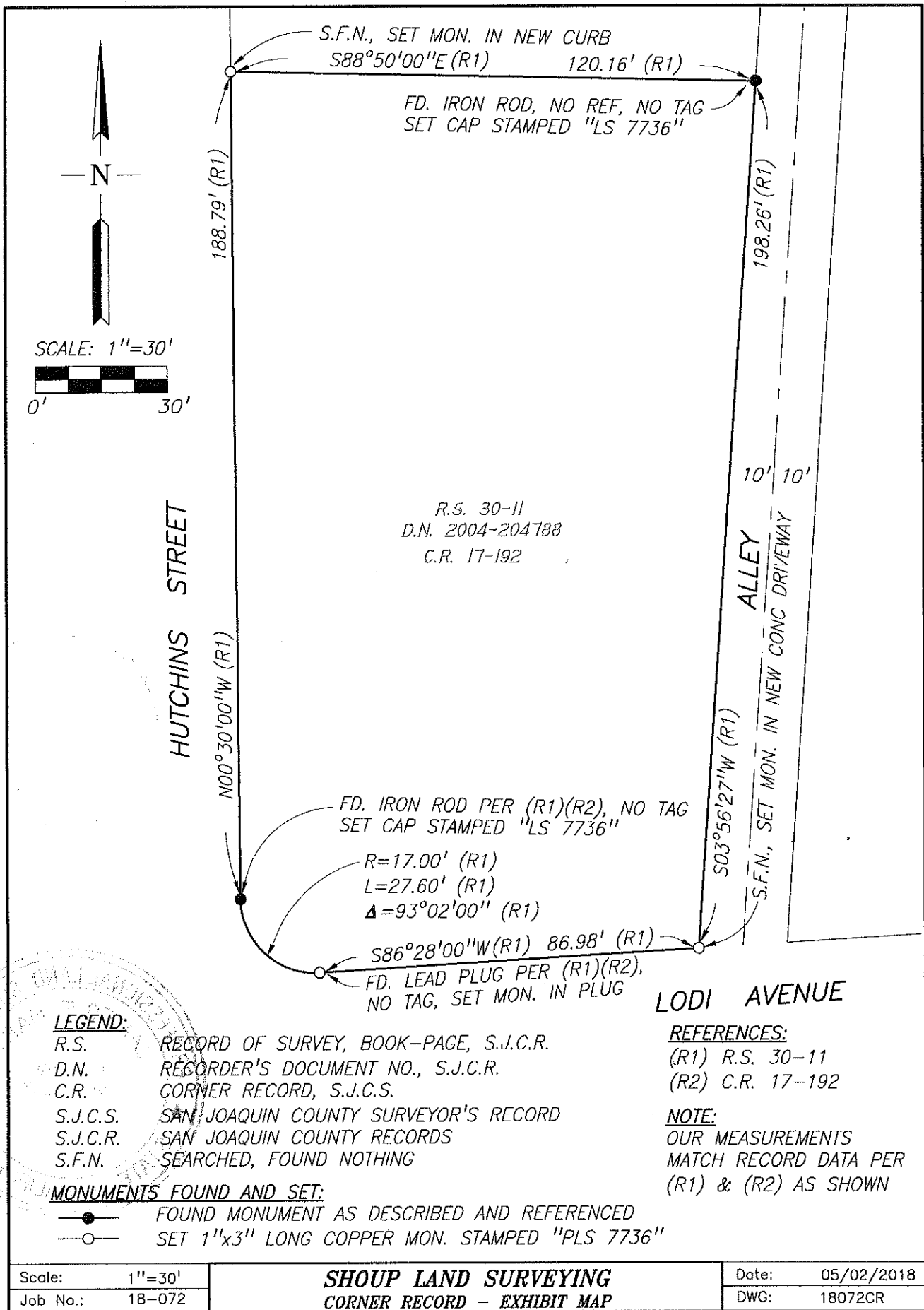
and examined and filed August 8, 2018

Signed James E. Hart P.L.S. or R.C.E. No. 8657

Title Acting County Surveyor

County Surveyor's Comment _____





R.S. 30-11
 D.N. 2004-204788
 C.R. 17-192

LEGEND:

- R.S. RECORD OF SURVEY, BOOK-PAGE, S.J.C.R.
- D.N. RECORDER'S DOCUMENT NO., S.J.C.R.
- C.R. CORNER RECORD, S.J.C.S.
- S.J.C.S. SAN JOAQUIN COUNTY SURVEYOR'S RECORD
- S.J.C.R. SAN JOAQUIN COUNTY RECORDS
- S.F.N. SEARCHED, FOUND NOTHING

MONUMENTS FOUND AND SET:

- FOUND MONUMENT AS DESCRIBED AND REFERENCED
- SET 1"x3" LONG COPPER MON. STAMPED "PLS 7736"

LODI AVENUE

REFERENCES:

- (R1) R.S. 30-11
- (R2) C.R. 17-192

NOTE:

OUR MEASUREMENTS MATCH RECORD DATA PER (R1) & (R2) AS SHOWN

Scale: 1"=30'	SHOUP LAND SURVEYING CORNER RECORD - EXHIBIT MAP	Date: 05/02/2018
Job No.: 18-072		DWG: 18072CR