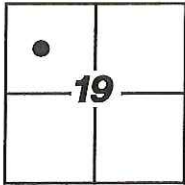


CORNER RECORD

Agency Index: CR-18-146
Document Number: _____

City of STOCKTON County of SAN JOAQUIN, California

Brief Legal Description FOUND MONUMENT AT THE INTERSECTION OF N. EL DORADO STREET AND E. HARDING WAY LOCATED IN THE NORTH HALF OF SECTION 19, C.M. WEBER GRANT.



C.M. WEBER GRANT

CORNER TYPE

- Government Corner
- Meander
- Rancho
- Control
- Property
- Other

Date of Survey 3-2-2018

COORDINATES (Optional)

- N. _____ E. _____
 Elevation _____
 Units Metric U.S. Survey Foot
 Horizontal Datum _____
 Zone _____ Epoch Date _____
 Vertical Datum _____
 Complies with Public Resources Code SS8801-8819
 Complies with Public Resources Code SS8890-8902

PLS Act Ref: 8765(d) 8771 8773 Other: _____

Corner/
Monument: Left as found Established Rebuilt Pre-Construction
 Found and Tagged Reestablished Referenced Post-Construction

Narrative of corner identified and monument as found, set, reset, replaced, or removed:

See sheet #2 for description(s):

SCRIBED "X" MONUMENTS AS SHOWN ON C.R.-18-18 WERE REMOVED DURING CONSTRUCTION. SET CONCRETE NAILS WITH BRASS TAGS STAMPED "LS 6953" TO REPLACE MONUMENTS, ALL AS SHOWN ON SHEET 2

SURVEYOR'S STATEMENT

This Corner Record was prepared by me or under my direction in conformance with the Land Surveyors' Act on MARCH 16, 2018,

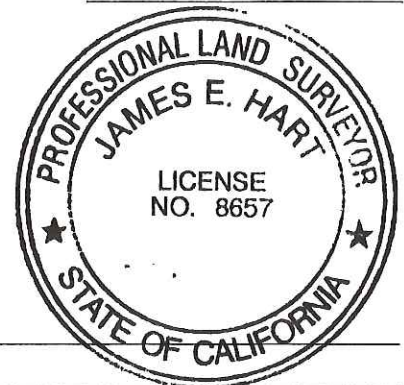
Signed [Signature] P.L.S. or R.C.E. Number 6953



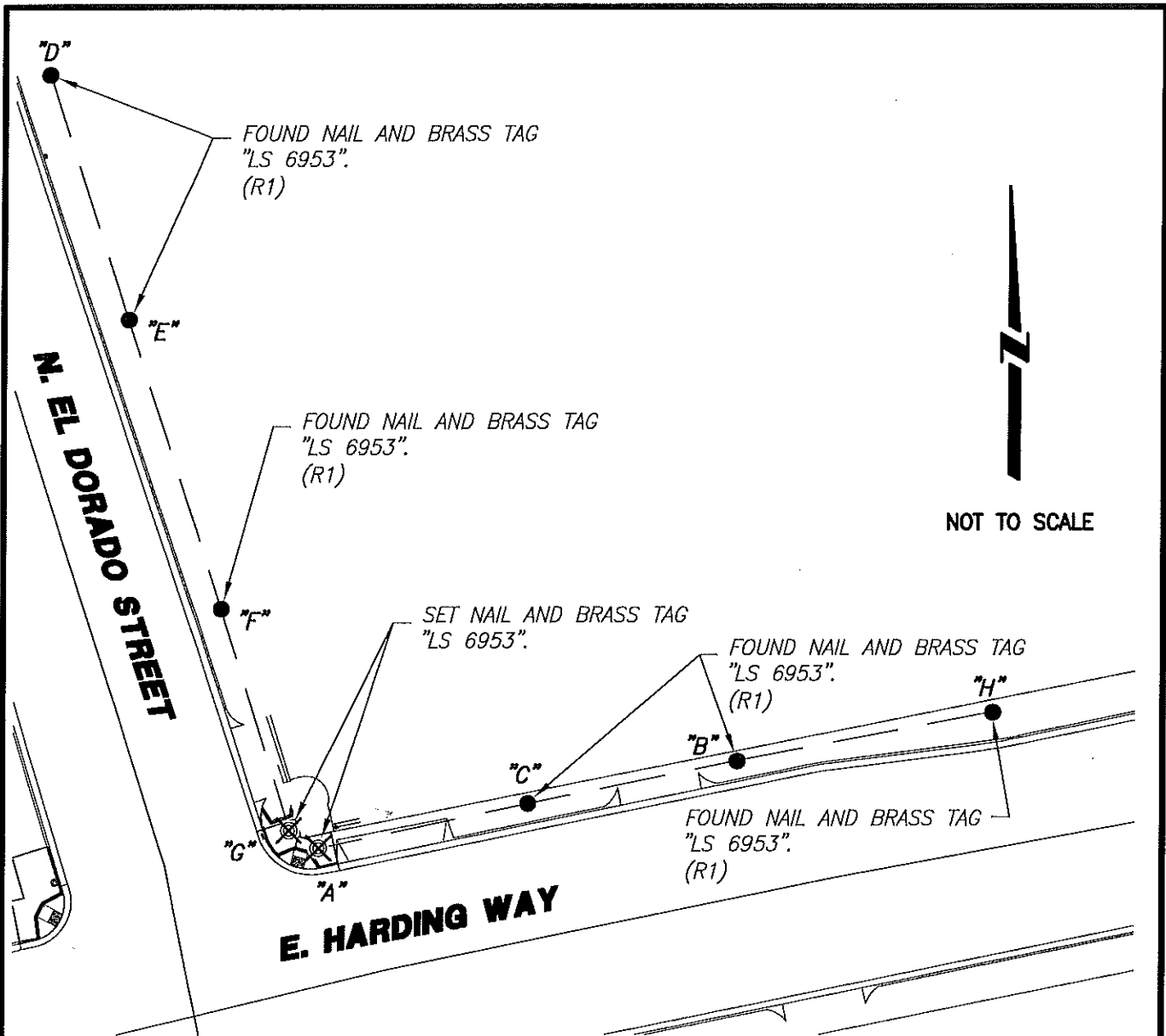
COUNTY SURVEYOR'S STATEMENT

This Corner Record was received August 6, 2018
and examined and filed August 6, 2018.

Signed James E. Hart P.L.S. or R.C.E. No: 8657
Title Acting County Surveyor



County Surveyor's Comment _____



REFERENCES:

(R1) C.R.-18-18

LEGEND:

- ⊗ SET CONCRETE NAIL WITH BRASS TAG
L.S. 6953.
- FOUND MONUMENT AS NOTED.
- M&P- MAPS & PLATS
- S.J.C.R. SAN JOAQUIN COUNTY RECORDS
- (M) MEASURED DISTANCE. ALL DISTANCES ARE MEASURED
UNLESS NOTED OTHERWISE.
- C.R. CORNER RECORD

X AND DISTANCE TABLE		
BS-@-FS	X	FS DISTANCE
B-A-H	00°00'00"	196.557'(M)(R1)
B-A-B	00°00'00"	122.317'(M)(R1)
B-A-C	00°00'00"	61.340'(M)(R1)
D-G-D	00°00'00"	226.865'(M)(R1)
D-G-E	00°00'00"	153.325'(M)(R1)
D-G-F	00°00'00"	66.507'(M)(R1)

NOTE:

THIS CORNER RECORD DOES NOT VERIFY THIS MONUMENT TO BE IN THE CORRECT POSITION.