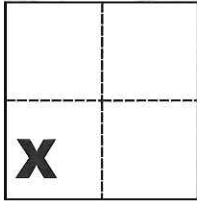


# CORNER RECORD

Agency Index CR-18-144

Document Number \_\_\_\_\_

City of \_\_\_\_\_ County of San Joaquin, CaliforniaBrief Legal Description 1 Ac. Parcel Per R.S. 12-172**CORNER TYPE****COORDINATES (Optional)**

Government Corner  Control   
 Meander  Property   
 Rancho  Other

N. \_\_\_\_\_ E. \_\_\_\_\_

Elevation \_\_\_\_\_

Units Metric  U.S. Survey Foot 

Horizontal Datum \_\_\_\_\_

Zone \_\_\_\_\_ Epoch Date \_\_\_\_\_

Date of Survey October 4, 2016

Vertical Datum \_\_\_\_\_

 Complies with Public Resources Code §§8801-8819 Complies with Public Resources Code §§8890-8902Sec. 26, T.1S., R.5E.,  
M.D.B. & M.PLS Act Ref.:  8765(d)  8771  8773  Other:Corner/Monument:  Left as found  Established  Rebuilt  Pre-Construction Found and tagged  Reestablished  Referenced  Post-Construction

Narrative of corner identified and monument as found, set, reset, replaced, or removed:

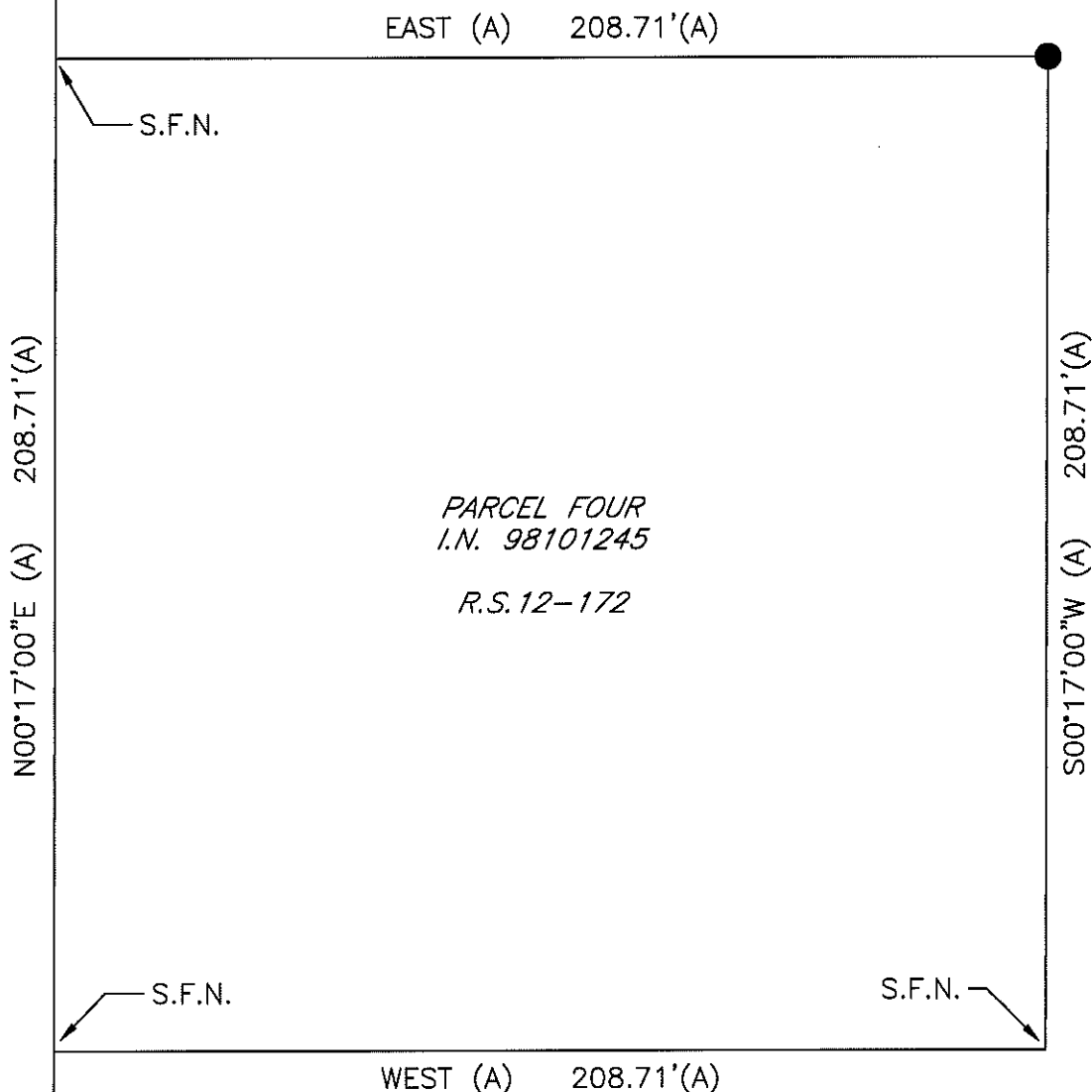
 See sheet #2 for description(s):**SURVEYOR'S STATEMENT**

This Corner Record was prepared by me or under my direction in conformance with

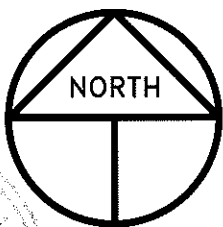
the Professional Land Surveyors' Act on July 16, 2018Signed Michael L. Quaranta P.L.S. or R.C.E. No. L.S. 4450**COUNTY SURVEYOR'S STATEMENT**This Corner Record was received August 6, 2018and examined and filed August 6, 2018Signed James E. Hart P.L.S. or R.C.E. No. 8657Title Acting County Surveyor

County Surveyor's Comment \_\_\_\_\_





PARCEL FOUR  
 I.N. 98101245  
 R.S. 12-172



**REFERENCE**

(A) R.S. 12-172, S.J.C.R.

SCALE: 1" = 40'  
 2016-218

**LEGEND**

- INDICATES FOUND 3/4" IRON PIN PER (A), SET PLASTIC CAP STAMPED LS 4450
- R.S. INDICATES RECORD OF SURVEY, BOOK AND PAGE, S.J.C.R.
- I.N. INDICATES INSTRUMENT NUMBER, S.J.C.R.
- S.J.C.R. INDICATES SAN JOAQUIN COUNTY RECORDS
- S.F.N. INDICATES SEARCHED FOUND NOTHING