

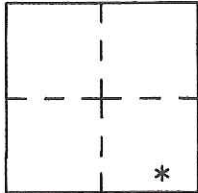
# CORNER RECORD

Agency Index CR-18-143  
Document Number \_\_\_\_\_

City of Ripon County of San Joaquin, California  
Brief Legal Description Southeast corner of Parcel shown on Bk 27 RS 110

### CORNER TYPE

### COORDINATES (Optional)



Government Corner  Control   
Meander  Property   
Rancho  Other

N. \_\_\_\_\_ E. \_\_\_\_\_  
Elevation. \_\_\_\_\_  
Units Metric  U.S. Survey Foot   
Horizontal Datum NAD 83  
Zone 3 Epoch Date 2005  
Vertical Datum \_\_\_\_\_

Date of Survey April 18, 2018

Complies with Public Resources Code §§8801-8819  
 Complies with Public Resources Code §§8890-8902

S.13 T.2S., R7E  
M.D.M.

PLS Act Ref.:  8765(d)  8771  8773  Other:  
Corner/Monument:  Left as found  Established  Rebuilt  Pre-Construction  
 Found and tagged  Reestablished  Referenced  Post-Construction

Narrative of corner identified and monument as found, set, reset, replaced, or removed:

See sheet #2 for description(s):

Using the City of Ripon GPS survey control network, Record of Survey Book 35, page 196, as coordinate control, I measured the tie points and the found monuments as found per Record of Survey Book 27, page 110.

### SURVEYOR'S STATEMENT

This Corner Record was prepared by me or under my direction in conformance with

the Professional Land Surveyor's Act on April 18, 2018

Signed David Lee Harris P.L.S. or R.C.E. No. PLS 5443



### COUNTY SURVEYOR'S STATEMENT

This Corner Record was received July 31, 2018

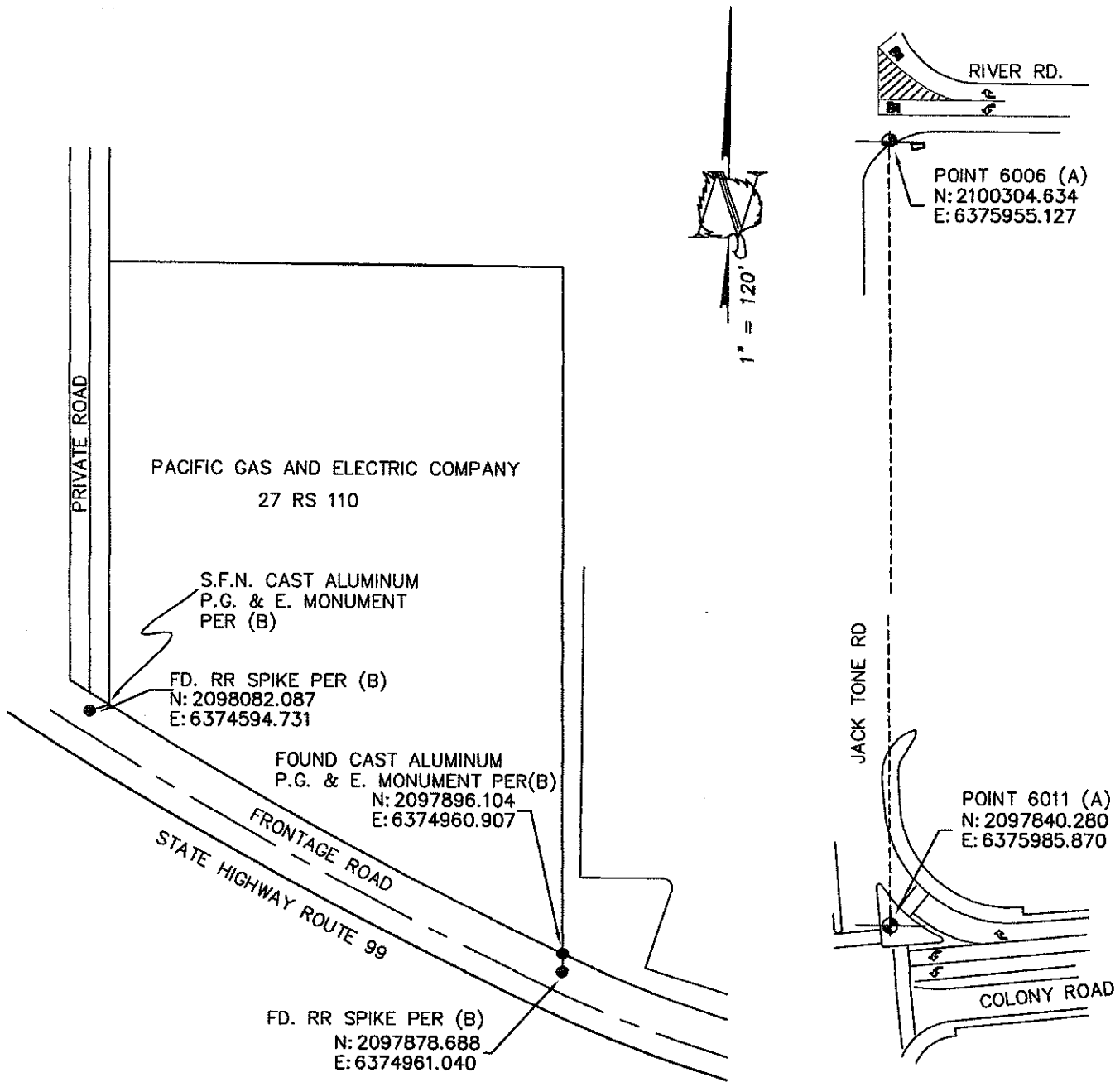
and examined and filed July 31, 2018

Signed James E. Hart P.L.S. or R.C.E. No. 8657

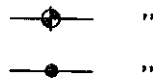
Title Acting County Surveyor

County Surveyor's Comment





- (A) BOOK 35 OF SURVEYS, PAGE 196
- (B) BOOK 27 OF SURVEYS, PAGE 110



FOUND 2"-1/2" BRASS CAP FOR  
CITY OF RIPON CONTROL POINT PER (A)  
FOUND MONUMENT PER (B)

NOTE:  
COORDINATES SHOWN WERE TAKEN  
FROM CITY OF RIPON G.P.S. SURVEY  
CONTROL NETWORK RECORD OF SURVEY  
BOOK 35, PAGE 196, SAN JOAQUIN  
COUNTY RECORDS. COMBINED SCALE  
FACTOR: 0.999926085



**BEFORE CONSTRUCTION**