

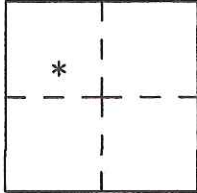
CORNER RECORD

Agency Index CR-18-142
Document Number _____

City of Escalon County of San Joaquin, California
Brief Legal Description Lots 18 & 20 in Block 2 (suppliment to) Map of Escalon 4 M&P 13

CORNER TYPE

COORDINATES (Optional)



Government Corner Control
Meander Property
Rancho Other

N. _____ E. _____
Elevation. _____
Units Metric U.S. Survey Foot
Horizontal Datum _____
Zone _____ Epoch Date _____
Vertical Datum _____

Date of Survey May 9, 2018

Complies with Public Resources Code §§8801-8819
 Complies with Public Resources Code §§8890-8902

S.4 T.2S.,R9E
M.D.M.

PLS Act Ref.: 8765(d) 8771 8773 Other:
Corner/Monument: Left as found Established Rebuilt Pre-Construction
 Found and tagged Reestablished Referenced Post-Construction

Narrative of corner identified and monument as found, set, reset, replaced, or removed:

See sheet #2 for description(s):

The position of Lot corners for Lots 18 & 20, Block 2, were calculated using information shown on Book 28 of Surveys, page 154. A search for additional evidence was found. It is presumed that "other" found iron pipes were set on a survey prepared by Darrhl Dentoni, former City Engineer of the City of Escalon. Prior to resetting the subjecty Lot corners, their positions were verified with line of occupation. 3/4" framing pins were set for Lot corners as shown.

SURVEYOR'S STATEMENT

This Corner Record was prepared by me or under my direction in conformance with

the Professional Land Surveyor's Act on May 9, 2018

Signed David Lee Harris P.L.S. or R.C.E. No. PLS 5443



COUNTY SURVEYOR'S STATEMENT

This Corner Record was received July 31, 2018

and examined and filed July 31, 2018

Signed James E. Hart P.L.S. or R.C.E. No. 8657

Title Acting County Surveyor

County Surveyor's Comment _____

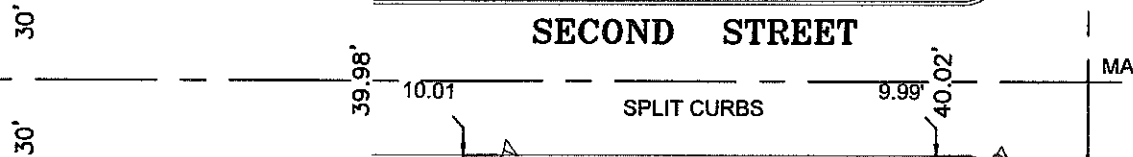


D.D. SHEET No. 62

SFN SFN SFN

SECOND STREET

MANHOLE



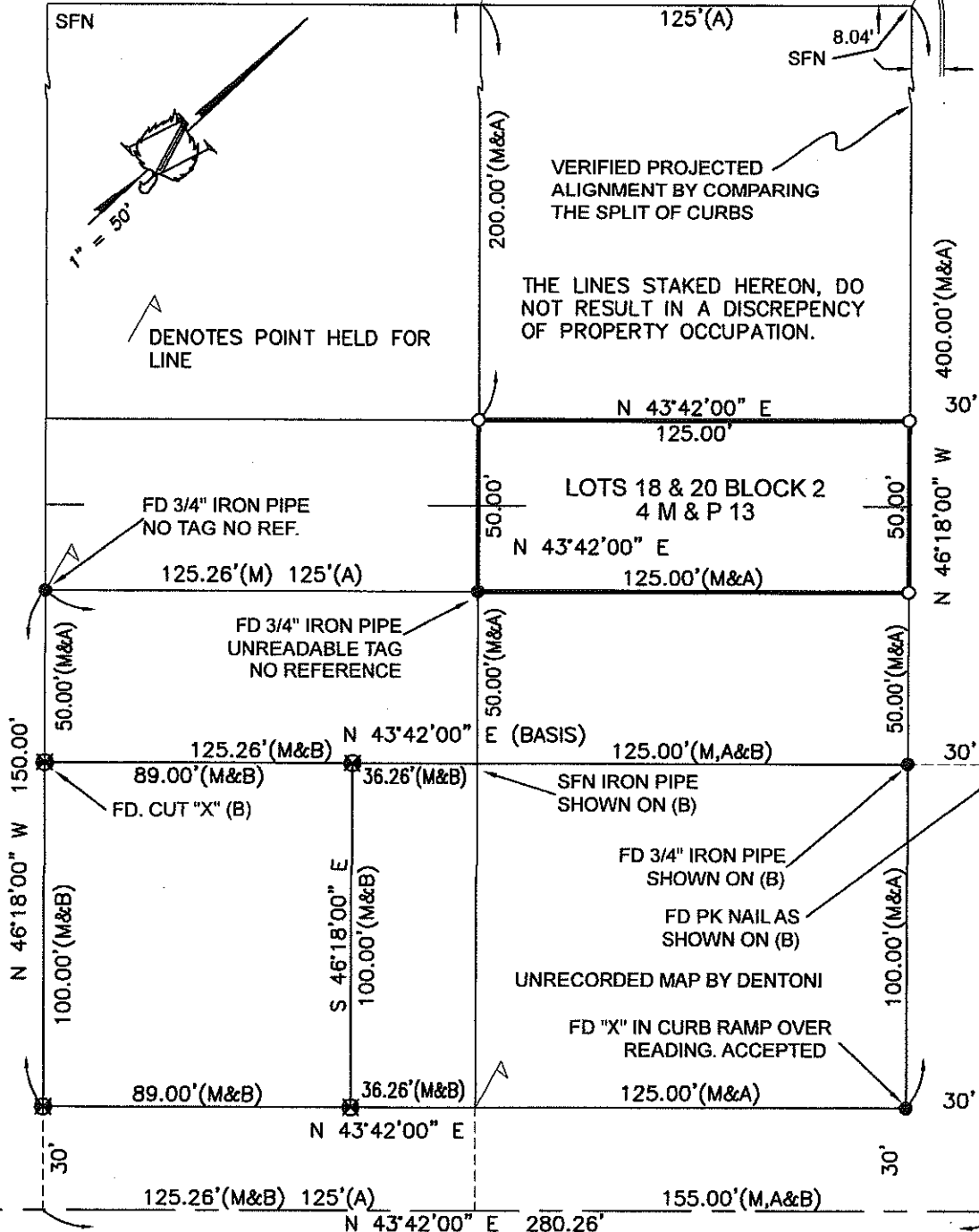
SFN SFN SFN

VERIFIED PROJECTED ALIGNMENT BY COMPARING THE SPLIT OF CURBS

THE LINES STAKED HEREON, DO NOT RESULT IN A DISCREPANCY OF PROPERTY OCCUPATION.

DENOTES POINT HELD FOR LINE

MAIN STREET



COLEY AVENUE

THIRD STREET

MANHOLE

- (A) VOL. 4 OF MAPS & PLATS, PAGE 13
- (B) BOOK 28 OF SURVEYS, PAGE 154

- " MONUMENT 3/4" IRON PIPE L.S. 3580 PER (B)
- " FOUND MONUMENT AS NOTED
- " SET 3/4" FRAMING PIN WITH TAG LS 5443

ASPEN SURVEY
COMPANY, INC.
 1121 OAKDALE RD., STE. 6 MODESTO, CA 95355
 PH: (209) 526-9724 FX: (209) 526-0472