

CORNER RECORD

Agency Index CR-18-141
Document Number _____

City of Stockton County of San Joaquin, California
Brief Legal Description Lot 7 of Block 29, M&P 11-104

CORNER TYPE

COORDINATES (Optional)



- Government Corner
- Meander
- Rancho
- Control
- Property
- Other

N. _____ E. _____
 Elevation _____
 Units Metric U.S. Survey Foot
 Horizontal Datum _____
 Zone _____ Epoch Date _____
 Vertical Datum _____
 Complies with Public Resources Code §§8801-8819
 Complies with Public Resources Code §§8890-8902

Date of Survey June 7, 2018

T.2N., R.6E., M.D.B.&M.

- PLS Act Ref.: 8765(d) 8771 8773 Other: _____
- Corner/Monument: Left as found Established Rebuilt Pre-Construction
 Found and tagged Reestablished Referenced Post-Construction

Narrative of corner identified and monument as found, set, reset, replaced, or removed:
 See sheet #2 for description(s):



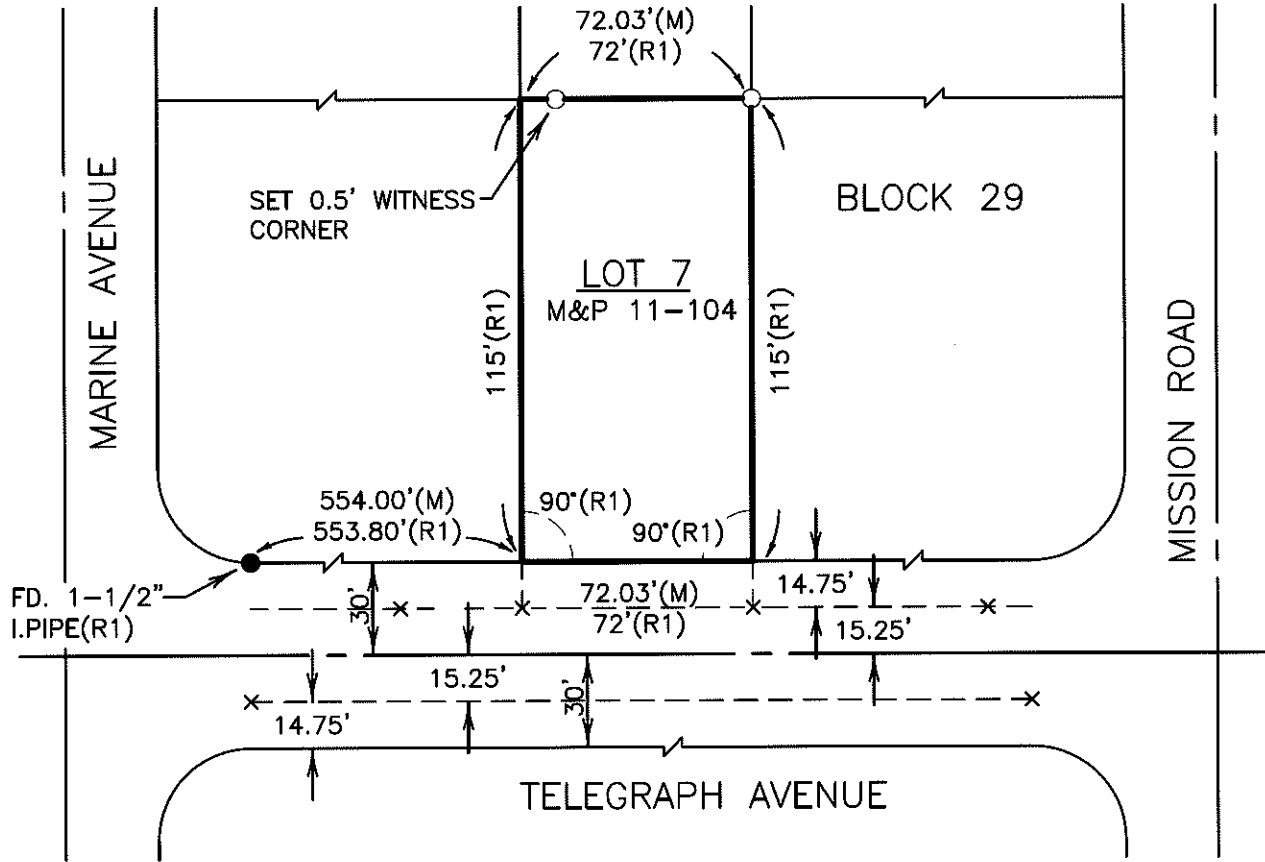
SURVEYOR'S STATEMENT

This Corner Record was prepared by me or under my direction in conformance with
 the Professional Land Surveyors' Act on June 8, 2018
 Signed Joe Murphy P.L.S. or R.C.E. No. L.S. 7269

COUNTY SURVEYOR'S STATEMENT

This Corner Record was received August 1, 2018
 and examined and filed August 1, 2018
 Signed James E. Hart P.L.S. or R.C.E. No. 8657
 Title Acting County Surveyor
 County Surveyor's Comment _____





LEGEND

- FD. ● FOUND MONUMENT AS NOTED
- I.P.I.P.E ○ SET 3/4" X 30" IRON ROD, WITH CAP STAMPED "L.S. 7269"
- (M) MEASURED
- (R1) FOUND CHISELED "X"

REFERENCES

(R1) M&P 11-104

DILLON & MURPHY
 CONSULTING CIVIL ENGINEERS

ENGINEERING • PLANNING • SURVEYING
 847 N. CLIFF AVENUE, SUITE A2, LODI, CALIFORNIA 95240 (209) 334-6613
 1851