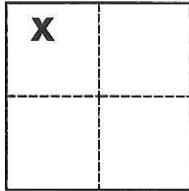


CORNER RECORD

Agency Index CR-18-140
 Document Number _____

City of _____ County of San Joaquin, California
 Brief Legal Description West line of Document No. 2014-122691 per R.S. 39-22



Sec. 18, T.3N., R.6E.
 M.D.B. & M.

CORNER TYPE

Government Corner Control
 Meander Property
 Rancho Other

Date of Survey May 30, 2018

COORDINATES (Optional)

N. _____ E. _____

Elevation _____

Units Metric U.S. Survey Foot

Horizontal Datum _____

Zone _____ Epoch Date _____

Vertical Datum _____

Complies with Public Resources Code §§8801-8819

Complies with Public Resources Code §§8890-8902

PLS Act Ref.: 8765(d) 8771 8773 Other:

Corner/Monument: Left as found Established Rebuilt Pre-Construction
 Found and tagged Reestablished Referenced Post-Construction

Narrative of corner identified and monument as found, set, reset, replaced, or removed:
 See sheet #2 for description(s):

Retracement of lines as depicted on R.S. 39-22. Found no material discrepancies and set a new monument along the west line of D.N. 2014-122691

SURVEYOR'S STATEMENT

This Corner Record was prepared by me or under my direction in conformance with

the Professional Land Surveyors' Act on May 30, 2018

Signed [Signature] P.L.S. or R.C.E. No. P.L.S. 7889



COUNTY SURVEYOR'S STATEMENT

This Corner Record was received August 1, 2018

and examined and filed August 1, 2018

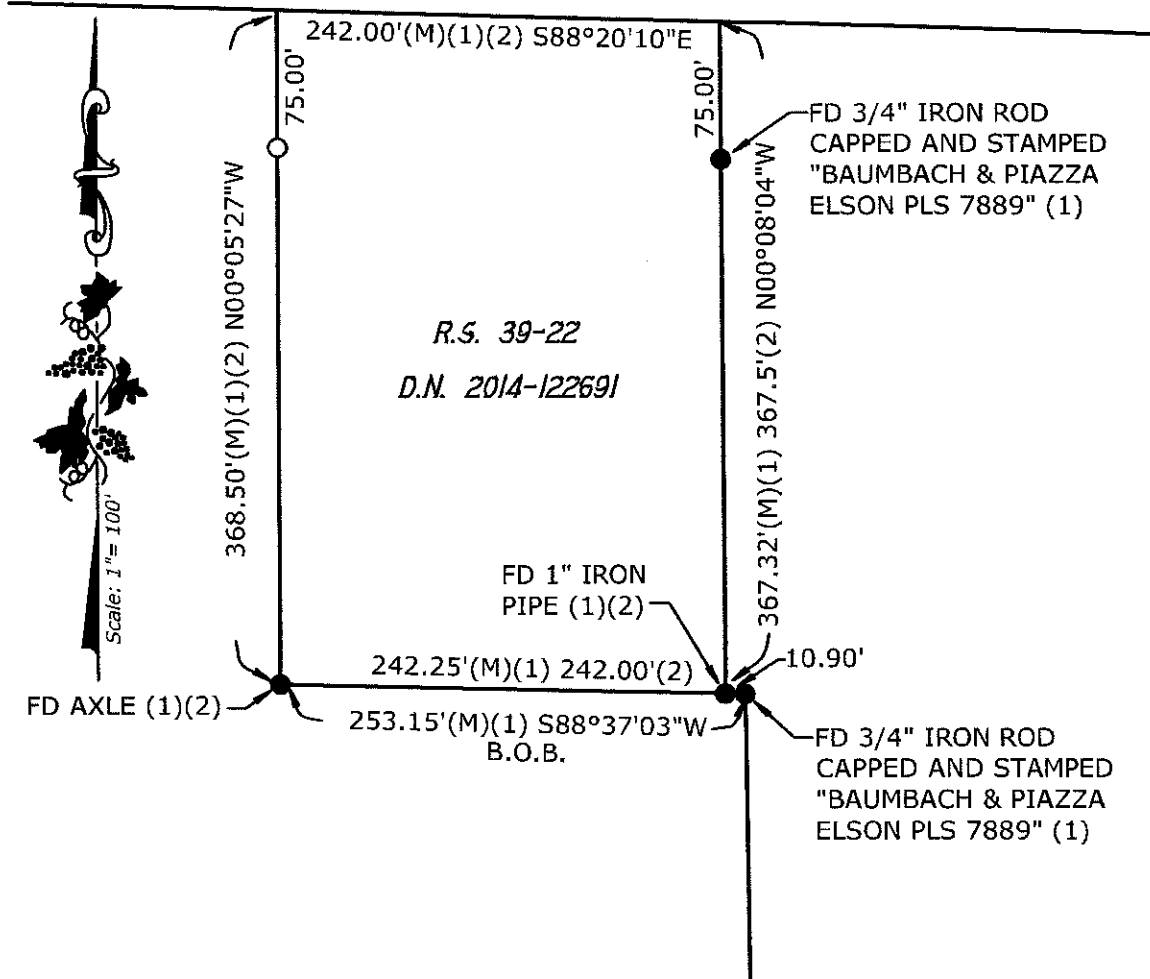
Signed James E. Hart P.L.S. or R.C.E. No. 8657

Title Acting County Surveyor

County Surveyor's Comment



STATE HIGHWAY ROUTE NO. 12



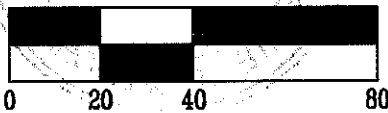
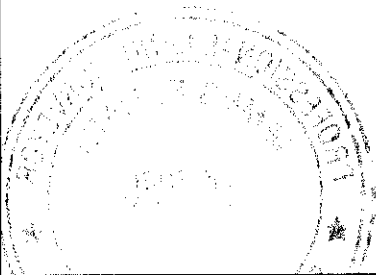
REFERENCES

- (1) R.S. 39-22
- (2) D.N. 2014-122691

LEGEND:

- B.O.B. BASIS OF BEARINGS
- FD FOUND
- D.N. DOCUMENT NUMBER
- (M) MEASURED
- R.S. RECORD OF SURVEY
- SET 3/4" X 30" IRON ROD CAPPED AND STAMPED "BAUMBACH & PIAZZA ELSON PLS 7889"
- FD MONUMENT AS NOTED.

S:\Projects\2016\16028\3_Drawings\16028_CS.dwg 07/10/16 3:13pm-JES:SH-KMG: 06c11_IP_P.dwg



PREPARED IN THE OFFICE OF:

1534-B

BAUMBACH & PIAZZA, INC.
CIVIL ENGINEERS • SURVEYORS

www.bpengineers.net
209.368.6618

323 W. Elm St.
Lodi, CA 95240