

# CORNER RECORD

Agency Index: CR-18-139

Document Number: \_\_\_\_\_

City of RIPON

County of SAN JOAQUIN, California

Brief Legal Description 6' WITNESS CORNER ON THE SIDEWALK BETWEEN 1425 AND 1431 STANLEY DRIVE, FOR LOTS 70 AND 71 AS SHOWN ON 26-M&P-139, S.J.C.R.



T.2S, R.8E

### CORNER TYPE

- Government Corner     Control  
 Meander                     Property  
 Rancho                         Other

Date of Survey 4-27-2018

### COORDINATES (Optional)

N. \_\_\_\_\_ E. \_\_\_\_\_

Elevation \_\_\_\_\_

Units  Metric  U.S. Survey Foot

Horizontal Datum \_\_\_\_\_

Zone \_\_\_\_\_ Epoch Date \_\_\_\_\_

Vertical Datum \_\_\_\_\_

Complies with Public Resources Code SS8801-8819

Complies with Public Resources Code SS8890-8902

PLS Act Ref:  8765(d)     8771     8773     Other:

Corner/  
Monument:  Left as found     Established     Rebuilt     Pre-Construction  
 Found and Tagged     Reestablished     Referenced     Post-Construction

Narrative of corner identified and monument as found, set, reset, replaced, or removed:

See sheet #2 for description(s):

CHISELED CROSS ON SIDEWALK BEING A 6' WITNESS CORNER FOR LOTS 70 AND 71 AS SHOWN ON BOOK 26 OF MAPS AND PLATS AT PAGE 139, SAN JOAQUIN COUNTY RECORDS WAS REMOVED WITH CONSTRUCTION ACTIVITIES. REESTABLISHED 6' WITNESS CORNER AND SET A NAIL WITH BRASS TAG STAMPED "LS6953" USING THE SWING TIES AS SHOWN ON CORNER RECORD CR-18-65, ALL AS SHOWN ON SHEET 2.

### SURVEYOR'S STATEMENT

This Corner Record was prepared by me or under my direction in conformance with the Land Surveyors' Act on MAY 11, 2018,

Signed [Signature] P.L.S. or R.C.E. Number 6953



### COUNTY SURVEYOR'S STATEMENT

This Corner Record was received August 1, 2018

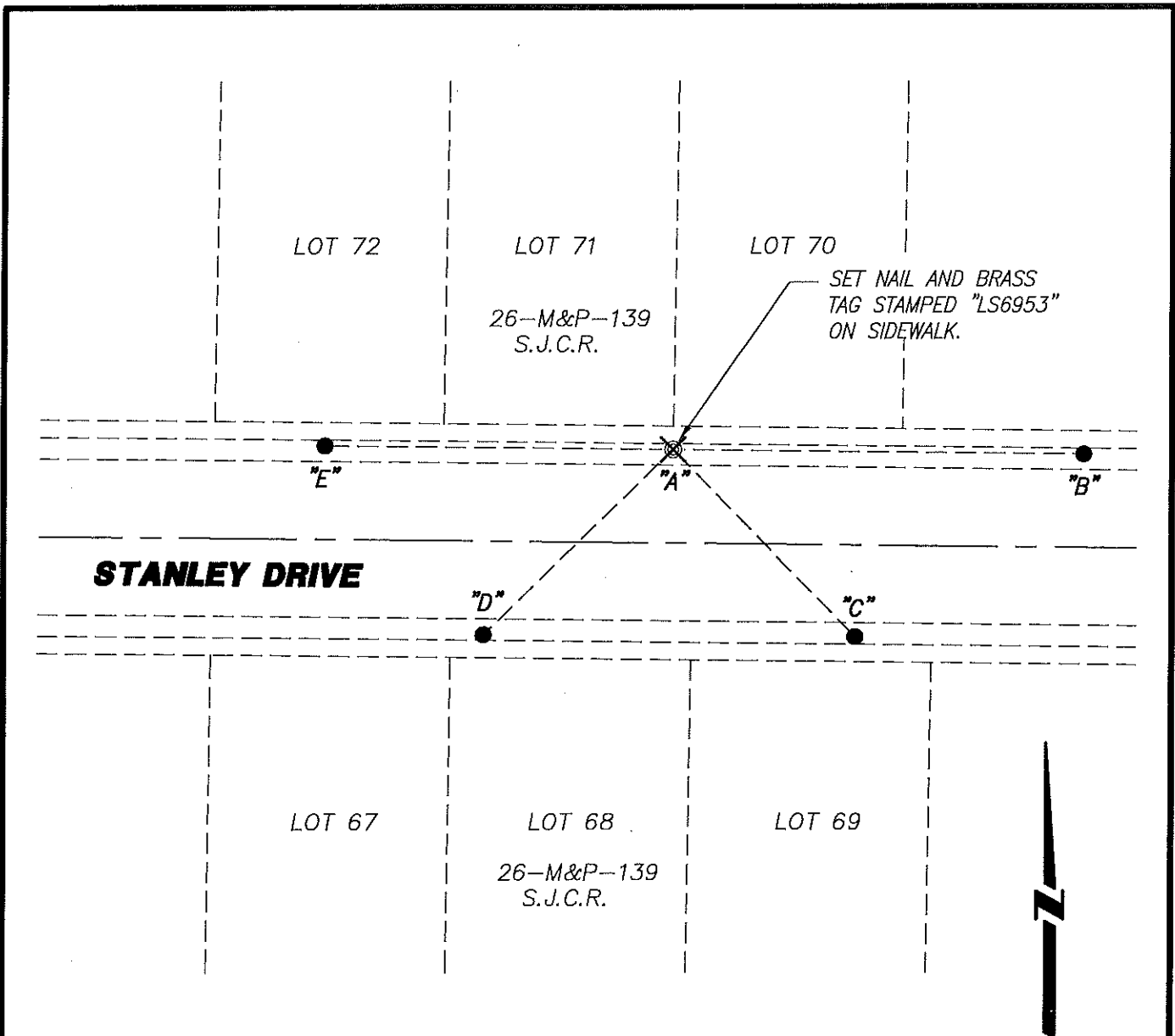
and examined and filed August 1, 2018

Signed James E. Hart P.L.S. or R.C.E. No: 8657

Title Acting County Surveyor



County Surveyor's Comment \_\_\_\_\_



NOT TO SCALE

**REFERENCE:**

(R1) CR-18-65

**LEGEND:**

- ⊗ SET CONCRETE NAIL WITH BRASS TAG  
L.S. 6953.
- FOUND CONCRETE NAIL WITH BRASS TAG  
L.S. 6953 (R1).
- M&P- MAPS & PLATS
- S.J.C.R. SAN JOAQUIN COUNTY RECORDS
- (M) MEASURED DISTANCE. ALL DISTANCES ARE  
MEASURED UNLESS NOTED OTHERWISE.

Bearing and Distance Table		
BS-@-FS	Bearing	FS DISTANCE
B-A-B	00°00'00"	105.530'(M)(R1)
B-A-C	45°00'00"	67.290'(M)(R1)
B-A-D	135°00'00"	68.025'(M)(R1)
B-A-E	180°00'00"	89.380'(M)(R1)

**NOTE:**

THIS CORNER RECORD DOES NOT VERIFY THIS MONUMENT TO BE IN THE CORRECT POSITION.