

CORNER RECORD

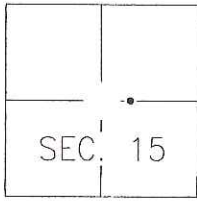
Agency Index CR-18-135

Document Number _____

City of Lodi

County of San Joaquin, California

Brief Legal Description Monuments near the intersection of Sylvan Wy and Mills Ave



CORNER TYPE

- Government Corner Control
- Meander Property
- Rancho Other

Date of Survey 2018-05-21

COORDINATES (Optional)

- N. _____ E. _____
- Elevation _____
- Units Metric U.S. Survey Foot
- Horizontal Datum _____
- Zone _____ Epoch Date _____
- Vertical Datum: _____
- Complies with Public Resources Code §§8801-8819
- Complies with Public Resources Code §§8890-8902

PLS Act Ref.: 8765(d) 8771 8773

Other: _____

Corner/Monument: Left as found Established Rebuilt Pre-Construction
 Found and tagged Reestablished Referenced Post-Construction

Narrative of corner identified and monument as found, set, reset, replaced, or removed:
 See sheet #2 for description(s):

FOUND MONUMENTS NEAR THE INTERSECTION OF SYLVAN WAY AND MILLS AVE. MONUMENTS APPEAR TO BE THE MONUMENTS OF RECORD AS SHOWN ON MAPS & PLATS BOOK 26, PAGE 149 AND PARCEL MAP BOOK 13, PAGE 151. MONUMENTS WERE LOCATED IN RELATION TO EACH OTHER AND TO REFERENCE POINTS SET AS SHOWN ON SHEET 2 PRIOR TO CONSTRUCTION WORK IN THE AREA.

SURVEYOR'S STATEMENT

This Corner Record was prepared by me or under my direction in conformance with the Professional Land Surveyor's Act on JULY 24th, 2018.

Signed [Signature] P.L.S. or R.C.E. No.: 8366



COUNTY SURVEYOR'S STATEMENT

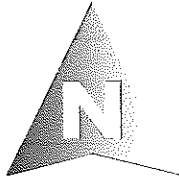
This Corner Record was received July 27, 2018 and examined and filed July 27, 2018.

Signed James E Hart P.L.S. or R.C.E. No.: 8657

Title Acting County Surveyor

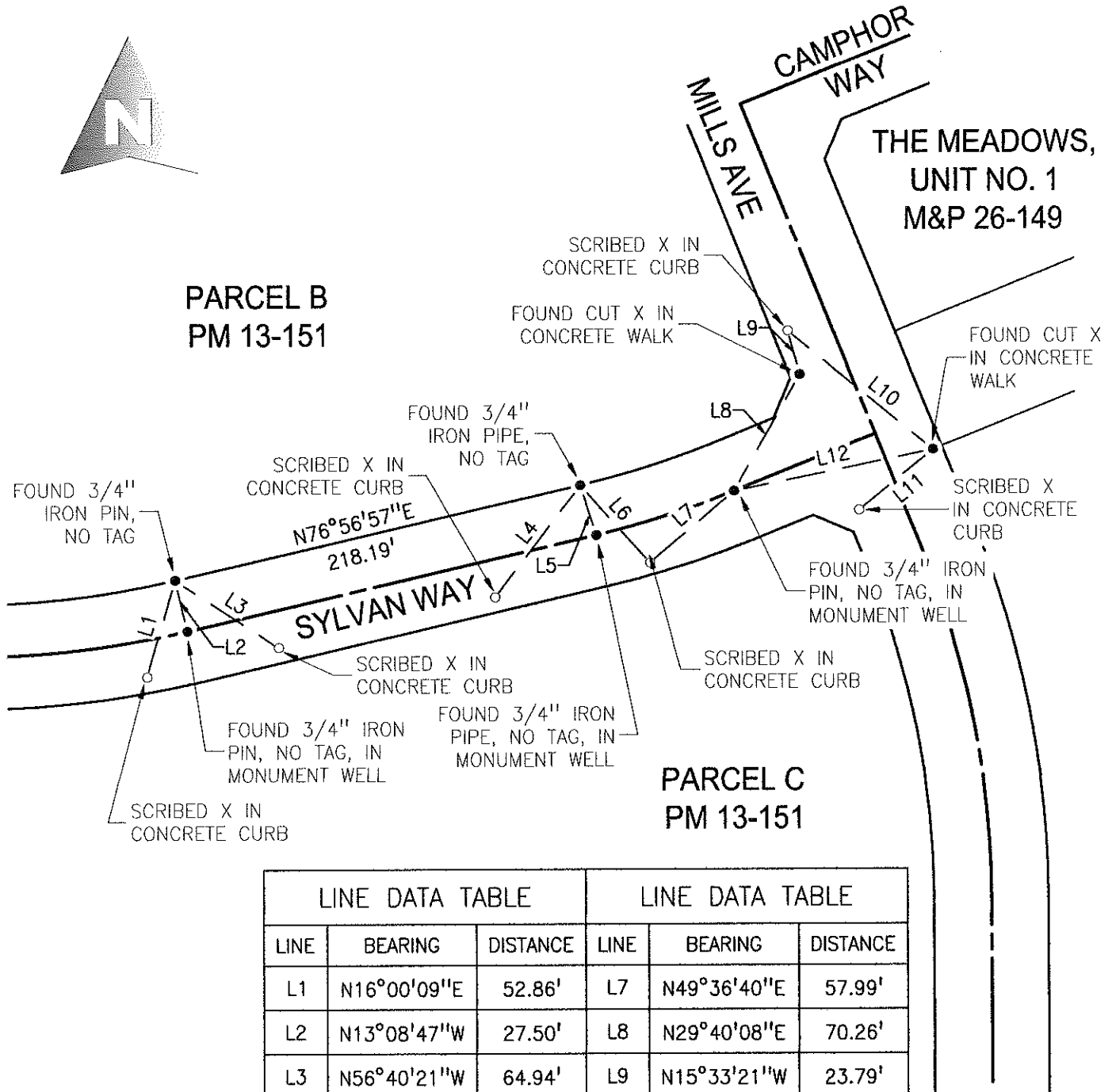
County Surveyor's Comment _____





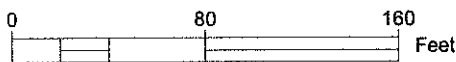
**PARCEL B
PM 13-151**

**THE MEADOWS,
UNIT NO. 1
M&P 26-149**



**PARCEL C
PM 13-151**

LINE DATA TABLE			LINE DATA TABLE		
LINE	BEARING	DISTANCE	LINE	BEARING	DISTANCE
L1	N16°00'09\"E	52.86'	L7	N49°36'40\"E	57.99'
L2	N13°08'47\"W	27.50'	L8	N29°40'08\"E	70.26'
L3	N56°40'21\"W	64.94'	L9	N15°33'21\"W	23.79'
L4	N37°20'49\"E	73.90'	L10	N50°39'07\"W	98.52'
L5	N17°56'32\"W	27.54'	L11	N50°57'00\"E	50.10'
L6	N41°42'15\"W	54.59'	L12	N78°23'04\"E	106.77'



NOTES:

1. THE BEARINGS SHOWN ARE FROM POINT TO POINT AND NOT INTENDED TO REFLECT COURSES SHOWN ON RECORD MAPS.
2. THE FOUND MONUMENTS ARE SHOWN IN THE POSITIONS AS FOUND. NO ATTEMPT WAS MADE TO ESTABLISH THE VALIDITY OF THEIR POSITIONS IN RELATION TO BOUNDARY LINES, RIGHTS-OF-WAY, OR OTHER RECORD POSITIONS.