

CORNER RECORD

Agency Index CR-18-132

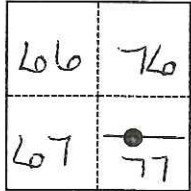
Document Number _____

City of Stockton County of San Joaquin, California

Brief Legal Description Corner at the Intersection of Gillis Rd. & Hwy 4, section 77; C.M. Weber Grant

CORNER TYPE

COORDINATES (Optional)



C.M. Weber Grant

- Government Corner Control
 Meander Property
 Rancho Other

Date of Survey June 13, 2018

N. 2168832.53 E. 6359284.95

Elevation _____

Units Metric U.S. Survey Foot

Horizontal Datum CCS83

Zone 3 Epoch Date 2010

Vertical Datum N/A

Complies with Public Resources Code §§8801-8819

Complies with Public Resources Code §§8890-8902

PLS Act Ref.: 8765(d) 8771 8773 Other:

Corner/Monument: Left as found Established Rebuilt Pre-Construction

Found and tagged Reestablished Referenced Post-Construction

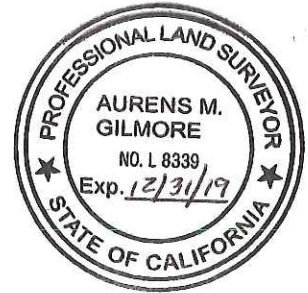
Narrative of corner identified and monument as found, set, reset, replaced, or removed:

See sheet #2 for description(s):

Corner destroyed during construction. Set 2" Iron Pipe with a 2 1/2" brass cap with punch, stamped "California Dept of Transportation, LS 8339". Said monument was set in a 8" diameter concrete cylinder and is now encased in a standard monument well. No attempt was made to determine the validity of monument or its proper location in relation to the legal boundary lines in the area.

SURVEYOR'S STATEMENT

This Corner Record was prepared by me or under my direction in conformance with the Professional Land Surveyors' Act on JUNE 29TH 2018.
 Signed Aurens M. Gilmore P.L.S. or R.C.E. No. 8339

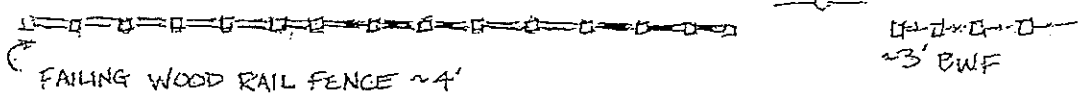
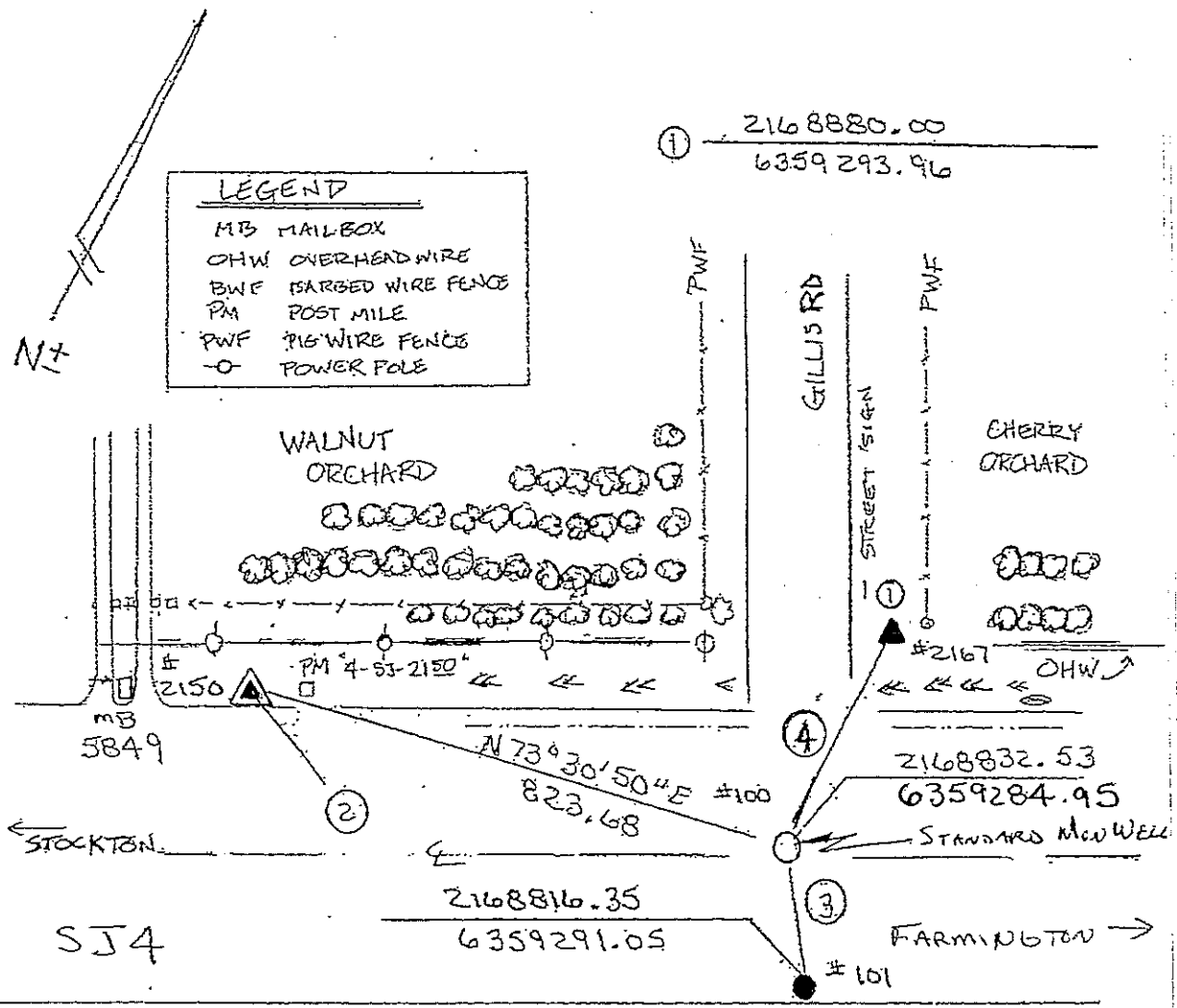


COUNTY SURVEYOR'S STATEMENT

This Corner Record was received July 13, 2018
 and examined and filed July 13, 2018.
 Signed James E. Hart P.L.S. or R.C.E. No. 8657
 Title Acting County Surveyor

County Surveyor's Comment _____





- ② $\frac{2168598.78}{6358495.13}$
- ③ N 20° 38' 45" W 17.29 FT
- ④ S 10° 44' 49" W 48.31 FT
- ① SET 2" IRON PIPE WITH A 2 1/2" BRASS CAP STAMPED CALIFORNIA DEPT. OF TRANSPORTATION, LS 8339"
- FOUND 2 1/2" BRASS CAP IN CONCRETE STAMPED LS 6670
- ▲ FOUND 1" IRON PIPE WITH 1 1/2" CALTRANS ALUM. CAP
- ▲ FOUND 1" IRON PIPE WITH RED CALTRANS PLASTIC PLUG