

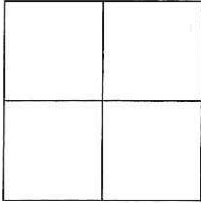
# CORNER RECORD

Agency Index CR-18-131

Document Number \_\_\_\_\_

City of TRACY

County of \_\_\_\_\_

SAN JOAQUIN, CaliforniaBrief Legal Description CORRAL HOLLOW ROAD - 29 RS 138**CORNER TYPE****COORDINATES (Optional)**Government Corner  Control Meander  Property Rancho  Other Date of Survey APRIL 25, 2018

N. \_\_\_\_\_ E. \_\_\_\_\_

Elevation \_\_\_\_\_

Units  Metric  U.S. Survey Foot 

Horizontal Datum \_\_\_\_\_

Zone \_\_\_\_\_ Epoch Date \_\_\_\_\_

Vertical Datum \_\_\_\_\_

 Complies with Public Resources Code §§ 8801-8819 Complies with Public Resources Code §§ 8890-8902**PLS Act Ref.:** 8765(d) 8771 8773 Other:**Corner/  
Monument:** Left as found Established Rebuilt Pre-Construction Found and tagged Reestablished Referenced Post-Construction

Narrative of corner identified and monument as found, set, reset, replaced, or removed:

 See sheet #2 for description(s):

PRE-CONSTRUCTION DOCUMENTATION OF THE FOUND 3/4" IRON PIPE ON THE EAST LINE OF CORRAL HOLLOW ROAD AT A WESTERN CORNER OF PARCEL II OF INSTRUMENT NO. 82012429 PER 29 RS 138 WITHIN SECTION 17, T. 3 S. R 5 E. M.D.M.

**SURVEYOR'S STATEMENT**

This Corner Record was prepared by me or under my direction in conformance with

the Professional Land Surveyors' Act on APRIL 25, 2018

Signed \_\_\_\_\_

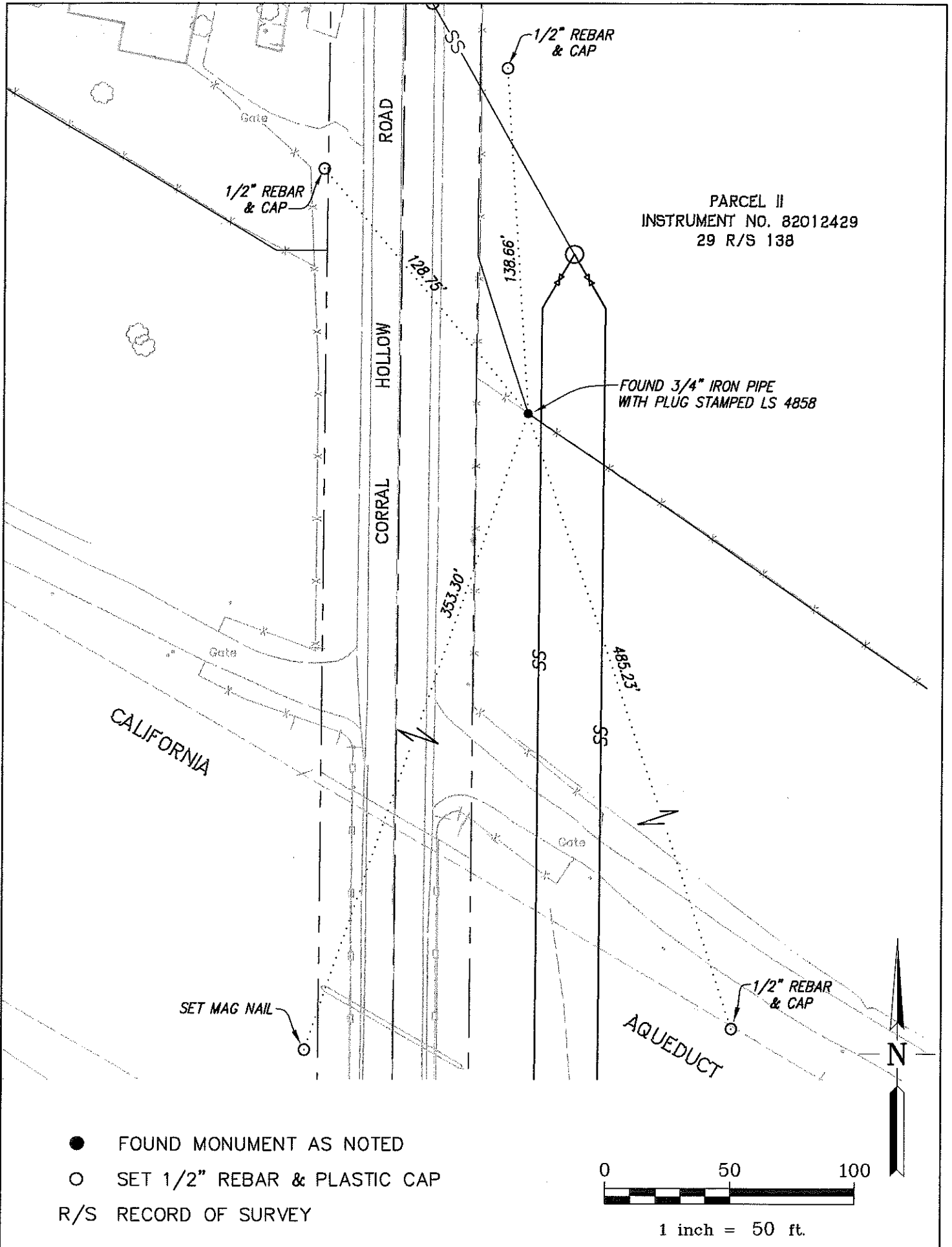
P.L.S. No. \_\_\_\_\_

6441**COUNTY SURVEYOR'S STATEMENT**This Corner Record was received JUNE 25, 2018and examined and filed JUNE 25, 2018

Signed \_\_\_\_\_

P.L.S. No. \_\_\_\_\_

8657Title Acting COUNTY SURVEYOR**County Surveyor's Comment**



PARCEL II  
 INSTRUMENT NO. 82012429  
 29 R/S 138

- FOUND MONUMENT AS NOTED
  - SET 1/2" REBAR & PLASTIC CAP
- R/S RECORD OF SURVEY