

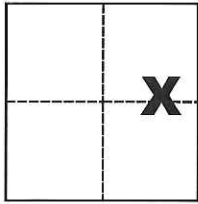
# CORNER RECORD

Agency Index CR-18-116

Document Number \_\_\_\_\_

City of \_\_\_\_\_ County of San Joaquin, California

Brief Legal Description The 40.02 Ac. Net Parcel as shown on R.S. 31-38



### CORNER TYPE

- Government Corner  Control
- Meander  Property
- Rancho  Other

### COORDINATES (Optional)

- N. \_\_\_\_\_ E. \_\_\_\_\_
- Elevation \_\_\_\_\_
- Units Metric  U.S. Survey Foot
- Horizontal Datum \_\_\_\_\_
- Zone \_\_\_\_\_ Epoch Date \_\_\_\_\_
- Vertical Datum \_\_\_\_\_

Sec. 6 & 7, T.1S., R.6E.,  
M.D.B. & M.

- Complies with Public Resources Code §§8801-8819
- Complies with Public Resources Code §§8890-8902

- PLS Act Ref.:  8765(d)  8771  8773  Other:
- Corner/Monument:  Left as found  Established  Rebuilt  Pre-Construction
- Found and tagged  Reestablished  Referenced  Post-Construction

Narrative of corner identified and monument as found, set, reset, replaced, or removed:

See sheet #2 for description(s):

### SURVEYOR'S STATEMENT

This Corner Record was prepared by me or under my direction in conformance with

the Professional Land Surveyors' Act on June 6, 2018

Signed Michael L. Quarantali P.L.S. or R.C.E. No. L.S. 4450



### COUNTY SURVEYOR'S STATEMENT

This Corner Record was received June 25, 2018

and examined and filed June 25, 2018

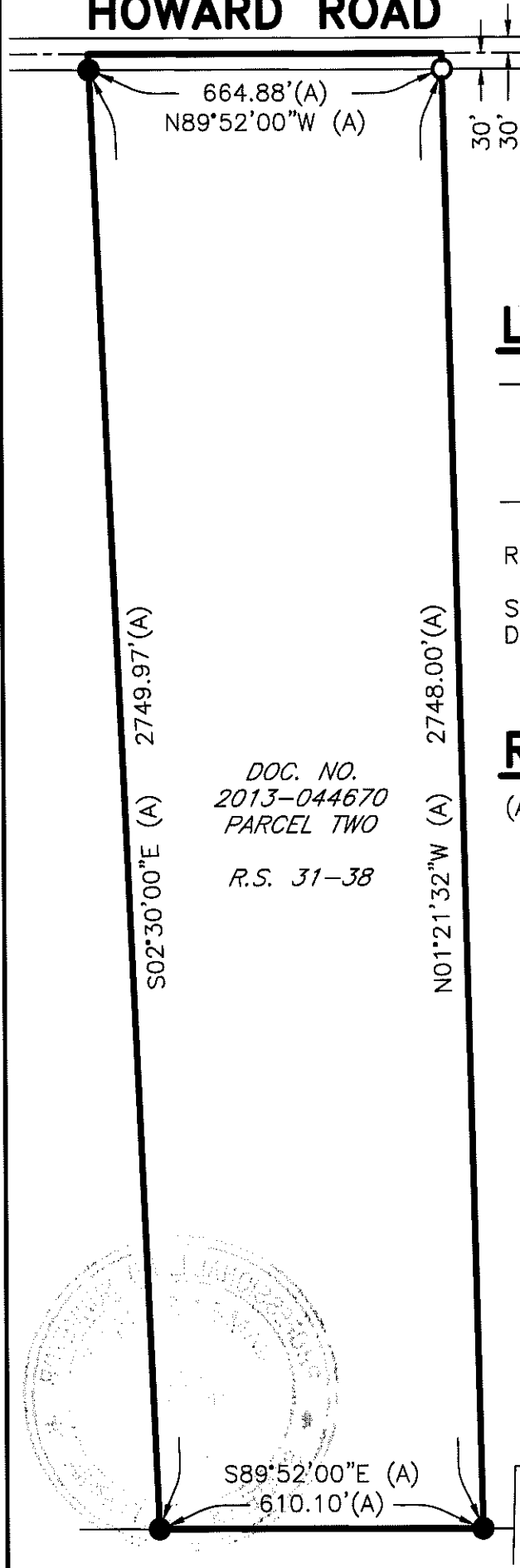
Signed James E. Hart P.L.S. or R.C.E. No. 8657

Title Acting County Surveyor

County Surveyor's Comment \_\_\_\_\_



# HOWARD ROAD

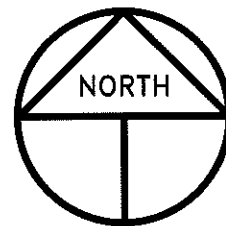


## LEGEND

- INDICATES FOUND 3/4" IRON PIPE PER (A), BENT, REPLACED WITH 3/4"  $\phi$  X 30" IRON PIPE W/TAG AND PLASTIC CAP STAMPED LS 4450
- INDICATES FOUND 3/4" IRON PIPE PER (A), NOT TAGGED
- R.S. INDICATES RECORD OF SURVEY, BOOK AND PAGE, S.J.C.R.
- S.J.C.R. INDICATES SAN JOAQUIN COUNTY RECORDS DOC. NO. INDICATES DOCUMENT NUMBER, S.J.C.R.

## REFERENCE

(A) R.S. 31-38, S.J.C.R.



SCALE: 1" = 300'  
2018-100