

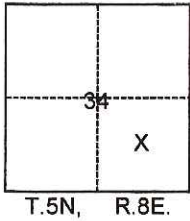
CORNER RECORD

Agency Index CR-18-115
 Document Number _____

City of _____ County of SAN JOAQUIN, California
 Brief Legal Description _____ A.P.N. 009-110-17

CORNER TYPE

COORDINATES (Optional)



- Government Corner Control
 Meander Property
 Rancho Other

Date of Survey April 18, 2018

N. _____ E. _____
 Elevation _____
 Units Metric U.S. Survey Foot
 Horizontal Datum _____
 Zone _____ Epoch Date _____
 Vertical Datum _____
 Complies with Public Resources Code §§8801-8819
 Complies with Public Resources Code §§8890-8902

- PLS Act Ref.: 8765(d) 8771 8773 Other:
 Corner/Monument: Left as found Established Rebuilt Pre-Construction
 Found and tagged Reestablished Referenced Post-Construction

Narrative of corner identified and monument as found, set, reset, replaced, or removed:
 See sheet #2 for description(s):

SURVEYOR'S STATEMENT

This Corner Record was prepared by me or under my direction in conformance with
 the Professional Land Surveyors' Act on June 5, 2018

Signed Joe Murphy P.L.S. or R.C.E. No. 7269



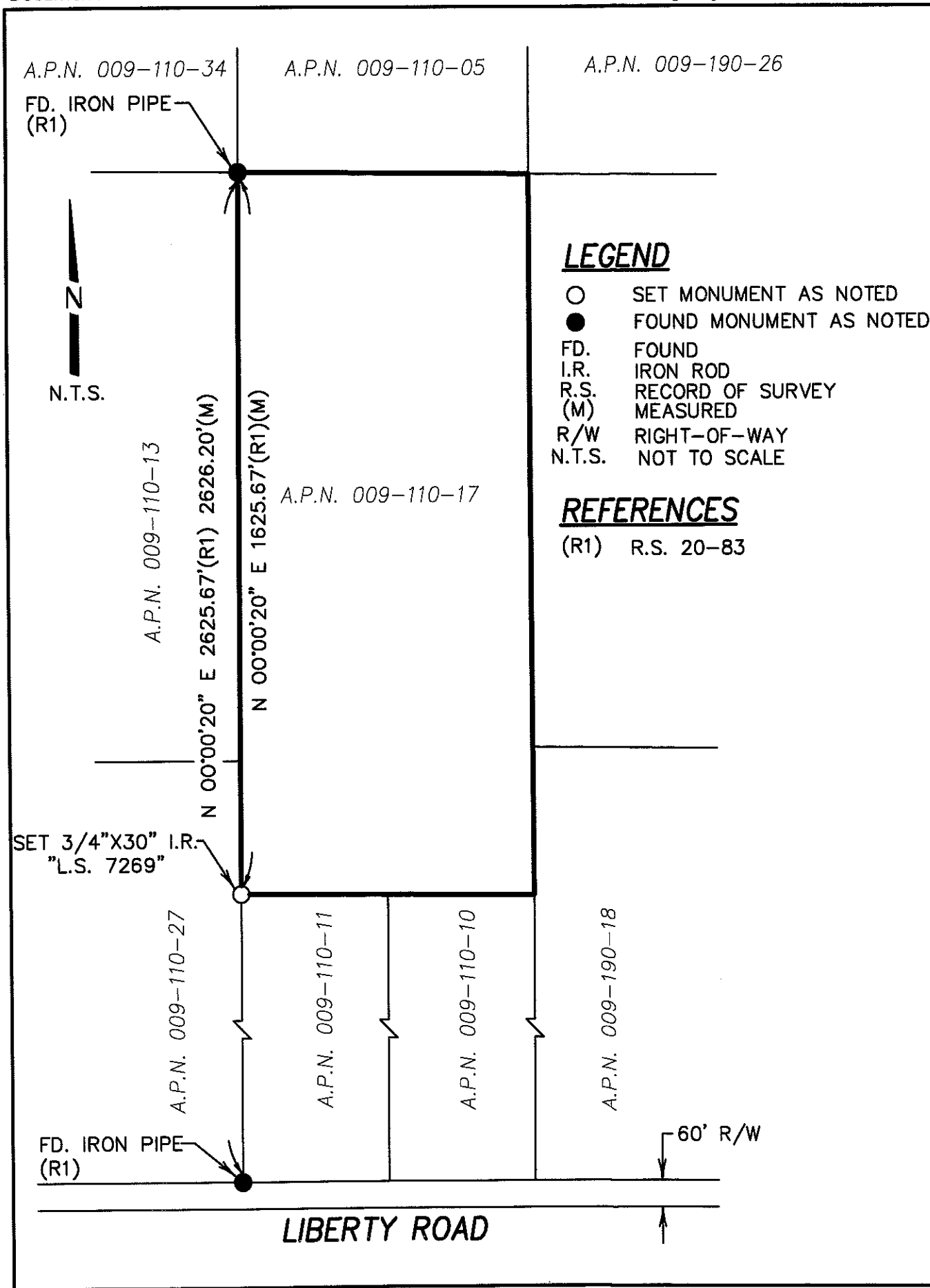
COUNTY SURVEYOR'S STATEMENT

This Corner Record was received June 25, 2018
 and examined and filed June 25, 2018

Signed James E. Hart P.L.S. or R.C.E. No. 8657
 Title Acting County Surveyor

County Surveyor's Comment _____





LEGEND

- SET MONUMENT AS NOTED
- FOUND MONUMENT AS NOTED
- FD. FOUND
- I.R. IRON ROD
- R.S. RECORD OF SURVEY
- (M) MEASURED
- R/W RIGHT-OF-WAY
- N.T.S. NOT TO SCALE

REFERENCES

(R1) R.S. 20-83