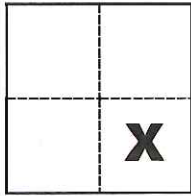


CORNER RECORD

Agency Index CR-18-105
Document Number _____

City of Lathrop County of San Joaquin, California
Brief Legal Description NW and NE Cor. of Parcel "1" Per P.M. 24-101



CORNER TYPE

Government Corner Control
Meander Property
Rancho Other

Date of Survey March 28, 2018

COORDINATES (Optional)

N. _____ E. _____
Elevation _____
Units Metric U.S. Survey Foot
Horizontal Datum _____
Zone _____ Epoch Date _____
Vertical Datum _____

Sec. 26, T. 1S., R. 6E.,
M.D.B. & M.

Complies with Public Resources Code §§8801-8819
 Complies with Public Resources Code §§8890-8902

PLS Act Ref.: 8765(d) 8771 8773 Other:
Corner/Monument: Left as found Established Rebuilt Pre-Construction
 Found and tagged Reestablished Referenced Post-Construction

Narrative of corner identified and monument as found, set, reset, replaced, or removed:

See sheet #2 for description(s):

SURVEYOR'S STATEMENT

This Corner Record was prepared by me or under my direction in conformance with
the Professional Land Surveyors' Act on April 26, 2018

Signed Michael L. Quarantoli P.L.S. or R.C.E. No. L.S. 4450



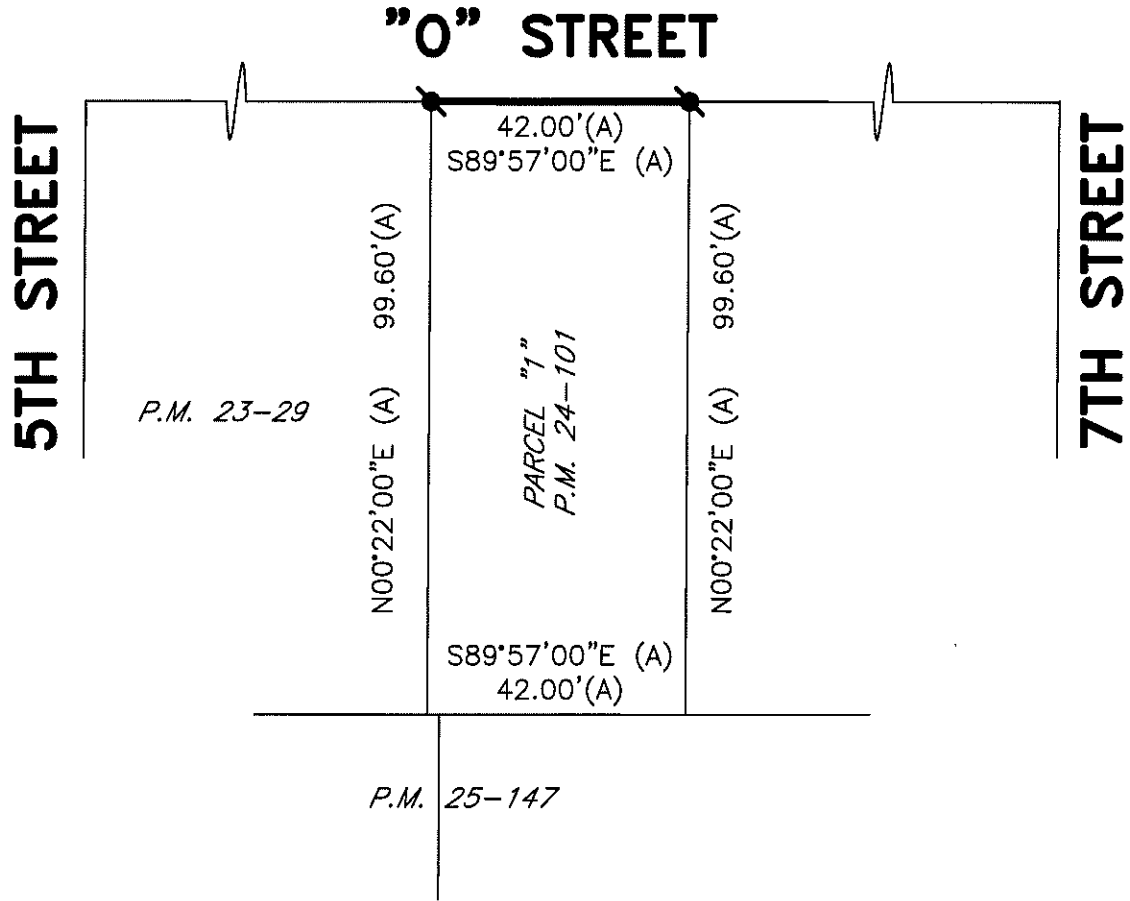
COUNTY SURVEYOR'S STATEMENT

This Corner Record was received May 9, 2018
and examined and filed May 9, 2018

Signed James E. Hart P.L.S. or R.C.E. No. 8657
Title Acting County Surveyor

County Surveyor's Comment



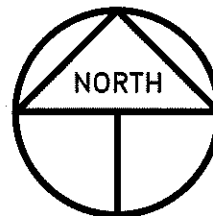


LEGEND

- INDICATES FOUND 3/4" IRON PIPE TAGGED L.S. 4450 PER (A)
- P.M. INDICATES PARCEL MAP, BOOK AND PAGE, S.J.C.R.
- S.J.C.R. INDICATES SAN JOAQUIN COUNTY RECORDS

REFERENCE

(A) P.M. 24-101, S.J.C.R.



SCALE: 1" = 30'
2018-85

