

CORNER RECORD

Agency Index CR-18-102
Document Number _____

City of Escalon County of San Joaquin, California
Brief Legal Description Near Section corner S31 & S32 T1S R9E and S6 & S5 T2S R9E

CORNER TYPE

COORDINATES (Optional)

S31 T1S	S32 R9E
S6 T2S	S5 R9E

- Government Corner Control
 Meander Property
 Rancho Other

N. _____ E. _____
Elevation _____
Units Metric U.S. Survey Foot
Horizontal Datum _____
Zone _____ Epoch Date _____
Vertical Datum _____
 Complies with Public Resources Code §§8801-8819
 Complies with Public Resources Code §§8890-8902

Date of Survey January 19, 2018

- PLS Act Ref.: 8765(d) 8771 8773 Other:
Corner/Monument: Left as found Established Rebuilt Pre-Construction
 Found and tagged Reestablished Referenced Post-Construction

Narrative of corner identified and monument as found, set, reset, replaced, or removed:

See sheet #2 for description(s):

References were set and tied and the monument well was raised to the new surface of the road.

SURVEYOR'S STATEMENT

This Corner Record was prepared by me or under my direction in conformance with
the Professional Land Surveyors' Act on April 15, 2018
Signed [Signature] P.L.S. or R.C.E. No. 6406

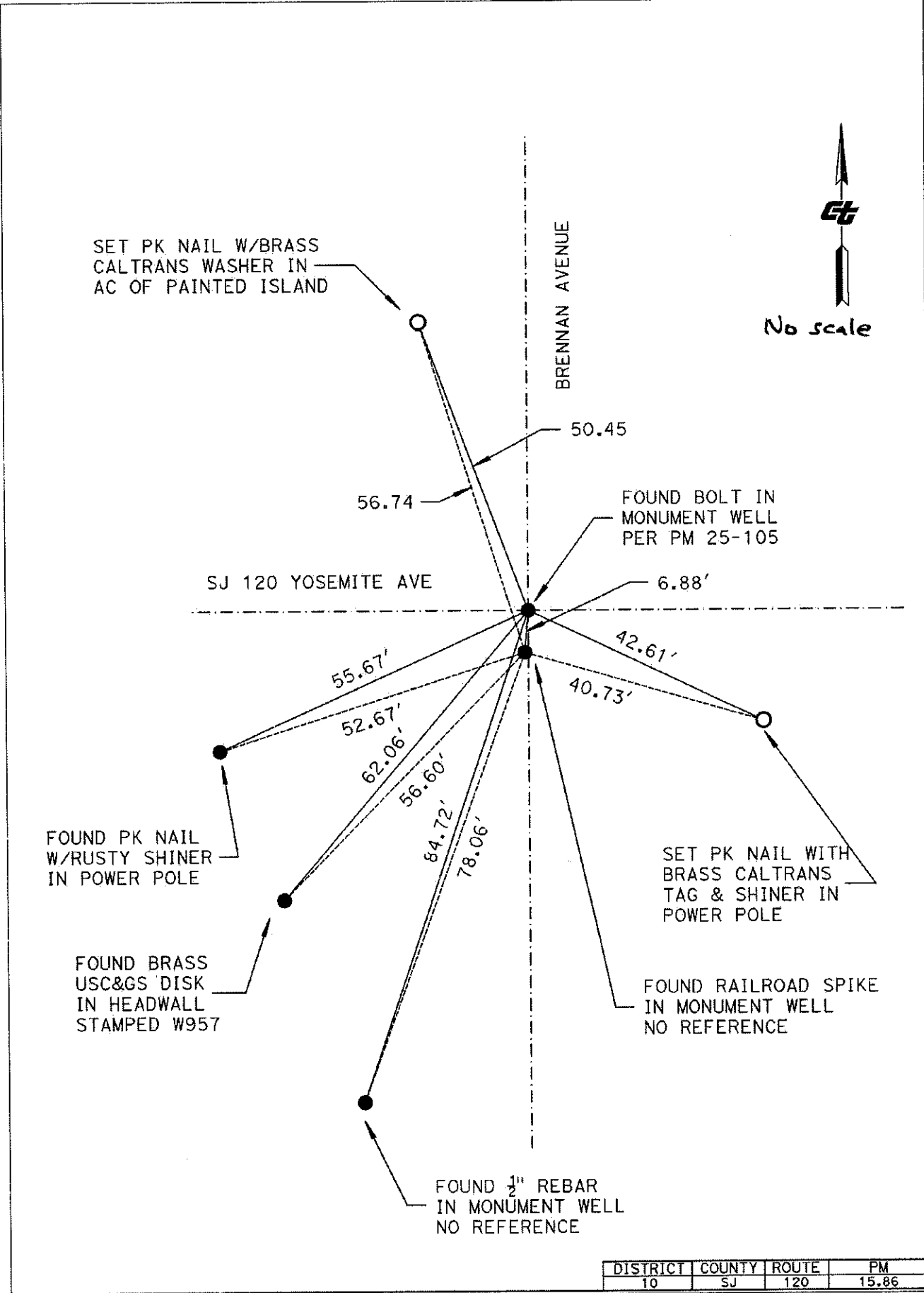


COUNTY SURVEYOR'S STATEMENT

This Corner Record was received May 8, 2018
and examined and filed May 8, 2018
Signed James E. Hart P.L.S. or R.C.E. No. 8657
Title Acting County Surveyor
County Surveyor's Comment _____



D.P. Sheet No. 62



DISTRICT	COUNTY	ROUTE	PM
10	SJ	120	15.86