

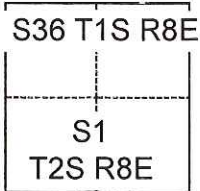
CORNER RECORD

Agency Index CR-18-100
Document Number _____

City of _____ County of San Joaquin, California
Brief Legal Description Near W 1/16 cor Sec 36 T.1 S., R. 8 E. & Sec 1 T.2 S., R.8 E. M.D.M.

CORNER TYPE

COORDINATES (Optional)



- Government Corner Control
 Meander Property
 Rancho Other

N. _____ E. _____

Elevation _____

Units Metric U.S. Survey Foot

Horizontal Datum _____

Zone _____ Epoch Date _____

Vertical Datum _____

Complies with Public Resources Code §§8801-8819

Complies with Public Resources Code §§8890-8902

Date of Survey January 19, 2018

PLS Act Ref.: 8765(d) 8771 8773 Other:

Corner/Monument: Left as found Established Rebuilt Pre-Construction
 Found and tagged Reestablished Referenced Post-Construction

Narrative of corner identified and monument as found, set, reset, replaced, or removed:

See sheet #2 for description(s):

Found harrow tooth per RS 9-30 in monument well.

SURVEYOR'S STATEMENT

This Corner Record was prepared by me or under my direction in conformance with
the Professional Land Surveyors' Act on April 15, 2018

Signed [Signature] P.L.S. or R.C.E. No. 6406



COUNTY SURVEYOR'S STATEMENT

This Corner Record was received May 8, 2018

and examined and filed May 8, 2018

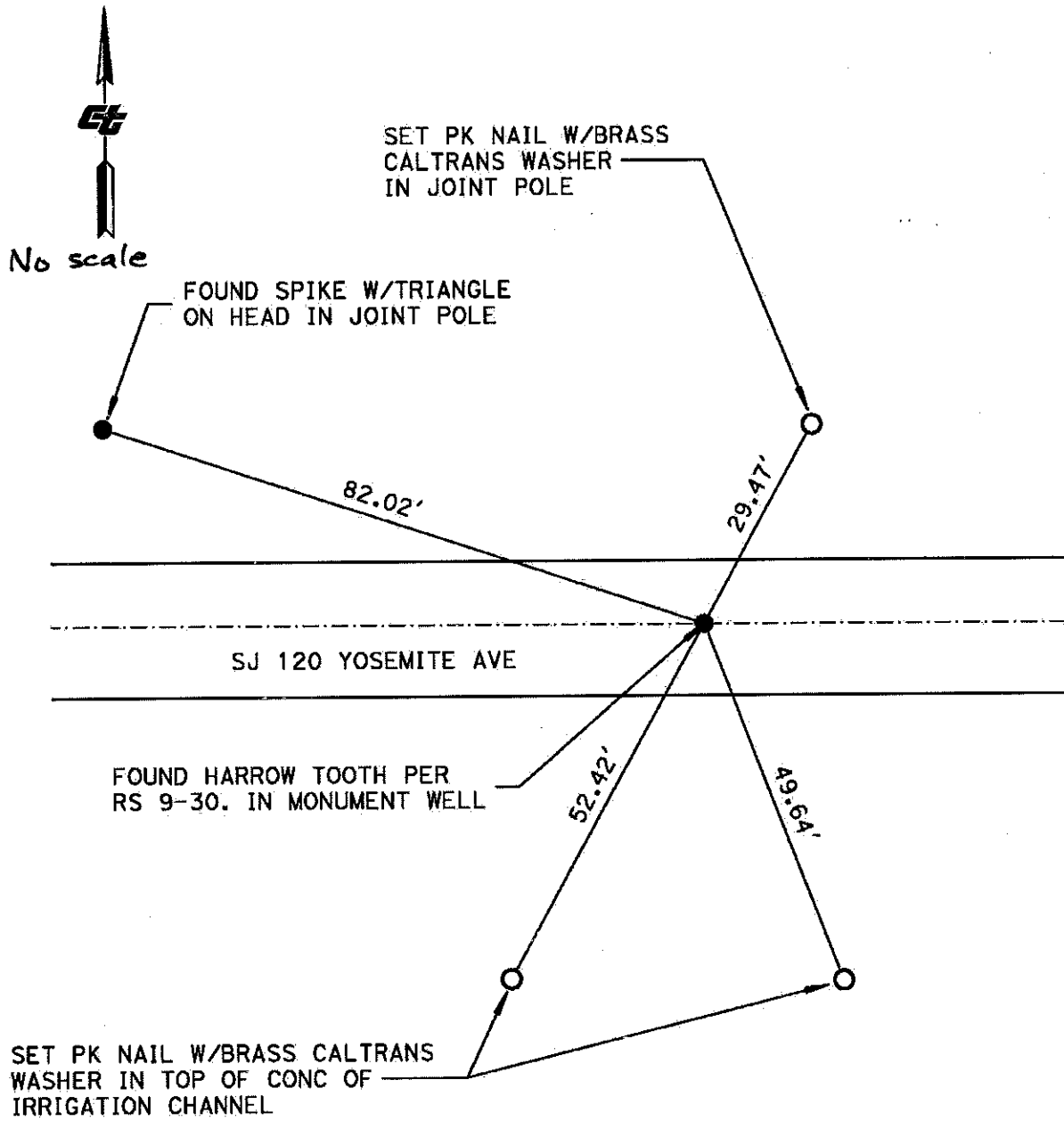
Signed James E. Hart P.L.S. or R.C.E. No. 8657

Title Acting County Surveyor

County Surveyor's Comment



D.D. Sheet No. 59



DISTRICT	COUNTY	ROUTE	PM
10	SJ	120	8.09