

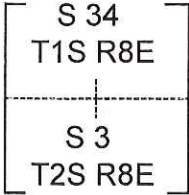
# CORNER RECORD

Agency Index CR-18-97  
Document Number \_\_\_\_\_

City of \_\_\_\_\_ County of San Joaquin, California  
Brief Legal Description Near 1/4 cor Sec 34 T.1 S., R.8 E. & Sec 3 T.2 S., R.8 E. M.D.M.

### CORNER TYPE

### COORDINATES (Optional)



- Government Corner     Control  
 Meander                       Property  
 Rancho                             Other

N. \_\_\_\_\_ E. \_\_\_\_\_

Elevation \_\_\_\_\_

Units     Metric                       U.S. Survey Foot

Horizontal Datum \_\_\_\_\_

Zone \_\_\_\_\_ Epoch Date \_\_\_\_\_

Vertical Datum \_\_\_\_\_

Complies with Public Resources Code §§8801-8819

Complies with Public Resources Code §§8890-8902

PLS Act Ref.:     8765(d)                       8771                       8773                       Other:

Corner/  
 Monument:     Left as found                       Established                       Rebuilt                       Pre-Construction  
                      Found and tagged                       Reestablished                       Referenced                       Post-Construction

Narrative of corner identified and monument as found, set, reset, replaced, or removed:

See sheet #2 for description(s).

Found railroad spike per RS 10-23 in monument well.

### SURVEYOR'S STATEMENT

This Corner Record was prepared by me or under my direction in conformance with  
the Professional Land Surveyors' Act on April 15, 2018

Signed [Signature] P.L.S. or R.C.E. No. 6406



### COUNTY SURVEYOR'S STATEMENT

This Corner Record was received May 8, 2018

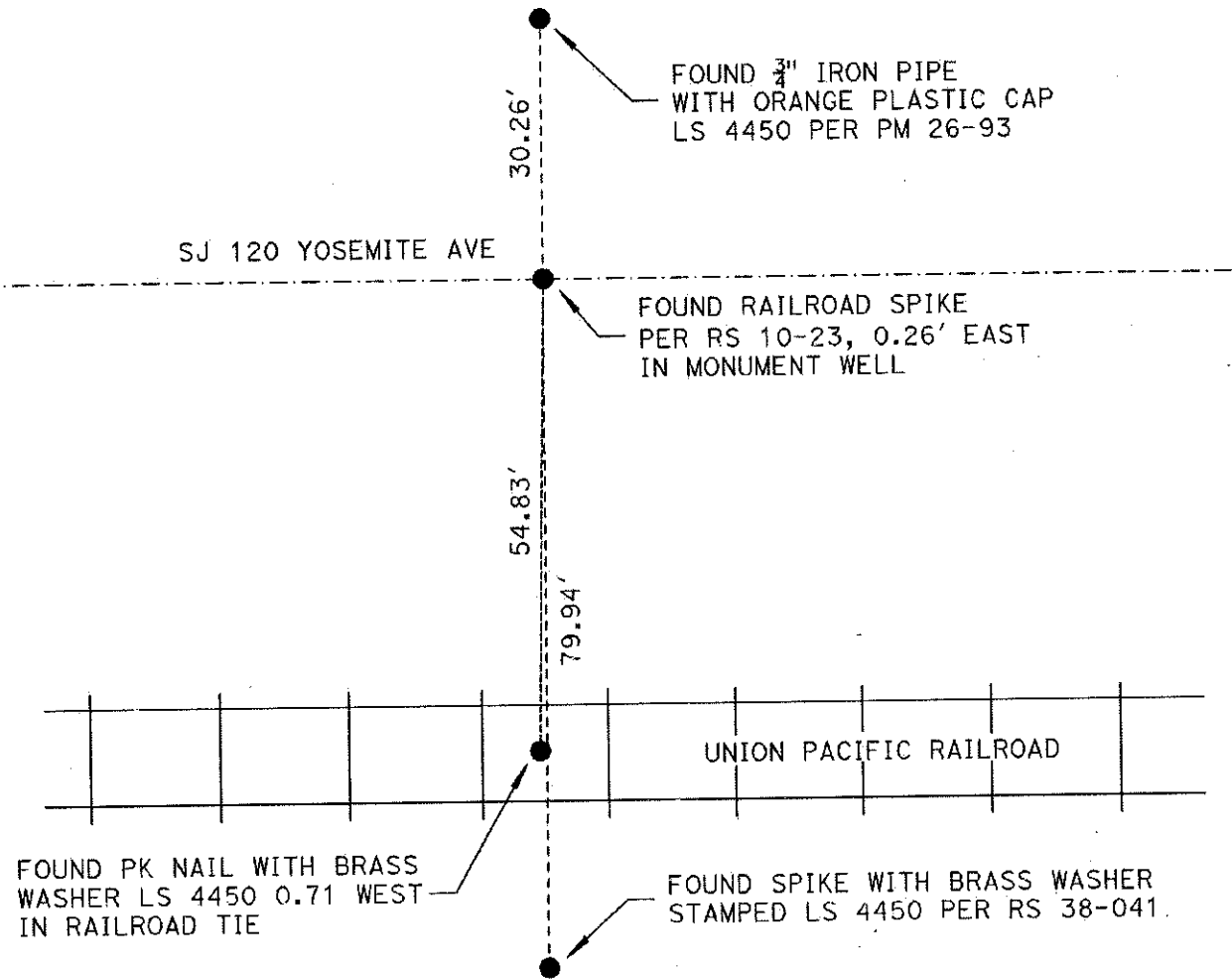
and examined and filed May 8, 2018

Signed James E. Hart P.L.S. or R.C.E. No. 8657

Title Acting County Surveyor

County Surveyor's Comment





NTS

DISTRICT	COUNTY	ROUTE	PM
10	SJ	120	12.33