

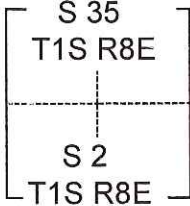
CORNER RECORD

Agency Index CR-18-95
Document Number _____

City of _____ County of San Joaquin, California
Brief Legal Description Near 1/4 cor Sec 35 T.1 S. R. 8 E. & Sec 2 T.2 S. R.8 E. M.D.M.

CORNER TYPE

COORDINATES (Optional)



- Government Corner Control
 Meander Property
 Rancho Other

Date of Survey January 19, 2018

N. _____ E. _____
 Elevation _____
 Units Metric U.S. Survey Foot
 Horizontal Datum _____
 Zone _____ Epoch Date _____
 Vertical Datum _____
 Complies with Public Resources Code §§8801-8819
 Complies with Public Resources Code §§8890-8902

PLS Act Ref.: 8765(d) 8771 8773 Other:
 Corner/Monument: Left as found Established Rebuilt Pre-Construction
 Found and tagged Reestablished Referenced Post-Construction

Narrative of corner identified and monument as found, set, reset, replaced, or removed:
 See sheet #2 for description(s):

Found 1" iron pipe per PM 6-19, in monument well.

SURVEYOR'S STATEMENT

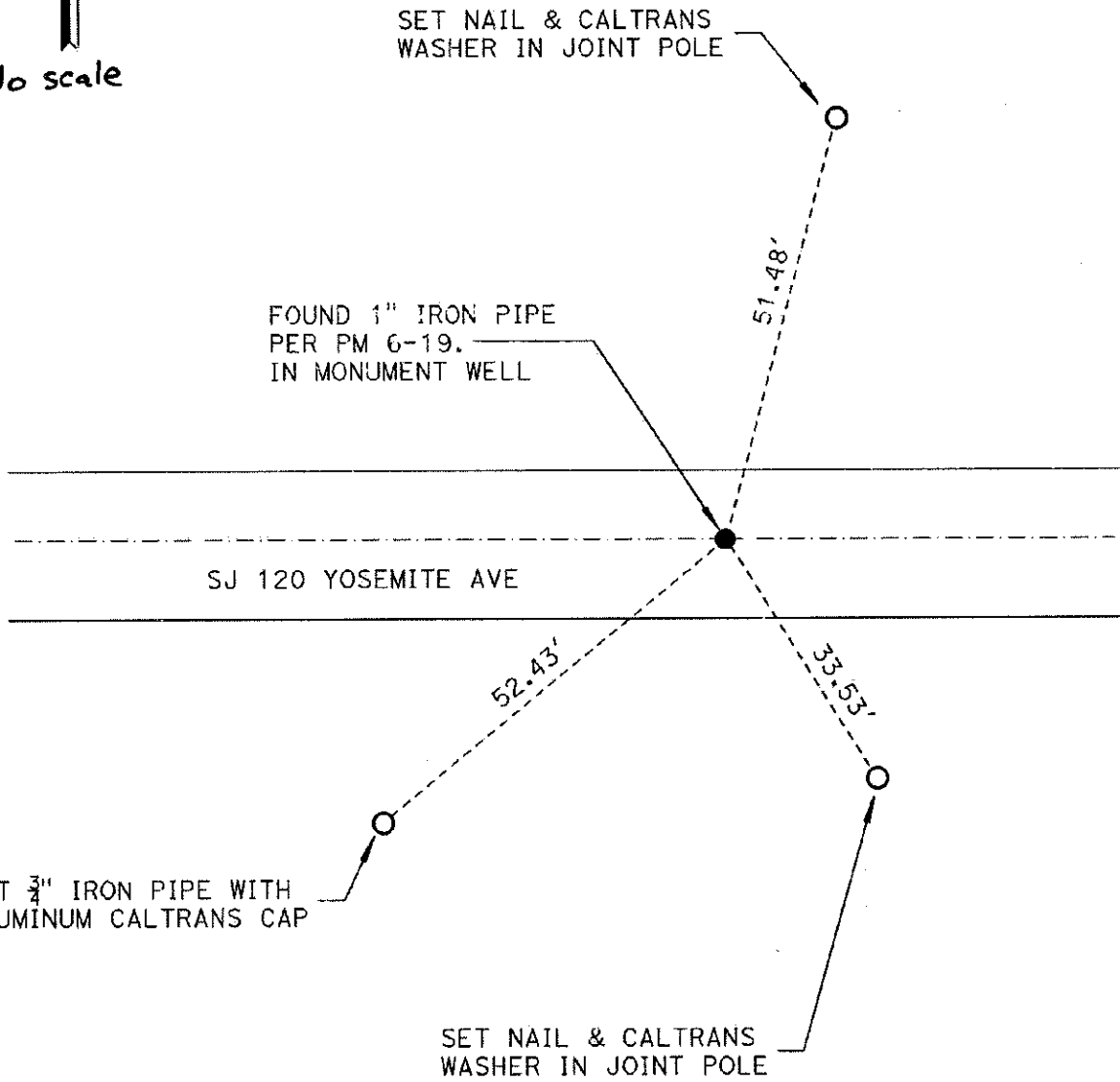
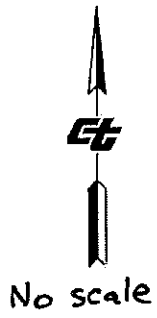
This Corner Record was prepared by me or under my direction in conformance with
 the Professional Land Surveyors' Act on April 15, 2018
 Signed [Signature] P.L.S. or R.C.E. No. 6406



COUNTY SURVEYOR'S STATEMENT

This Corner Record was received May 8, 2018
 and examined and filed May 8, 2018
 Signed James E. Hart P.L.S. or R.C.E. No. 8657
 Title Acting County Surveyor
 County Surveyor's Comment _____





DISTRICT	COUNTY	ROUTE	PM
10	SJ	120	13.32