

CORNER RECORD

Agency Index CR-18-89

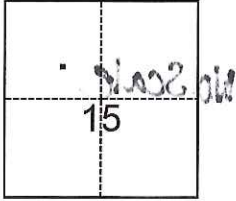
Document Number _____

City of STOCKTON County of SAN JOAQUIN, California

Brief Legal Description STREET MONUMENT AT THE CULDESAC OF JILL CIRCLE, M&P 21-38

CORNER TYPE

COORDINATES (Optional)



T2N, R6E, MDM

- Government Corner Control
 Meander Property
 Rancho Other

Date of Survey December 29, 2017

N. _____ E. _____

Elevation _____

Units Metric U.S. Survey Foot

Horizontal Datum _____

Zone _____ Epoch Date _____

Vertical Datum _____

Complies with Public Resources Code §§8801-8819

Complies with Public Resources Code §§8890-8902

PLS Act Ref.: 8765(d) 8771 8773 Other:

Corner/ Monument: Left as found Established Rebuilt Pre-Construction

Found and tagged Reestablished Referenced Post-Construction

Narrative of corner identified and monument as found, set, reset, replaced, or removed:

See sheet #2 for description(s):

STREET MONUMENT AT THE CULDESAC OF JILL CIRCLE, PER THE ESTATES #5, M&P 21-38.
SEE SKETCH ON PAGE 2.

SURVEYOR'S STATEMENT

This Corner Record was prepared by me or under my direction in conformance with the Professional Land Surveyors' Act on March 15th, 2018
Signed [Signature] P.L.S. or R.C.E. No. 8971



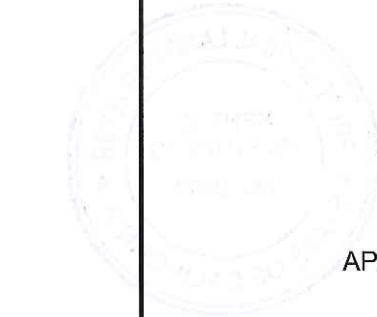
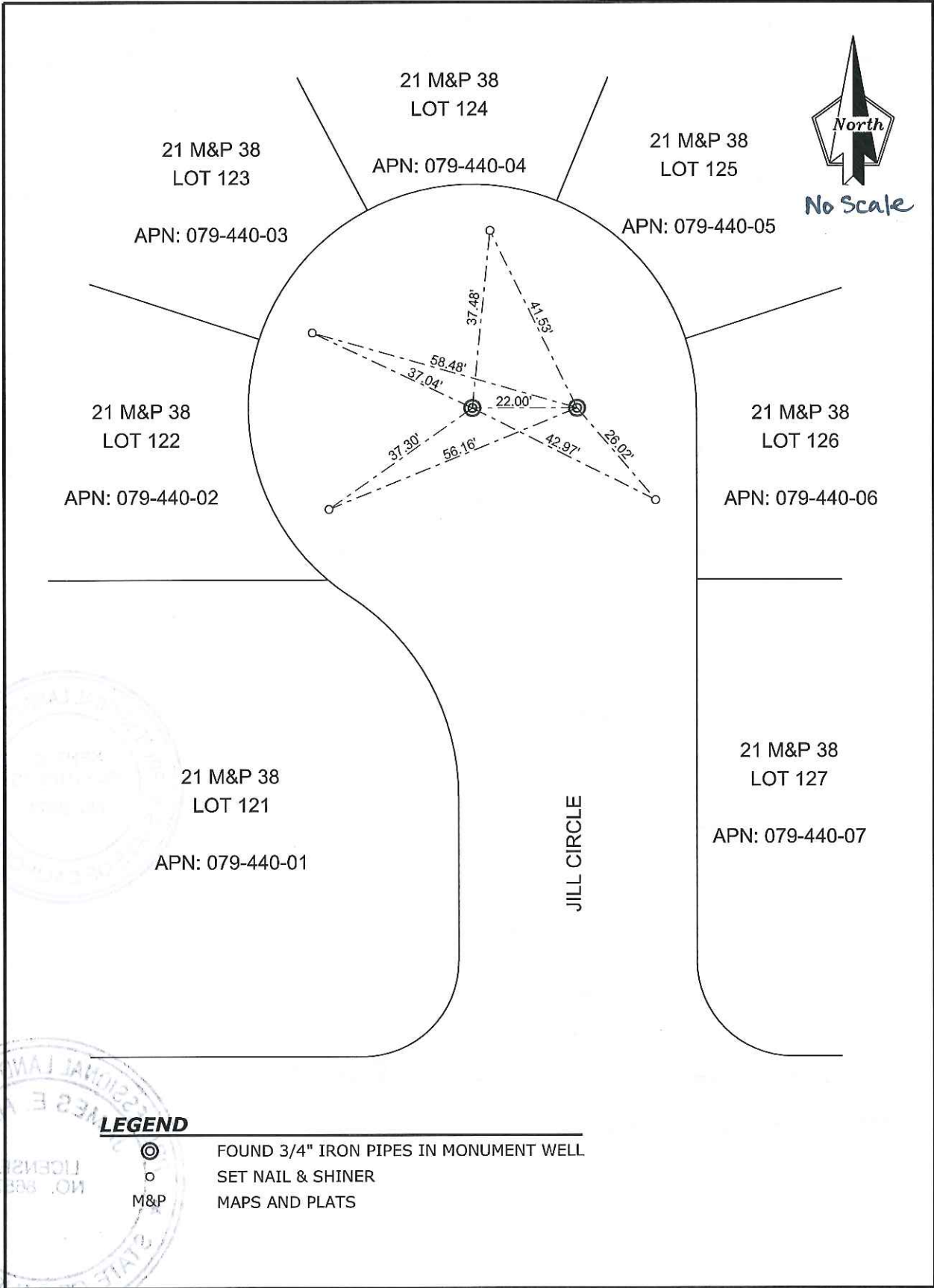
COUNTY SURVEYOR'S STATEMENT

This Corner Record was received April 16, 2018
and examined and filed April 16, 2018
Signed James E. Hart P.L.S. or R.C.E. No. 8657
Title Acting County Surveyor

County Surveyor's Comment _____



198-21-23



LEGEND

- ⊙ FOUND 3/4" IRON PIPES IN MONUMENT WELL
- ⊙ SET NAIL & SHINER
- ⊙ M&P MAPS AND PLATS