

CORNER RECORD

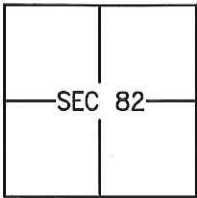
Agency Index CR-18-84

Document Number _____

City of _____

County of SAN JOAQUIN, California

Brief Legal Description MONUMENT 1900± SOUTHWEST OF ALPINE ROAD ALONG CENTER OF ROUTE 88



WEBER GRANT

CORNER TYPE

- | | | | |
|-------------------|--------------------------|----------|-------------------------------------|
| Government Corner | <input type="checkbox"/> | Control | <input type="checkbox"/> |
| Meander | <input type="checkbox"/> | Property | <input type="checkbox"/> |
| Rancho | <input type="checkbox"/> | Other | <input checked="" type="checkbox"/> |

Date of Survey 2018-02-28

COORDINATES (Optional)

N. _____ E. _____

Elevation _____

Units Metric U.S. Survey Foot

Horizontal Datum _____

Zone _____ Epoch Date _____

Vertical Datum: _____

Complies with Public Resources Code §§8801-8819

Complies with Public Resources Code §§8890-8902

PLS Act Ref.: 8765(d) 8771 8773

Other: _____

Corner/Monument: Left as found Established Rebuilt Pre-Construction
 Found and tagged Reestablished Referenced Post-Construction

Narrative of corner identified and monument as found and set or reset:

See sheet #2 for description(s):

SET NEW MONUMENT IN WELL IN POSITION AS SHOWN ON THE SAN JOAQUIN COUNTY CORNER RECORD DOCUMENT NO. 06-18. THE POSITION OF THE MONUMENT SET WAS ESTABLISHED SOLELY BY USING THE SWING TIES ON THE REFERENCED CORNER RECORD. NO ATTEMPT WAS MADE TO DETERMINE THE VALIDITY OF THE MONUMENT OR ITS PROPER LOCATION IN RELATION TO LEGAL BOUNDARY LINES IN THE AREA.

SURVEYOR'S STATEMENT

This Corner Record was prepared by me or under my direction in conformance with

the Land Surveyor's Act on 13 MARCH, 2018.

Signed [Signature] P.L.S. or R.C.E. No.: 8040



COUNTY SURVEYOR'S STATEMENT

This Corner Record was received March 21, 2018 and examined

and filed March 29, 2018.

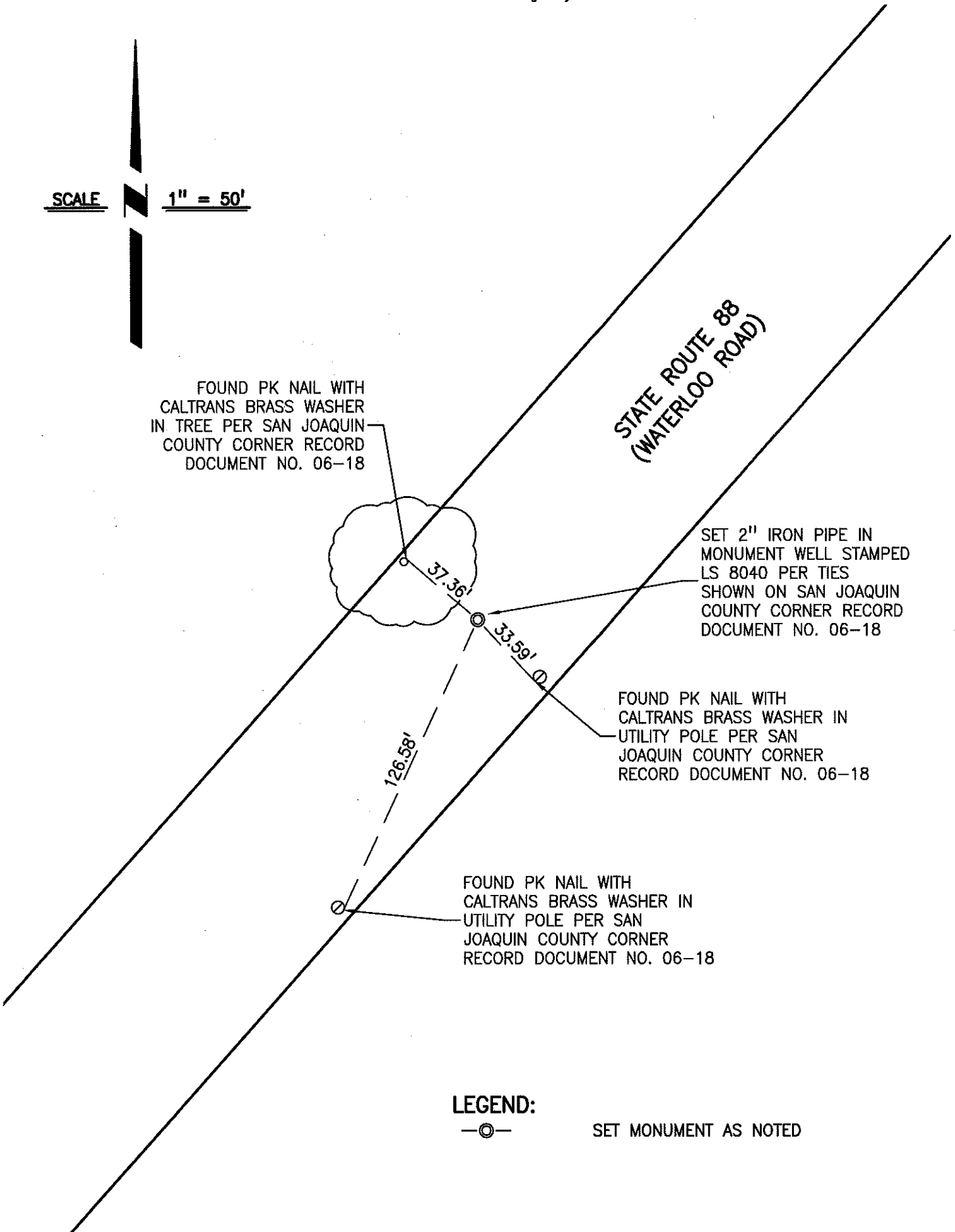
Signed [Signature] P.L.S. or R.C.E. No.: 4842

Title County Surveyor

County Surveyor's Comment _____



SCALE 1" = 50'



FOUND PK NAIL WITH
CALTRANS BRASS WASHER
IN TREE PER SAN JOAQUIN
COUNTY CORNER RECORD
DOCUMENT NO. 06-18

STATE ROUTE 88
(WATERLOO ROAD)

SET 2" IRON PIPE IN
MONUMENT WELL STAMPED
LS 8040 PER TIES
SHOWN ON SAN JOAQUIN
COUNTY CORNER RECORD
DOCUMENT NO. 06-18

FOUND PK NAIL WITH
CALTRANS BRASS WASHER IN
UTILITY POLE PER SAN
JOAQUIN COUNTY CORNER
RECORD DOCUMENT NO. 06-18

FOUND PK NAIL WITH
CALTRANS BRASS WASHER IN
UTILITY POLE PER SAN
JOAQUIN COUNTY CORNER
RECORD DOCUMENT NO. 06-18

LEGEND:



SET MONUMENT AS NOTED