

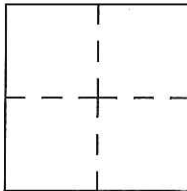
# CORNER RECORD

Agency Index CR-18-76

Document Number \_\_\_\_\_

City of \_\_\_\_\_ County of San Joaquin, California

Brief Legal Description ARAPAHO WAY 500± SOUTH OF SHOSHONE DRIVE  
 (Within Section 21, Township 1 South, Range 7 East, Mount Diablo & Meridian)



**CORNER TYPE**

**COORDINATES (Optional)**

Government Corner  Control   
 Meander  Property   
 Rancho  Other

N. \_\_\_\_\_ E. \_\_\_\_\_

Elevation. \_\_\_\_\_

Units Metric  U.S. Survey Foot

Horizontal Datum \_\_\_\_\_

Zone \_\_\_\_\_ Epoch Date \_\_\_\_\_

Date of Survey March 13, 2018

Vertical Datum \_\_\_\_\_

Complies with Public Resources Code §§8801-8819

Complies with Public Resources Code §§8890-8902

PLS Act Ref:  8765(d)  8771  8773  Other:

Corner/Monument:  Left as found  Established  Rebuilt  Pre-Construction

Found and tagged  Reestablished  Referenced  Post-Construction

Narrative of corner identified and monument as found, set, reset, replaced, or removed:

See sheet #2 for description(s):

**SURVEYOR'S STATEMENT**

This Corner Record was prepared by me or under my direction in conformance with

the Professional Land Surveyor's Act on March 22, 2018

Signed James E. Hart P.L.S. or R.C.E. No. 8657



**COUNTY SURVEYOR'S STATEMENT**

This Corner Record was received March 26, 2018

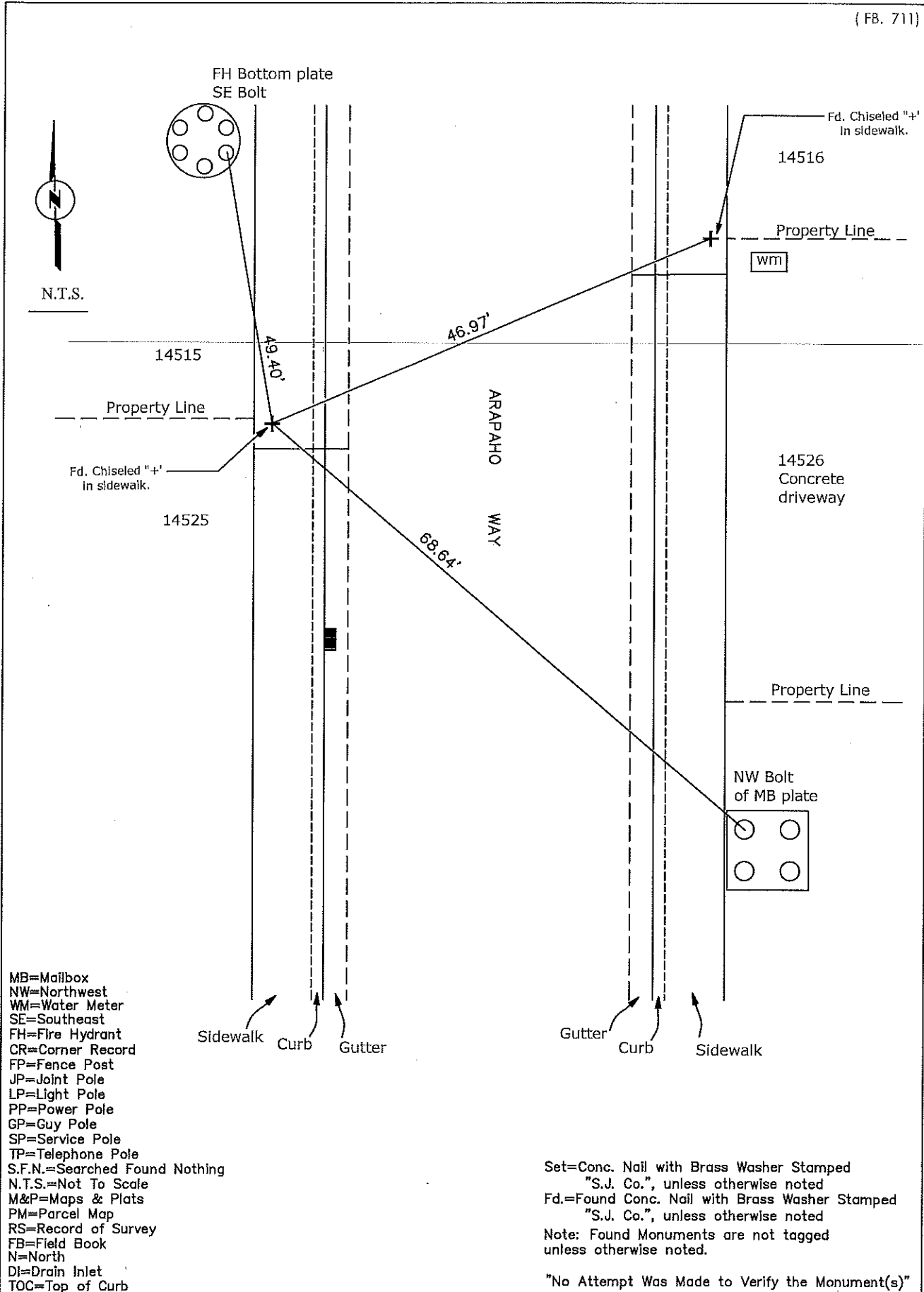
and examined and filed March 28, 2018

Signed Warren D. Smith P.L.S. or R.C.E. No. 4842

Title County Surveyor

**County Surveyor's Comment**





- MB=Mailbox
- NW=Northwest
- WM=Water Meter
- SE=Southeast
- FH=Fire Hydrant
- CR=Corner Record
- FP=Fence Post
- JP=Joint Pole
- LP=Light Pole
- PP=Power Pole
- GP=Guy Pole
- SP=Service Pole
- TP=Telephone Pole
- S.F.N.=Searched Found Nothing
- N.T.S.=Not To Scale
- M&P=Maps & Plats
- PM=Parcel Map
- RS=Record of Survey
- FB=Field Book
- N=North
- DI=Drain Inlet
- TOC=Top of Curb

Set=Conc. Nail with Brass Washer Stamped "S.J. Co.", unless otherwise noted  
 Fd.=Found Conc. Nail with Brass Washer Stamped "S.J. Co.", unless otherwise noted  
 Note: Found Monuments are not tagged unless otherwise noted.  
 "No Attempt Was Made to Verify the Monument(s)"