

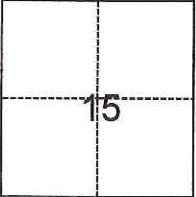
# CORNER RECORD

Agency Index CR-18-72  
Document Number \_\_\_\_\_

City of \_\_\_\_\_ County of San Joaquin, California  
Brief Legal Description East Line Lots 12 & 13, Maps and Plats 8-4, San Joaquin County Records

### CORNER TYPE

### COORDINATES (Optional)



- Government Corner
- Meander
- Rancho
- Control
- Property
- Other

N. \_\_\_\_\_ E. \_\_\_\_\_  
 Elevation \_\_\_\_\_  
 Units  Metric  U.S. Survey Foot  
 Horizontal Datum \_\_\_\_\_  
 Zone \_\_\_\_\_ Epoch Date \_\_\_\_\_  
 Vertical Datum \_\_\_\_\_  
 Complies with Public Resources Code §§8801-8819  
 Complies with Public Resources Code §§8890-8902

Date of Survey January 23, 2018

T. 1 S, R. 5 E., M.D.B.&M.

- PLS Act Ref.:  8765(d)  8771  8773  Other: \_\_\_\_\_
- Corner/Monument:  Left as found  Established  Rebuilt  Pre-Construction  
 Found and tagged  Reestablished  Referenced  Post-Construction

Narrative of corner identified and monument as found, set, reset, replaced, or removed:  
 See sheet #2 for description(s):

Reestablished property corners on east line of Lots 12 and 13, Volume 8, Maps and Plats, Page 4.  
Replaced monuments as shown on attached plat.

### SURVEYOR'S STATEMENT

This Corner Record was prepared by me or under my direction in conformance with  
 the Professional Land Surveyors' Act on March 9, 2018  
 Signed [Signature] P.L.S. or R.C.E. No. 7600



### COUNTY SURVEYOR'S STATEMENT

This Corner Record was received March 9, 2018  
 and examined and filed March 13, 2018  
 Signed [Signature] P.L.S. or R.C.E. No. 4842  
 Title County Surveyor



County Surveyor's Comment



# WONG ENGINEERS, INC.

PLANNING ENGINEERING SURVEYING  
4578 FEATHER RIVER DRIVE, SUITE A  
STOCKTON, CALIFORNIA 95219  
(209) 476-0011

## DESCRIPTION:

THIS DOCUMENT IS FOR THE PURPOSE OF  
RESETTING ANY MISSING OR OBLITERATED CORNERS  
ON EAST LINE OF LOTS 12 AND 13, AS SHOWN ON  
VOLUME 8 OF MAPS & PLATS, PAGE 4, SAN  
JOAQUIN COUNTY RECORDS.

## LEGEND:

- FD. DENOTES FOUND
- I. DENOTES IRON
- M DENOTES MEASURED
- M&P DENOTES MAPS & PLATS,  
BOOK & PAGE
- PP DENOTES POWER POLE
- PC DENOTES PROPERTY CORNER
- R.R. DENOTES RAILROAD
- SFN DENOTES SEARCHED FOUND  
NOTHING

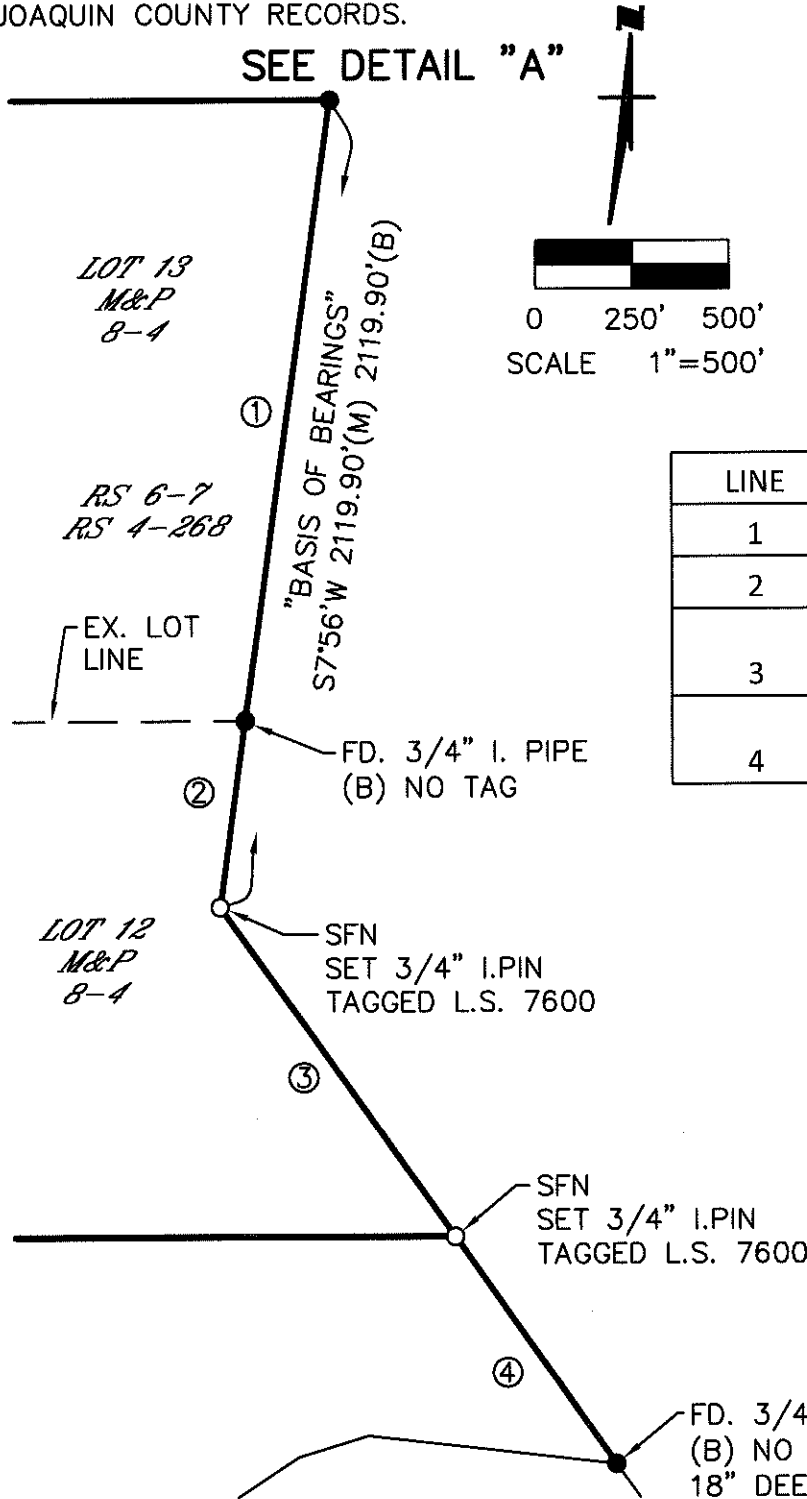
- DENOTES FD. FOUND MONUMENT  
AS NOTED.
- DENOTES SET 3/4" I.PIN TAGGED  
L.S. 7600

## NOTE:

ALL BEARINGS AND DISTANCES ARE  
RECORD UNLESS OTHERWISE NOTED.

## REFERENCES:

- (A) R.S. 4-268
- (B) R.S. 6-7



LINE	BEARING	MEASURED	RECORD
1	S7°56'W (A)	1630.20' (M)	1630.2' (A)
2	S7°56'W (B)	489.70' (M)	489.7' (B)
3	S35°17'18"E (M)	1050.61' (M)	1050.77' (B)
4	S35°17'18"E (M)	726.52' (M)	726.63' (B)

