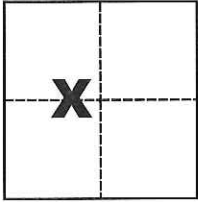


CORNER RECORD

Agency Index CR-18-70
Document Number _____

City of _____ County of San Joaquin, California
Brief Legal Description Parcel "1" per P.M. 22-84, S.J.C.R.



Sec. 8, T.2N., R.7E.,
M.D.B. & M.

CORNER TYPE

Government Corner Control
Meander Property
Rancho Other

Date of Survey December 13, 2017

COORDINATES (Optional)

N. _____ E. _____
Elevation _____
Units Metric U.S. Survey Foot
Horizontal Datum _____
Zone _____ Epoch Date _____
Vertical Datum _____

Complies with Public Resources Code §§8801-8819
 Complies with Public Resources Code §§8890-8902

PLS Act Ref.: 8765(d) 8771 8773 Other:
Corner/Monument: Left as found Established Rebuilt Pre-Construction
 Found and tagged Reestablished Referenced Post-Construction

Narrative of corner identified and monument as found, set, reset, replaced, or removed:

See sheet #2 for description(s):

SURVEYOR'S STATEMENT

This Corner Record was prepared by me or under my direction in conformance with

the Professional Land Surveyors' Act on JAN. 10, 2018

Signed Michael L. Quaranta P.L.S. or R.C.E. No. L.S. 4450



COUNTY SURVEYOR'S STATEMENT

This Corner Record was received March 6, 2018

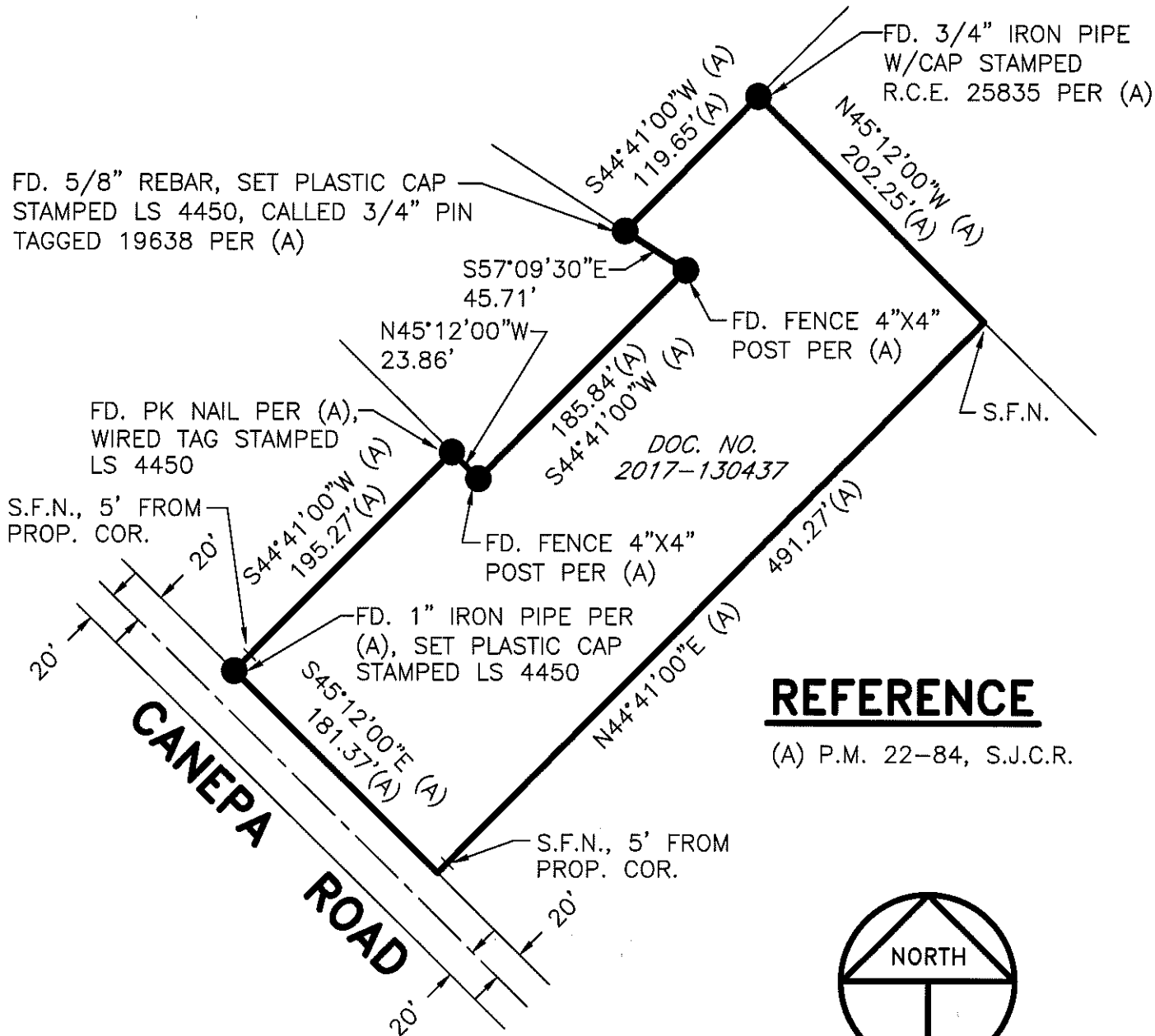
and examined and filed March 13, 2018

Signed Warren D. Smith P.L.S. or R.C.E. No. 4842

Title County Surveyor

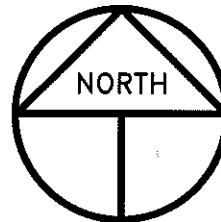
County Surveyor's Comment





REFERENCE

(A) P.M. 22-84, S.J.C.R.



SCALE: 1" = 100'
2017-271

LEGEND

- INDICATES FOUND MONUMENT AS NOTED
- FD. INDICATES FOUND ON THIS SURVEY
- P.M. INDICATES PARCEL MAP, BOOK AND PAGE, S.J.C.R.
- DOC. NO. INDICATES DOCUMENT NUMBER, S.J.C.R.
- S.J.C.R. INDICATES SAN JOAQUIN COUNTY RECORDS
- S.F.N. INDICATES SEARCHED FOUND NOTHING