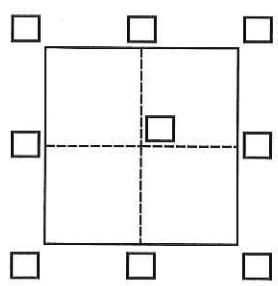


# CORNER RECORD

Agency Index CR-18-68  
Document Number \_\_\_\_\_

City of STOCKTON County of SAN JOAQUIN, California

Brief Legal Description PARCEL 2 OF BOOK 23 OF PARCEL MAPS AT PAGE 118



### CORNER TYPE

- Government Corner  Control
- Meander  Property
- Rancho  Other

Date of Survey January 11, 2018

### COORDINATES (Optional)

- N. \_\_\_\_\_ E. \_\_\_\_\_
- Elevation \_\_\_\_\_
- Units Metric  U.S. Survey Foot
- Horizontal Datum \_\_\_\_\_
- Zone \_\_\_\_\_ Epoch Date \_\_\_\_\_
- Vertical Datum \_\_\_\_\_
- Complies with Public Resources Code §§8801-8819
- Complies with Public Resources Code §§8890-8902

- PLS Act Ref.:  8765(d)  8771  8773  Other: \_\_\_\_\_
- Corner/Monument:  Left as found  Established  Rebuilt  Pre-Construction  
 Found and tagged  Reestablished  Referenced  Post-Construction

Narrative of corner identified and monument as found, set, reset, replaced, or removed:  
 See sheet #2 for description(s):

### SURVEYOR'S STATEMENT

This Corner Record was prepared by me or under my direction in conformance with the Professional Land Surveyors' Act on February 20, 2018

Signed Bryan P. Bonito (P.L.S.) or R.C.E. No. 7521



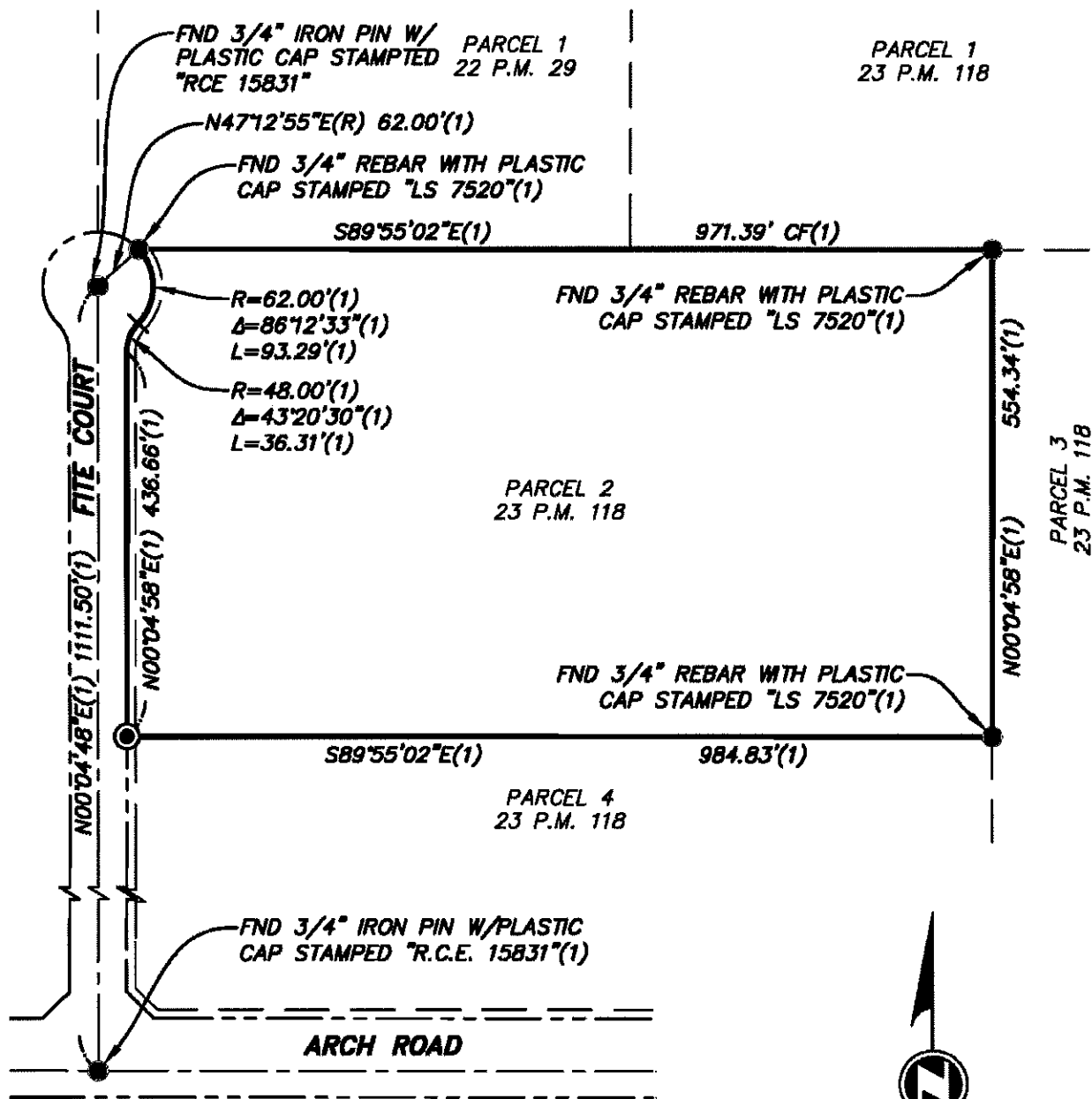
### COUNTY SURVEYOR'S STATEMENT

This Corner Record was received March 1, 2018 and examined and filed March 13, 2018

Signed Warren D. Smith P.L.S. or R.C.E. No. 4842  
Title County Surveyor



County Surveyor's Comment



**LEGEND OF SYMBOLS AND ABBREVIATIONS:**

- INDICATES MONUMENT FOUND AS NOTED
- ⊙ INDICATES SET 3/4" X 24" REBAR WITH BRASS TAG STAMPED "LS 7521" UNLESS NOTED OTHERWISE
- ( ) INDICATES RECORD DATA

S.J.C.R. INDICATES SAN JOAQUIN COUNTY RECORDS

**RECORD DATA:**

(1) BOOK 23 OF PARCEL MAPS AT PAGE 118, S.J.C.R.

