

CORNER RECORD

Agency Index: CR-18-65
Document Number: _____

City of RIPON County of SAN JOAQUIN, California

Brief Legal Description FOUND CHISELED CROSS ON THE SIDEWALK BETWEEN 1425 AND 1431 STANLEY DRIVE, ALSO BEING A 6' WITNESS CORNER TO LOTS 70 AND 71 AS SHOWN ON 26-M&P-139, S.J.C.R.



T.2S, R.8E

CORNER TYPE

- Government Corner
- Meander
- Rancho
- Control
- Property
- Other

Date of Survey 2-14-2018

COORDINATES (Optional)

- N. _____ E. _____
 Elevation _____
 Units Metric U.S. Survey Foot
 Horizontal Datum _____
 Zone _____ Epoch Date _____
 Vertical Datum _____
 Complies with Public Resources Code SS8801-8819
 Complies with Public Resources Code SS8890-8902

PLS Act Ref: 8765(d) 8771 8773 Other:

Corner/Monument: Left as found Established Rebuilt Pre-Construction
 Found and Tagged Reestablished Referenced Post-Construction

Narrative of corner identified and monument as found, set, reset, replaced, or removed:

See sheet #2 for description(s):

FOUND CHISELED CROSS ON SIDEWALK BEING A 6' WITNESS CORNER FOR LOTS 70 AND 71 AS SHOWN ON BOOK 26 OF MAPS AND PLATS AT PAGE 139, SAN JOAQUIN COUNTY RECORDS. SET FOUR (4) NAILS WITH BRASS TAGS STAMPED "LS 6953", ALL AS SHOWN ON SHEET 2.

SURVEYOR'S STATEMENT

This Corner Record was prepared by me or under my direction in conformance with the Land Surveyors' Act on FEBRUARY 16, 2018,

Signed [Signature] P.L.S. or R.C.E. Number 6953



COUNTY SURVEYOR'S STATEMENT

This Corner Record was received February 27, 2018

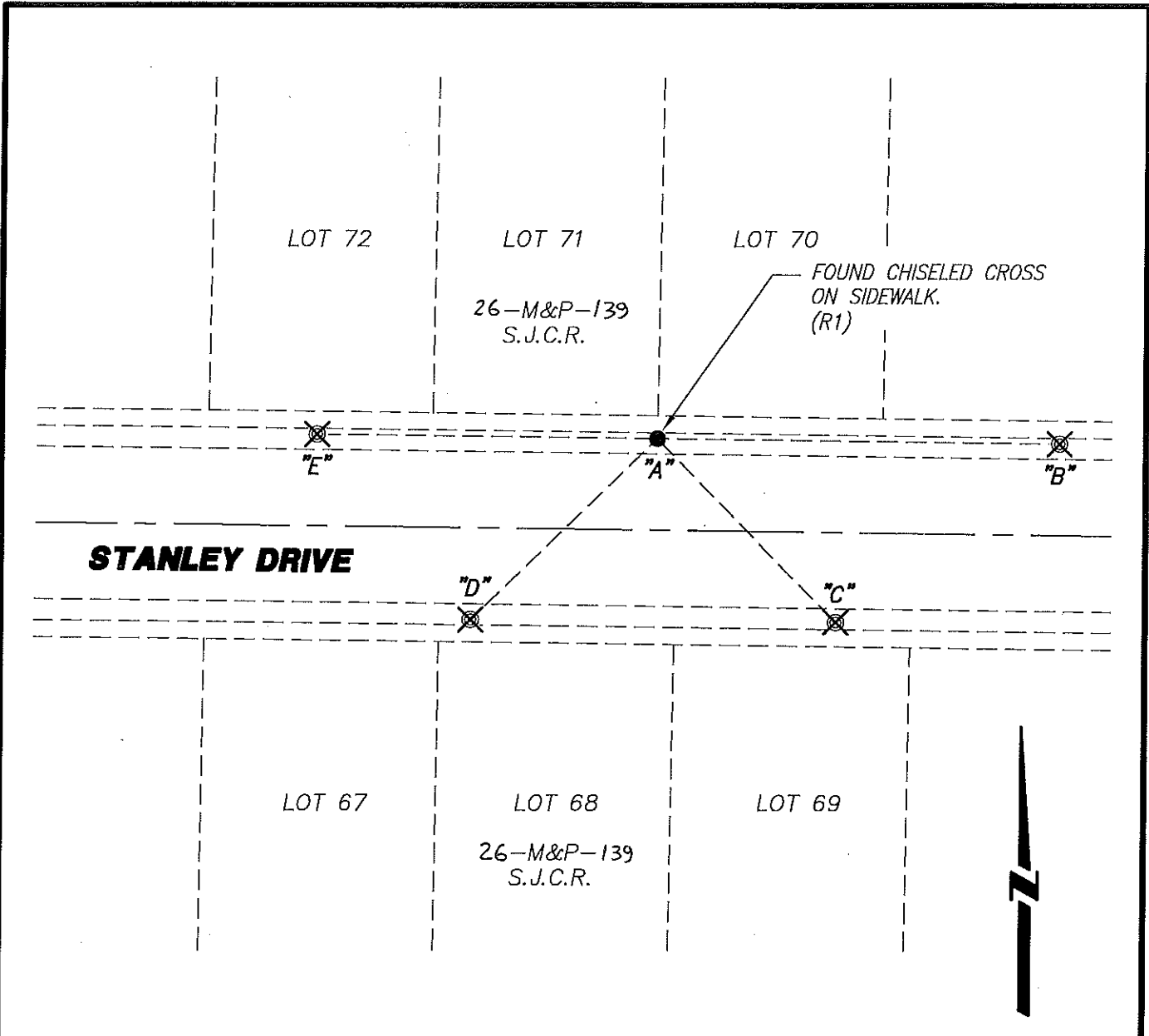
and examined and filed March 13, 2018

Signed [Signature] P.L.S. or R.C.E. No: 4842

Title County Surveyor



County Surveyor's Comment _____



REFERENCE:

(R1) 26-M&P-139, S.J.C.R.

LEGEND:

- ⊗ SET CONCRETE NAIL WITH BRASS TAG
L.S. 6953.
- FOUND MONUMENT AS NOTED.
- M&P- MAPS & PLATS
- S.J.C.R. SAN JOAQUIN COUNTY RECORDS
- (M) MEASURED DISTANCE. ALL DISTANCES ARE
MEASURED UNLESS NOTED OTHERWISE.

⊗ AND DISTANCE TABLE		
BS-@-FS	⊗	FS DISTANCE
B-A-B	00°00'00"	105.530'(M)
B-A-C	45°00'00"	67.290'(M)
B-A-D	135°00'00"	68.025'(M)
B-A-E	180°00'00"	89.380'(M)

NOTE:

THIS CORNER RECORD DOES NOT VERIFY THIS MONUMENT TO BE IN THE CORRECT POSITION.