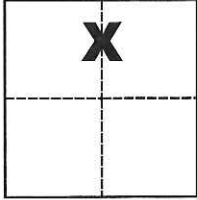


CORNER RECORD

Agency Index CR-18-63

Document Number _____

City of Manteca County of San Joaquin, CaliforniaBrief Legal Description The West and South line of Doc. No. 2002-117964**CORNER TYPE****COORDINATES (Optional)**

Government Corner Control
 Meander Property
 Rancho Other

N. _____ E. _____

Elevation _____

Units Metric U.S. Survey Foot

Horizontal Datum _____

Zone _____ Epoch Date _____

Date of Survey October 19, 2017

Vertical Datum _____

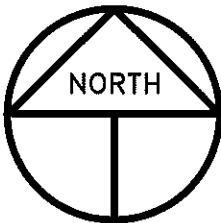
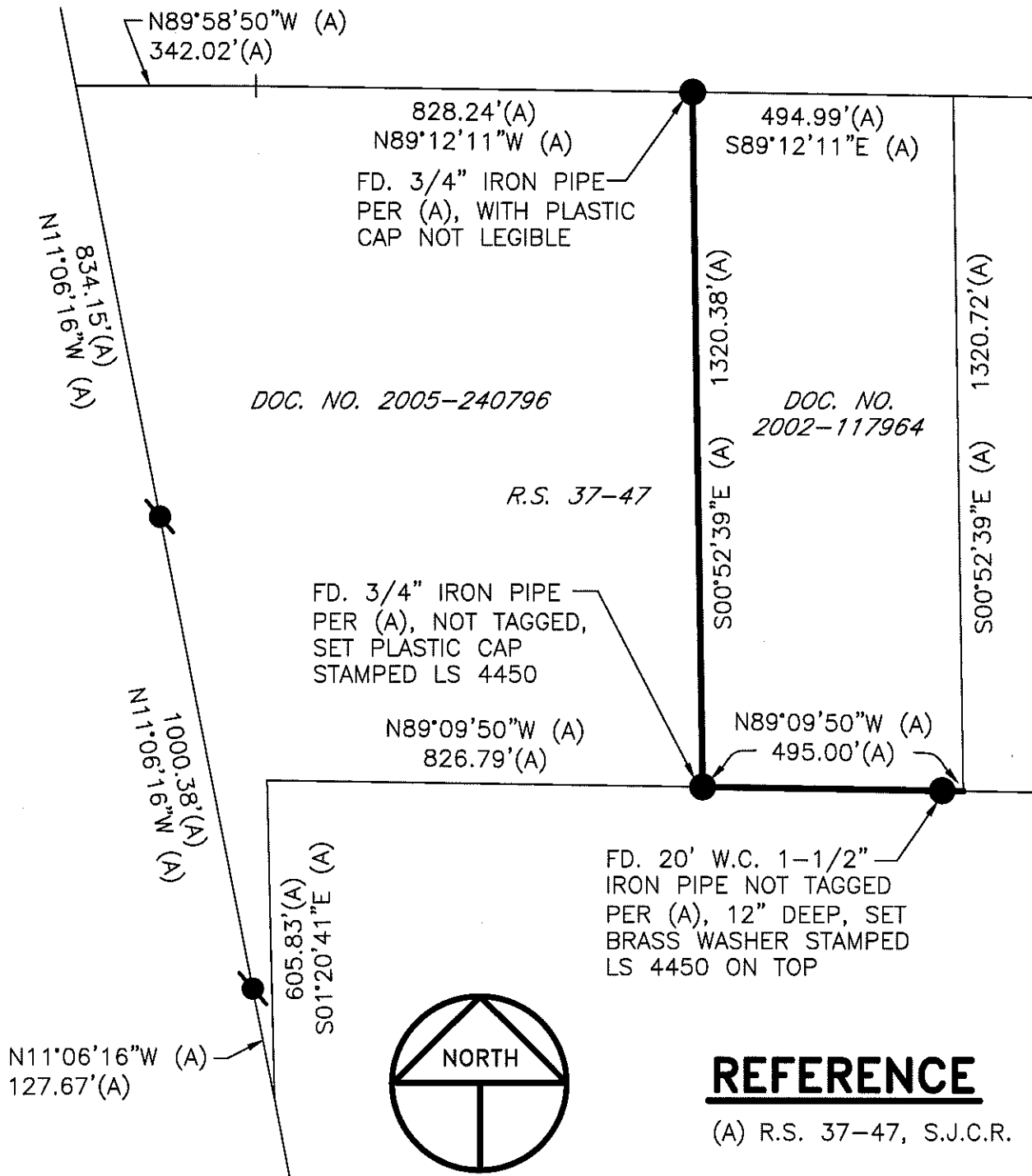
Sec. 3, T.2S., R.7E.,
M.D.B. & M. Complies with Public Resources Code §§8801-8819 Complies with Public Resources Code §§8890-8902PLS Act Ref.: 8765(d) 8771 8773 Other:Corner/Monument: Left as found Established Rebuilt Pre-Construction Found and tagged Reestablished Referenced Post-Construction

Narrative of corner identified and monument as found, set, reset, replaced, or removed:

 See sheet #2 for description(s):**SURVEYOR'S STATEMENT**

This Corner Record was prepared by me or under my direction in conformance with

the Professional Land Surveyors' Act on Jan. 4, 2018Signed Michael L. Quartaro P.L.S. or R.C.E. No. L.S. 4450**COUNTY SURVEYOR'S STATEMENT**This Corner Record was received January 4, 2018and examined and filed March 13, 2018Signed Warren D. Smith P.L.S. or R.C.E. No. 4842Title County Surveyor**County Surveyor's Comment**



REFERENCE

(A) R.S. 37-47, S.J.C.R.

SCALE: 1" = 300'
2017-222

LEGEND

- INDICATES FOUND MONUMENT AS NOTED
- INDICATES FOUND 6"X6" CONC. MON. PER (A), SET ALUMINUM WASHER STAMPED LS 4450 ON TOP
- FD. INDICATES FOUND ON THIS SURVEY
- R.S. INDICATES RECORD OF SURVEY, BOOK AND PAGE, S.J.C.R.
- DOC. NO. INDICATES DOCUMENT NUMBER, S.J.C.R.
- S.J.C.R. INDICATES SAN JOAQUIN COUNTY RECORDS