

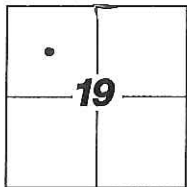
CORNER RECORD

Agency Index: CR-18-59

Document Number: _____

City of STOCKTON County of SAN JOAQUIN, California

Brief Legal Description FOUND MONUMENT AT THE INTERSECTION OF N. EL DORADO STREET AND E. HARDING WAY LOCATED IN THE NORTH HALF OF SECTION 19, C.M. WEBER GRANT



C.M. WEBER GRANT

CORNER TYPE

- Government Corner
- Meander
- Rancho
- Control
- Property
- Other

Date of Survey 12-01-2017

COORDINATES (Optional)

N. _____ E. _____

Elevation _____

Units Metric U.S. Survey Foot

Horizontal Datum _____

Zone _____ Epoch Date _____

Vertical Datum _____

Complies with Public Resources Code SS8801-8819

Complies with Public Resources Code SS8890-8902

PLS Act Ref: 8765(d) 8771 8773 Other:

Corner/
Monument: Left as found Established Rebuilt Pre-Construction
 Found and Tagged Reestablished Referenced Post-Construction

Narrative of corner identified and monument as found, set, reset, replaced, or removed:

See sheet #2 for description(s):

FOUND TWO CUT "X" MONUMENTS. SET THREE (3) CONCRETE NAILS WITH BRASS TAG STAMPED
"LS 6953" AS WITNESS CORNERS, ALL AS SHOWN ON SHEET 2

SURVEYOR'S STATEMENT

This Corner Record was prepared by me or under my direction in conformance with the Land Surveyors' Act on DECEMBER 22, 2017,

Signed [Signature] P.L.S. or R.C.E. Number 6953



COUNTY SURVEYOR'S STATEMENT

This Corner Record was received February 15, 2018

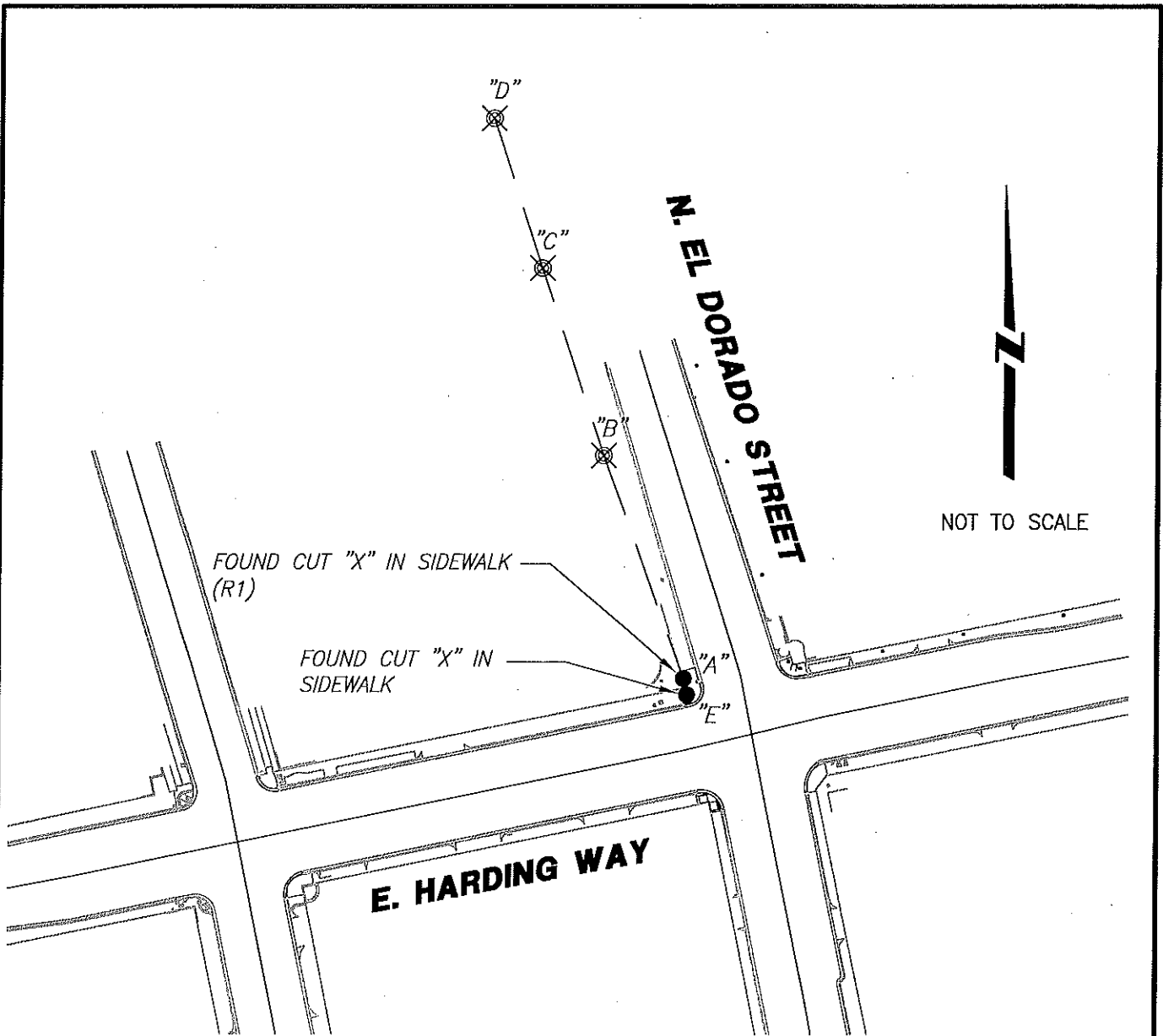
and examined and filed _____

Signed _____ P.L.S. or R.C.E. No: 4842

Title County Surveyor



County Surveyor's Comment _____



REFERENCES:

(R1) "238-DD" SURVEY BY CHAS H. WIDDOWS

LEGEND:

- ⊗ SET CONCRETE NAIL WITH BRASS TAG
L.S. 6953.
- FOUND MONUMENT AS NOTED.
- S.J.C.R. SAN JOAQUIN COUNTY RECORDS
- (M) MEASURED DISTANCE. ALL DISTANCES ARE MEASURED
UNLESS NOTED OTHERWISE.

X AND DISTANCE TABLE		
BS-@-FS	X	FS DISTANCE
B-A-B	00°00'00"	56.32'(M)
B-A-C	00°00'00"	121.33'(M)
B-A-D	00°00'00"	173.51'(M)
B-A-E	204°15'20"	4.85'(M)

NOTE:

THIS CORNER RECORD DOES NOT VERIFY THIS MONUMENT TO BE IN THE CORRECT POSITION.