

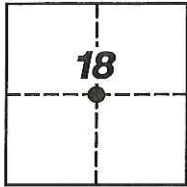
# CORNER RECORD

Agency Index: CR-18-58

Document Number: \_\_\_\_\_

City of RIPON County of SAN JOAQUIN, California

Brief Legal Description FOUND BRASS DISK IN MONUMENT WELL AT THE INTERSECTION OF RIVER ROAD AND FULTON AVENUE BEING THE CENTER OF SECTION 18, T.2S, R.8E M.D.B.&M.



T.2S, R.8E

### CORNER TYPE

- Government Corner
- Meander
- Rancho
- Control
- Property
- Other

Date of Survey 1-12-2018

### COORDINATES (Optional)

N. 2100271.249 E. 6378514.135

Elevation 59.50

Units  Metric  U.S. Survey Foot

Horizontal Datum NAD83

Zone 3 Epoch Date 2004.9147-2005.09

Vertical Datum NAVD 88

Complies with Public Resources Code SS8801-8819

Complies with Public Resources Code SS8890-8902

PLS Act Ref:  8765(d)  8771  8773  Other:

Corner/Monument:  Left as found  Established  Rebuilt  Pre-Construction  
 Found and Tagged  Reestablished  Referenced  Post-Construction

Narrative of corner identified and monument as found, set, reset, replaced, or removed:

See sheet #2 for description(s):

FOUND 2-1/2" BRASS DISK IN MONUMENT WELL AS SHOWN ON BOOK 38 OF MAPS AND PLATS AT PAGE 8, AND AS SHOWN ON BOOK 35 OF SURVEYS AT PAGE 196, SAN JOAQUIN COUNTY RECORDS.

SET FOUR (4) NAILS WITH BRASS TAGS STAMPED "LS 6953", ALL AS SHOWN ON SHEET 2.

### SURVEYOR'S STATEMENT

This Corner Record was prepared by me or under my direction in conformance with the Land Surveyors' Act on FEBRUARY 1, 2018,

Signed [Signature] P.L.S. or R.C.E. Number 6953



### COUNTY SURVEYOR'S STATEMENT

This Corner Record was received February 12, 2018

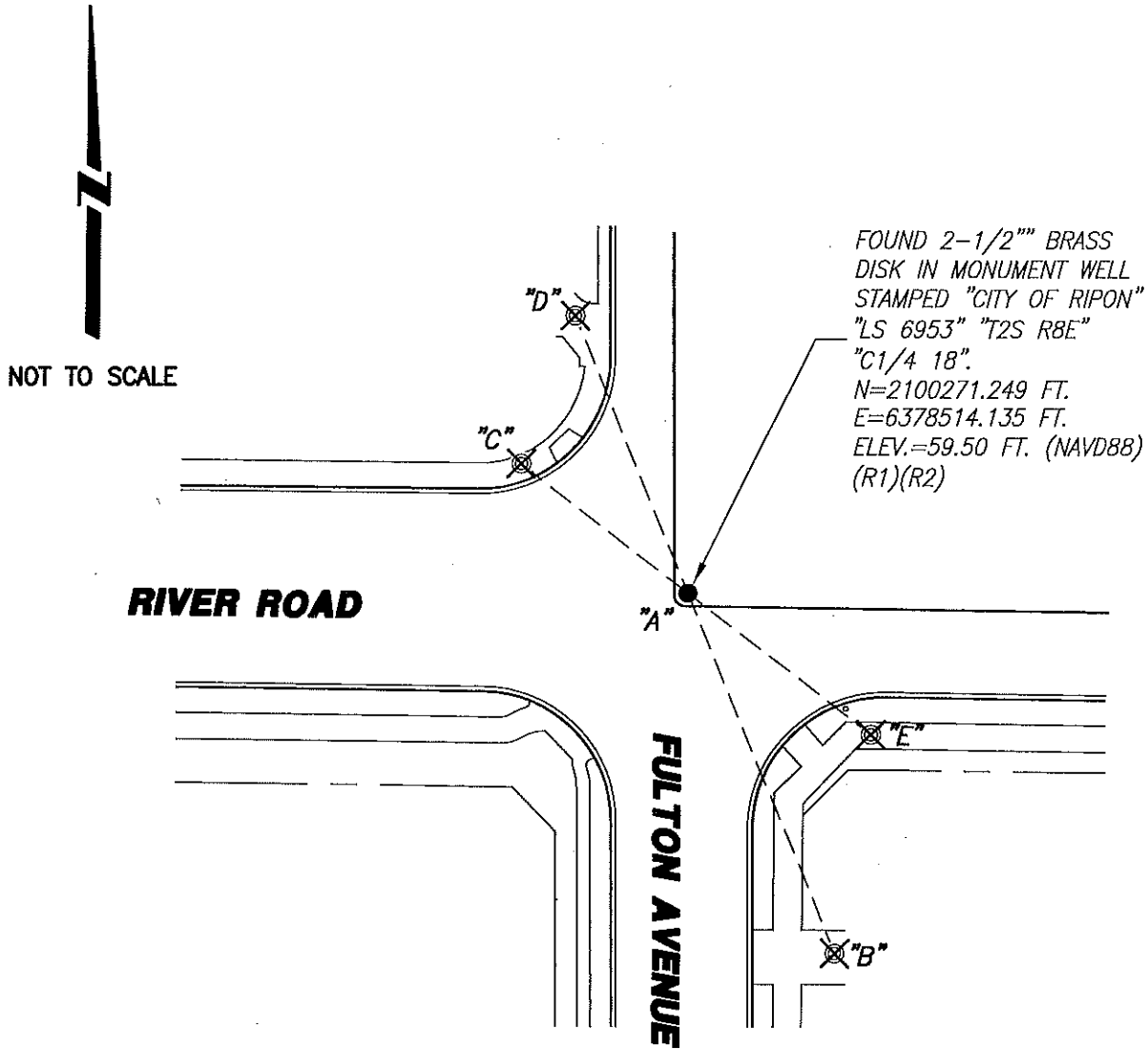
and examined and filed March 2, 2018

Signed [Signature] P.L.S. or R.C.E. No: 4842

Title County Surveyor



County Surveyor's Comment \_\_\_\_\_



FOUND 2-1/2" BRASS  
DISK IN MONUMENT WELL  
STAMPED "CITY OF RIPON"  
"LS 6953" "T2S R8E"  
"C1/4 18".  
N=2100271.249 FT.  
E=6378514.135 FT.  
ELEV.=59.50 FT. (NAVD88)  
(R1)(R2)

**REFERENCE:**

- (R1) 38-M&P-8, S.J.C.R.
- (R2) 35-S-196, S.J.C.R.

**LEGEND:**

- ⊗ SET CONCRETE NAIL WITH BRASS TAG  
L.S. 6953.
- FOUND MONUMENT AS NOTED.
- M&P- MAPS & PLATS
- S- RECORD OF SURVEY
- S.J.C.R. SAN JOAQUIN COUNTY RECORDS
- (M) MEASURED DISTANCE. ALL DISTANCES ARE  
MEASURED UNLESS NOTED OTHERWISE.

⚡ - DISTANCE & ELEVATION TABLE

BS-@-FS	⚡	FS DISTANCE	ELEVATION
B-A-B	00'00'00"	178.605'(M)	59.150 FT.
B-A-C	150'00'00"	97.090'(M)	59.025 FT.
B-A-D	180'00'00"	137.265'(M)	59.420 FT.
B-A-E	330'00'00"	106.335'(M)	59.480 FT.

**NOTE:**

THIS CORNER RECORD DOES NOT  
VERIFY THIS MONUMENT TO BE  
IN THE CORRECT POSITION.