

CORNER RECORD

Agency Index: CR-18-57
Document Number: _____

City of LATHROP County of SAN JOAQUIN, California

Brief Legal Description FOUND MONUMENT APPROX 930.0' +/- SOUTH OF OF LOUISE AVENUE ON HARLAN ROAD. LOCATED IN THE NORTHEAST QUARTER OF SECTION 34. T.1S, R.6E M.D.B.&M.



T.1S, R.6E

CORNER TYPE

- Government Corner
- Meander
- Rancho
- Control
- Property
- Other

Date of Survey 12-22-2017

COORDINATES (Optional)

- N. _____ E. _____
 Elevation _____
 Units Metric U.S. Survey Foot
 Horizontal Datum _____
 Zone _____ Epoch Date _____
 Vertical Datum _____
 Complies with Public Resources Code SS8801-8819
 Complies with Public Resources Code SS8890-8902

PLS Act Ref: 8765(d) 8771 8773 Other:

Corner/Monument: Left as found Established Rebuilt Pre-Construction
 Found and Tagged Reestablished Referenced Post-Construction

Narrative of corner identified and monument as found, set, reset, replaced, or removed:

See sheet #2 for description(s):

FOUND 3/4" IRON PIN IN MONUMENT WELL AS SHOWN ON BOOK 31 OF MAPS AND PLATS AT PAGE 85, SAN JOAQUIN COUNTY RECORDS. SET FOUR (4) NAILS WITH BRASS TAGS STAMPED "LS 6953", ALL AS SHOWN ON SHEET 2.

SURVEYOR'S STATEMENT

This Corner Record was prepared by me or under my direction in conformance with the Land Surveyors' Act on JANUARY 17, 2018,

Signed [Signature] P.L.S. or R.C.E. Number 6953



COUNTY SURVEYOR'S STATEMENT

This Corner Record was received February 6, 2018

and examined and filed March 2, 2018

Signed [Signature] P.L.S. or R.C.E. No: 4842

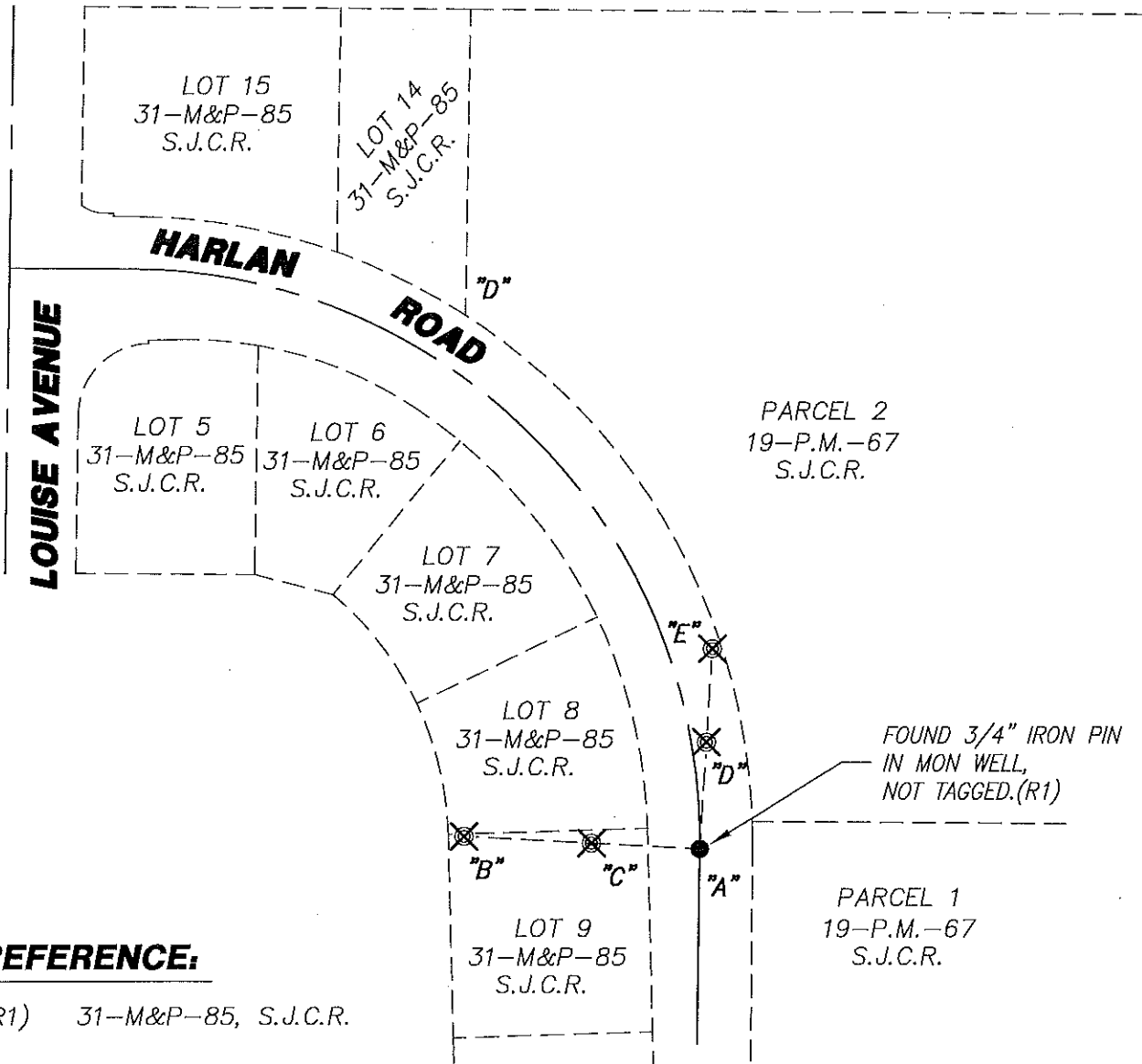
Title County Surveyor



County Surveyor's Comment _____



NOT TO SCALE



REFERENCE:

(R1) 31-M&P-85, S.J.C.R.

LEGEND:

- ⊗ SET CONCRETE NAIL WITH BRASS TAG
L.S. 6953.
- FOUND MONUMENT AS NOTED.
- M&P- MAPS & PLATS
- P.M.- PARCEL MAP
- S.J.C.R. SAN JOAQUIN COUNTY RECORDS
- (M) MEASURED DISTANCE. ALL DISTANCES ARE
MEASURED UNLESS NOTED OTHERWISE.

X AND DISTANCE TABLE		
BS-@-FS	X	FS DISTANCE
B-A-B	00°00'00"	225.445'(M)
B-A-C	00°00'00"	103.655'(M)
B-A-D	90°06'17"	102.165'(M)
B-A-E	90°06'17"	191.720'(M)

NOTE:

THIS CORNER RECORD DOES NOT VERIFY THIS MONUMENT TO BE IN THE CORRECT POSITION.