

# CORNER RECORD

Agency Index: CR-18-56  
 Document Number: \_\_\_\_\_

City of LATHROP County of SAN JOAQUIN, California

Brief Legal Description FOUND MONUMENTS AT THE INTERSECTION OF HARLAN ROAD AND D'ARCY PARKWAY. LOCATED IN THE SOUTHEAST QUARTER OF SECTION 34. T.1S, R.6E M.D.B.&M.



T.1S, R.6E

### CORNER TYPE

- Government Corner     Control  
 Meander                     Property  
 Rancho                         Other

Date of Survey 12-22-2017

### COORDINATES (Optional)

N. \_\_\_\_\_ E. \_\_\_\_\_  
 Elevation \_\_\_\_\_  
 Units  Metric  U.S. Survey Foot  
 Horizontal Datum \_\_\_\_\_  
 Zone \_\_\_\_\_ Epoch Date \_\_\_\_\_  
 Vertical Datum \_\_\_\_\_  
 Complies with Public Resources Code SS8801-8819  
 Complies with Public Resources Code SS8890-8902

PLS Act Ref:  8765(d)     8771     8773     Other:  
 Corner/Monument:  Left as found     Established     Rebuilt     Pre-Construction  
                            Found and Tagged     Reestablished     Referenced     Post-Construction

Narrative of corner identified and monument as found, set, reset, replaced, or removed:

See sheet #2 for description(s):

FOUND 3/4" IRON PINS TAGGED "RCE 24029", IN MONUMENT WELLS AND A 3/4" IRON PIPE INSIDE A 2" IRON PIPE IN A MONUMENT WELL AS SHOWN ON BOOK 31 OF MAPS AND PLATS AT PAGE 70, SAN JOAQUIN COUNTY RECORDS. SET SEVEN (7) NAILS WITH BRASS TAGS STAMPED "LS 6953", ALL AS SHOWN ON SHEET 2.

### SURVEYOR'S STATEMENT

This Corner Record was prepared by me or under my direction in conformance with the Land Surveyors' Act on JANUARY 17, 2018,  
 Signed [Signature] P.L.S. or R.C.E. Number 6953

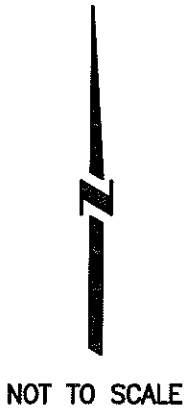
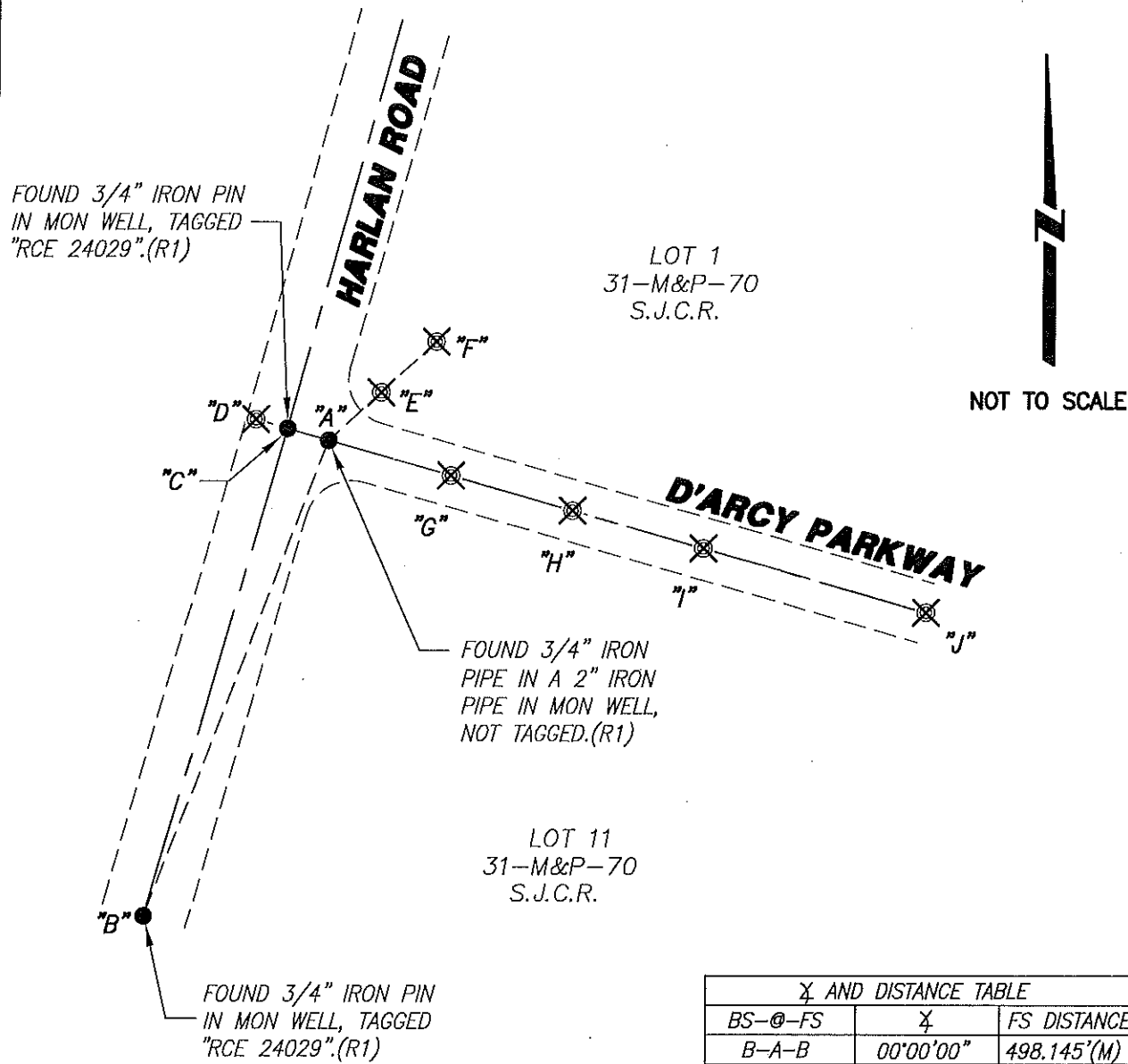


### COUNTY SURVEYOR'S STATEMENT

This Corner Record was received February 6, 2018  
 and examined and filed March 2, 2018  
 Signed [Signature] P.L.S. or R.C.E. No: 4842  
 Title County Surveyor



County Surveyor's Comment \_\_\_\_\_  
 \_\_\_\_\_  
 \_\_\_\_\_



**REFERENCE:**

(R1) 31-M&P-70, S.J.C.R.

**LEGEND:**

- ⊗ SET CONCRETE NAIL WITH BRASS TAG  
L.S. 6953.
- FOUND MONUMENT AS NOTED.
- M&P- MAPS & PLATS
- S.J.C.R. SAN JOAQUIN COUNTY RECORDS
- (M) MEASURED DISTANCE. ALL DISTANCES ARE  
MEASURED UNLESS NOTED OTHERWISE.

Bearing and Distance Table		
BS-@-FS	Bearing	FS Distance
B-A-B	00°00'00"	498.145'(M)
B-A-C	85°05'45"	42.130'(M)
B-A-D	85°05'45"	74.630'(M)
B-A-E	206°30'43"	69.285'(M)
B-A-F	206°30'43"	142.340'(M)
B-A-G	265°02'17"	125.065'(M)
B-A-H	265°02'17"	249.445'(M)
B-A-I	265°02'17"	382.695'(M)
B-A-J	265°02'17"	610.780'(M)

**NOTE:**

THIS CORNER RECORD DOES NOT VERIFY THIS MONUMENT TO BE IN THE CORRECT POSITION.