

CORNER RECORD

Agency Index: CR-18-55

Document Number: _____

City of LATHROP County of SAN JOAQUIN, California

Brief Legal Description FOUND MONUMENTS AT THE INTERSECTION OF HARLAN ROAD AND NESTLE WAY. LOCATED IN THE SOUTHEAST QUARTER OF SECTION 34. T.1S, R.6E M.D.B.&M.



T.1S, R.6E

CORNER TYPE

- Government Corner
- Meander
- Rancho
- Control
- Property
- Other

Date of Survey 12-22-2017

COORDINATES (Optional)

- N. _____ E. _____
- Elevation _____
- Units Metric U.S. Survey Foot
- Horizontal Datum _____
- Zone _____ Epoch Date _____
- Vertical Datum _____
- Complies with Public Resources Code SS8801-8819
- Complies with Public Resources Code SS8890-8902

PLS Act Ref: 8765(d) 8771 8773 Other:

Corner/Monument: Left as found Established Rebuilt Pre-Construction
 Found and Tagged Reestablished Referenced Post-Construction

Narrative of corner identified and monument as found, set, reset, replaced, or removed:

See sheet #2 for description(s):

FOUND 3/4" IRON PINS IN MONUMENT WELLS AS SHOWN ON BOOK 31 OF MAPS AND PLATS AT PAGE 70, SAN JOAQUIN COUNTY RECORDS. SET FIVE (5) NAILS WITH BRASS TAGS STAMPED "LS 6953", ALL AS SHOWN ON SHEET 2.

SURVEYOR'S STATEMENT

This Corner Record was prepared by me or under my direction in conformance with the Land Surveyors' Act on JANUARY 17, 2018,

Signed [Signature] P.L.S. or R.C.E. Number 6953



COUNTY SURVEYOR'S STATEMENT

This Corner Record was received February 6, 2018

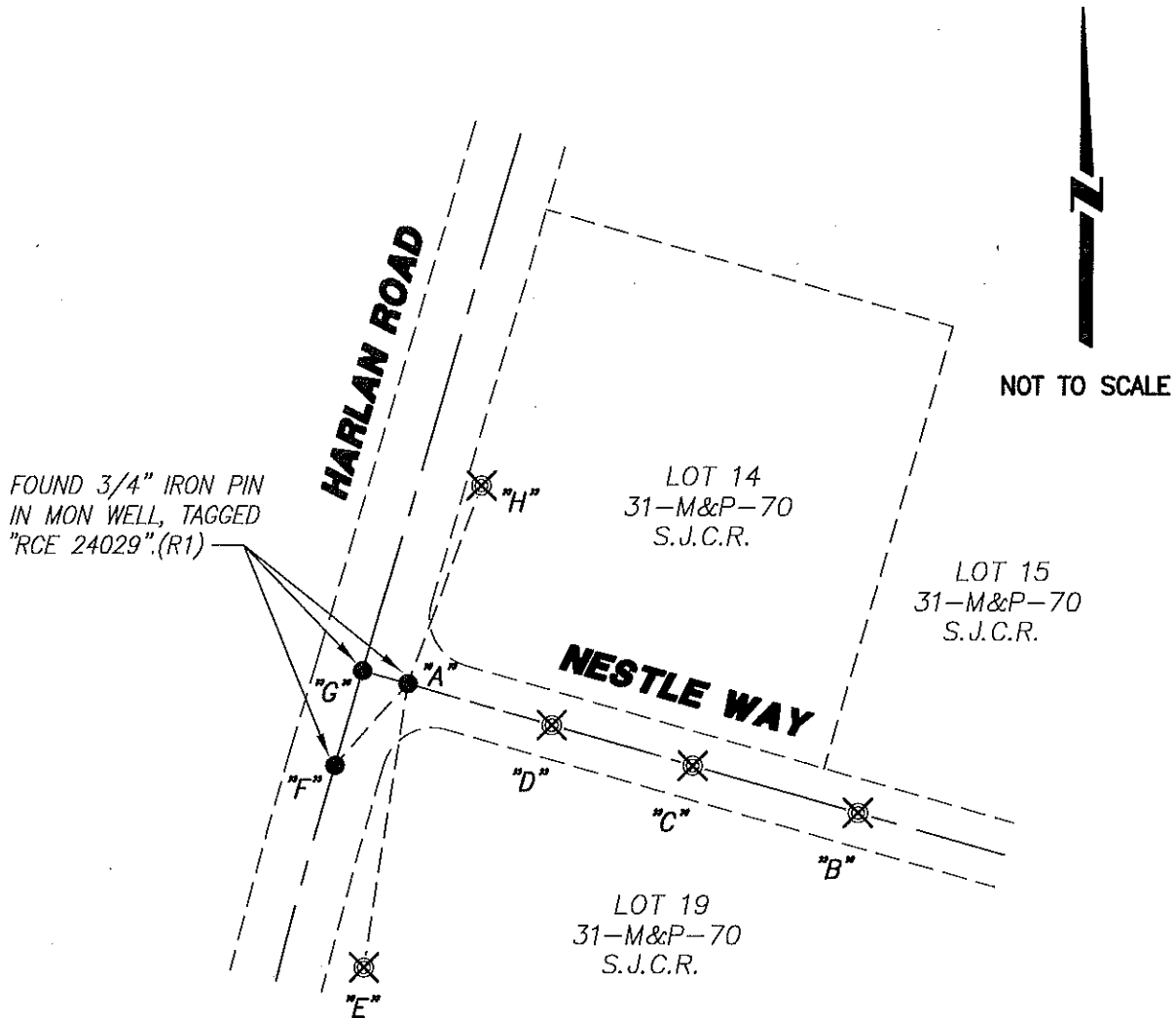
and examined and filed March 2, 2018

Signed [Signature] P.L.S. or R.C.E. No: 4842

Title County Surveyor



County Surveyor's Comment _____



REFERENCE:

(R1) 31-M&P-70, S.J.C.R.

LEGEND:

- ⊗ SET CONCRETE NAIL WITH BRASS TAG
L.S. 6953.
- FOUND MONUMENT AS NOTED.
- M&P- MAPS & PLATS
- S.J.C.R. SAN JOAQUIN COUNTY RECORDS
- (M) MEASURED DISTANCE. ALL DISTANCES ARE
MEASURED UNLESS NOTED OTHERWISE.

X AND DISTANCE TABLE		
BS-@-FS	X	FS DISTANCE
B-A-B	00°00'00"	421.465'(M)
B-A-C	00°00'00"	266.965'(M)
B-A-D	00°00'00"	135.515'(M)
B-A-E	82°22'09"	257.575'(M)
B-A-F	115°32'50"	97.700'(M)
B-A-G	180°02'48"	42.000'(M)
B-A-H	274°13'26"	189.290'(M)

NOTE:

THIS CORNER RECORD DOES NOT VERIFY THIS MONUMENT TO BE IN THE CORRECT POSITION.