

CORNER RECORD

Agency Index: CR-18-54
Document Number: _____

City of LATHROP County of SAN JOAQUIN, California

Brief Legal Description FOUND MONUMENTS ON HARLAN ROAD AT SCHILLING AVENUE AND 360'+/- SOUTH OF SCHILLING AVENUE, LOCATED IN THE SOUTHWEST QUARTER OF SECTION 23. T.1S, R.6E M.D.B.&M.



T.1S, R.6E

CORNER TYPE

- Government Corner
- Meander
- Rancho
- Control
- Property
- Other

Date of Survey 12-22-2017

COORDINATES (Optional)

- N. _____ E. _____
 Elevation _____
 Units Metric U.S. Survey Foot
 Horizontal Datum _____
 Zone _____ Epoch Date _____
 Vertical Datum _____
 Complies with Public Resources Code SS8801-8819
 Complies with Public Resources Code SS8890-8902

PLS Act Ref: 8765(d) 8771 8773 Other:

Corner/Monument: Left as found Established Rebuilt Pre-Construction
 Found and Tagged Reestablished Referenced Post-Construction

Narrative of corner identified and monument as found, set, reset, replaced, or removed:

See sheet #2 for description(s):

FOUND 2-1/2" BRASS DISK IN MONUMENT WELLS AS SHOWN ON BOOK 36 OF SURVEYS AT PAGE 9, AND A BOLT AND WASHER AS SHOWN ON BOOK 33 OF SURVEYS AT PAGE 66, SAN JOAQUIN COUNTY RECORDS. SET EIGHT (8) NAILS WITH BRASS TAGS STAMPED "LS 6953" ALL AS SHOWN ON SHEET 2.

SURVEYOR'S STATEMENT

This Corner Record was prepared by me or under my direction in conformance with the Land Surveyors' Act on JANUARY 17, 2018,
 Signed [Signature] P.L.S. or R.C.E. Number 6953



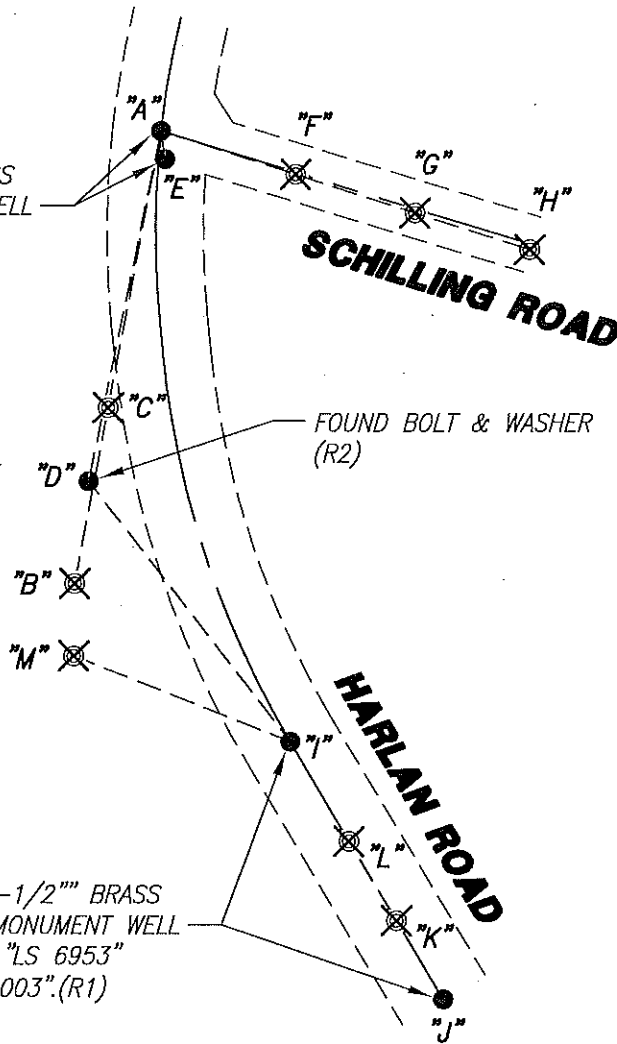
COUNTY SURVEYOR'S STATEMENT

This Corner Record was received February 6, 2018
 and examined and filed March 2, 2018
 Signed [Signature] P.L.S. or R.C.E. No: 4842
 Title County Surveyor



County Surveyor's Comment _____

FOUND 2-1/2" BRASS
DISK IN MONUMENT WELL
STAMPED "LS 6953"
"MARCH 2003".(R1)



FOUND BOLT & WASHER
(R2)

FOUND 2-1/2" BRASS
DISK IN MONUMENT WELL
STAMPED "LS 6953"
"MARCH 2003".(R1)

NOT TO SCALE

REFERENCE:

- (R1) 36-S-9, S.J.C.R.
- (R2) 33-S-66, S.J.C.R.

LEGEND:

- ⊗ SET CONCRETE NAIL WITH BRASS TAG
L.S. 6953.
- FOUND MONUMENT AS NOTED.
- S- RECORD OF SURVEY

S.J.C.R. SAN JOAQUIN COUNTY RECORDS

(M) MEASURED DISTANCE. ALL DISTANCES ARE
MEASURED UNLESS NOTED OTHERWISE.

X AND DISTANCE TABLE		
BS-@-FS	X	FS DISTANCE
B-A-B	00°00'00"	401.160'(M)
B-A-C	00°00'00"	245.345'(M)
B-A-D	00°52'20"	312.115'(M)
B-A-E	341°01'23"	24.960'(M)
B-A-F	277°26'52"	124.200'(M)
B-A-G	277°26'52"	234.890'(M)
B-A-H	277°26'52"	339.970'(M)
J-I-J	00°00'00"	263.030'(M)
J-I-K	00°00'00"	182.690'(M)
J-I-L	00°00'00"	101.750'(M)
J-I-M	142°42'40"	203.760'(M)
J-I-D	173°07'22"	288.545'(M)

NOTE:

THIS CORNER RECORD DOES NOT
VERIFY THIS MONUMENT TO BE
IN THE CORRECT POSITION.