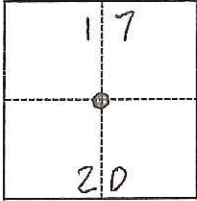


CORNER RECORD

Agency Index CR-18-45

Document Number _____

City of _____ County of San Joaquin, CaliforniaBrief Legal Description 1/4 Corner of Sections 17 & 20; T.1N., R.9E., M.D.M.**CORNER TYPE****COORDINATES (Optional)**

- Government Corner Control
 Meander Property
 Rancho Other

N. 2161466.38 E. 6414745.18

Elevation _____

Units Metric U.S. Survey FootHorizontal Datum CCS83Zone 3 Epoch Date 2010

Vertical Datum _____

 Complies with Public Resources Code §§8801-8819 Complies with Public Resources Code §§8890-8902Date of Survey January 4, 2018PLS Act Ref.: 8765(d) 8771 8773 Other:Corner/Monument: Left as found Established Rebuilt Pre-Construction Found and tagged Reestablished Referenced Post-Construction

Narrative of corner identified and monument as found, set, reset, replaced, or removed:

 See sheet #2 for description(s):

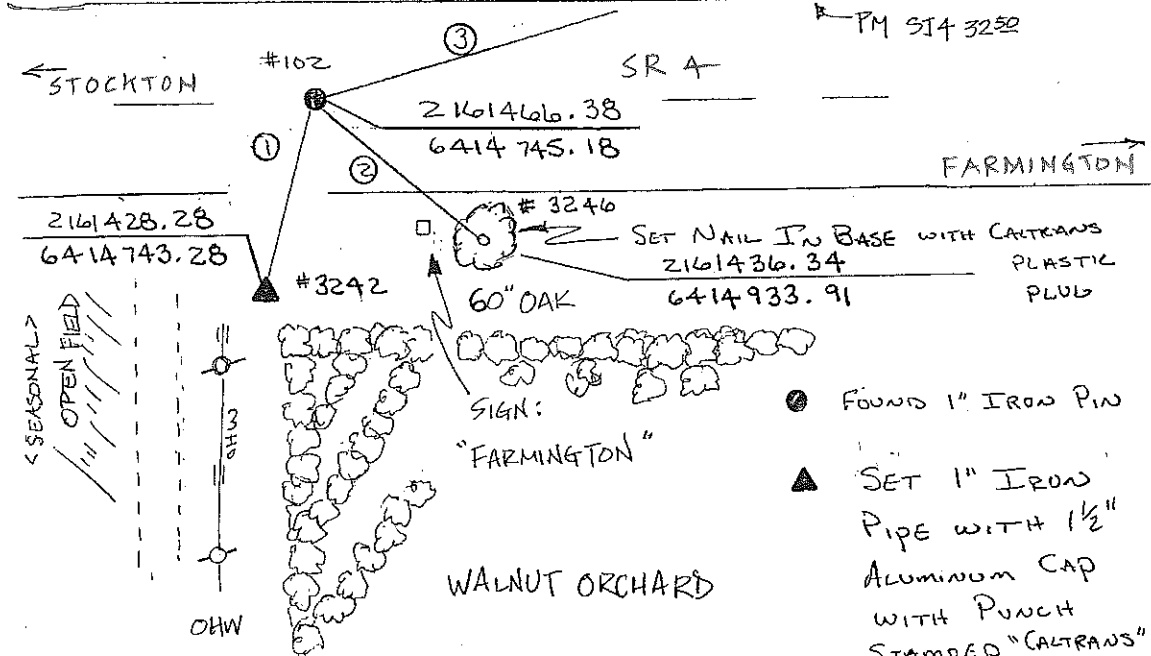
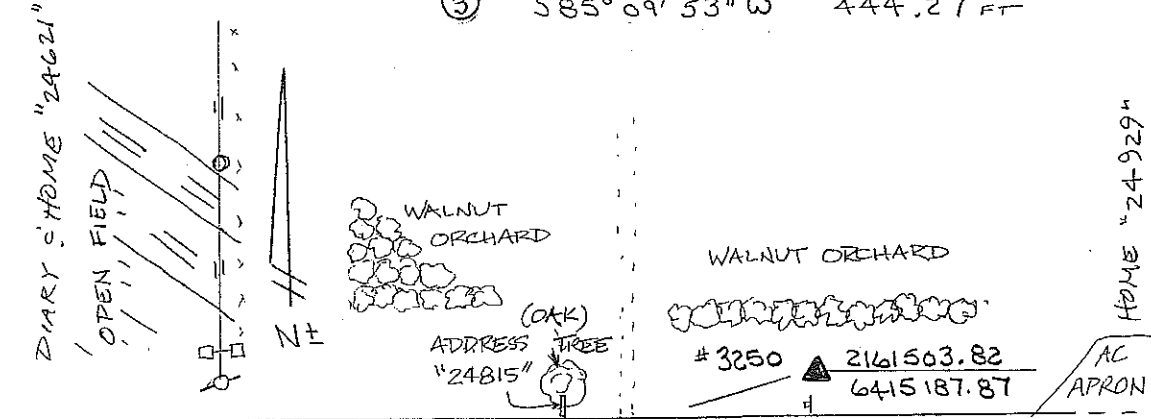
Found 1" Iron Pin per R.S. 27-49 M.&P., S.J.C.R.. No attempt was made to determine validity of monument or its proper location in relation to the legal boundary lines in the area. Coordinates provided per static survey and conventional ties. See "Sheet 2".

SURVEYOR'S STATEMENT

This Corner Record was prepared by me or under my direction in conformance with the Professional Land Surveyors' Act on January 16, 2018

Signed *Aurens M. Gilmore* P.L.S. or R.C.E. No. 8339**COUNTY SURVEYOR'S STATEMENT**This Corner Record was received January 18, 2018and examined and filed February 7, 2018Signed *Warren D. Smith* P.L.S. or R.C.E. No. 4842Title County Surveyor**County Surveyor's Comment**

- ① N 02° 51' 44" E 38.15 FT
- ② N 80° 57' 27" W 191.10 FT
- ③ S 85° 09' 53" W 444.27 FT



- FOUND 1" IRON PIN
- ▲ SET 1" IRON PIPE WITH 1 1/2" ALUMINUM CAP WITH PUNCH STAMPED "CALTRANS"