

CORNER RECORD

Agency Index CR-18-44

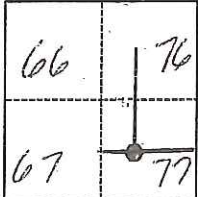
Document Number _____

City of _____ County of San Joaquin, California

Brief Legal Description Corner at Intersection of Gillis Rd. & Hwy 4, Section 77; C.M. WEBER GRANT

CORNER TYPE

COORDINATES (Optional)



- Government Corner Control
 Meander Property
 Rancho Other

N. 2168832.53 E. 6359284.95

Elevation _____

Units Metric U.S. Survey Foot

Horizontal Datum CCS83

Zone 3 Epoch Date 2010

Vertical Datum _____

Complies with Public Resources Code §§8801-8819

Complies with Public Resources Code §§8890-8902

Date of Survey January 4, 2018

PLS Act Ref.: 8765(d) 8771 8773 Other:

Corner/Monument: Left as found Established Rebuilt Pre-Construction
 Found and tagged Reestablished Referenced Post-Construction

Narrative of corner identified and monument as found, set, reset, replaced, or removed:

See sheet #2 for description(s):

Found 1" Pin per R.S. 4-249 M.&P., S.J.C.R.. No attempt was made to determine validity of monument or its proper location in relation to the legal boundary lines in the area. Coordinates provided per static survey and conventional ties. See "Sheet 2".

SURVEYOR'S STATEMENT

This Corner Record was prepared by me or under my direction in conformance with

the Professional Land Surveyors' Act on January 16, 2018

Signed Aurens M. Gilmore P.L.S. or R.C.E. No. 8339



COUNTY SURVEYOR'S STATEMENT

This Corner Record was received January 18, 2018

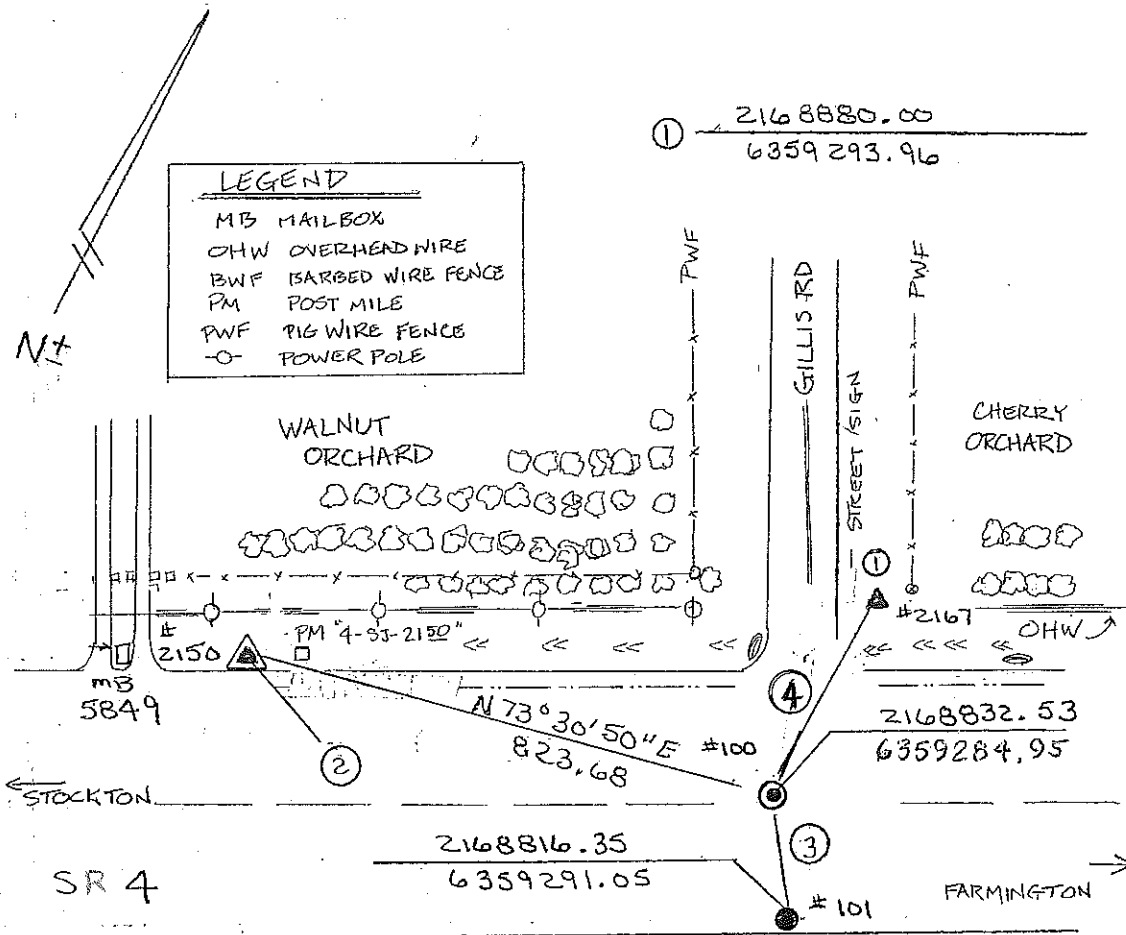
and examined and filed February 7, 2018

Signed Warren D. Smith P.L.S. or R.C.E. No. 4842

Title County Surveyor

County Surveyor's Comment _____





- ② $\frac{2168598.78}{6358495.13}$
- ③ N 20° 38' 45" W 17.29 FT
- ④ S 10° 44' 49" W 48.31 FT
- ⊙ FOUND 1" S JCO BOLT WITH PUNCH
- FOUND 2 1/2" BRASS CAP IN CONCRETE STAMPED L56670
- ▲ SET 1" IRON PIPE WITH 1 1/2" CALTRANS ALUM. CAP
- ▲ FOUND 1" IRON PIPE WITH RED CALTRANS PLASTIC PLUG