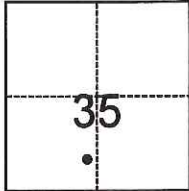


# CORNER RECORD

Agency Index CR-18-43  
 Document Number \_\_\_\_\_

City of \_\_\_\_\_ County of San Joaquin, California  
 Brief Legal Description Parcel B, P.M. 8-155



**CORNER TYPE**

Government Corner     Control  
 Meander                     Property  
 Rancho                         Other

Date of Survey August 24, 2017

**COORDINATES (Optional)**

N. \_\_\_\_\_ E. \_\_\_\_\_  
 Elevation \_\_\_\_\_  
 Units  Metric     U.S. Survey Foot  
 Horizontal Datum \_\_\_\_\_  
 Zone \_\_\_\_\_ Epoch Date \_\_\_\_\_  
 Vertical Datum \_\_\_\_\_  
 Complies with Public Resources Code §§8801-8819  
 Complies with Public Resources Code §§8890-8902

T.5N., R.8E., M.D.B.&M.

PLS Act Ref.:  8765(d)     8771     8773     Other:  
 Corner/Monument:  Left as found     Established     Rebuilt     Pre-Construction  
 Found and tagged     Reestablished     Referenced     Post-Construction

Narrative of corner identified and monument as found, set, reset, replaced, or removed:  
 See sheet #2 for description(s):

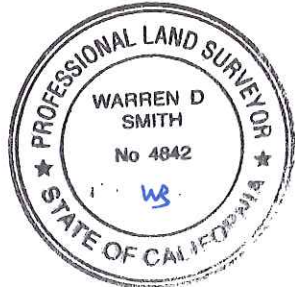
### SURVEYOR'S STATEMENT

This Corner Record was prepared by me or under my direction in conformance with  
 the Professional Land Surveyors' Act on September 17, 2017  
 Signed Joe Murphy P.L.S. or R.C.E. No. L.S. 7269

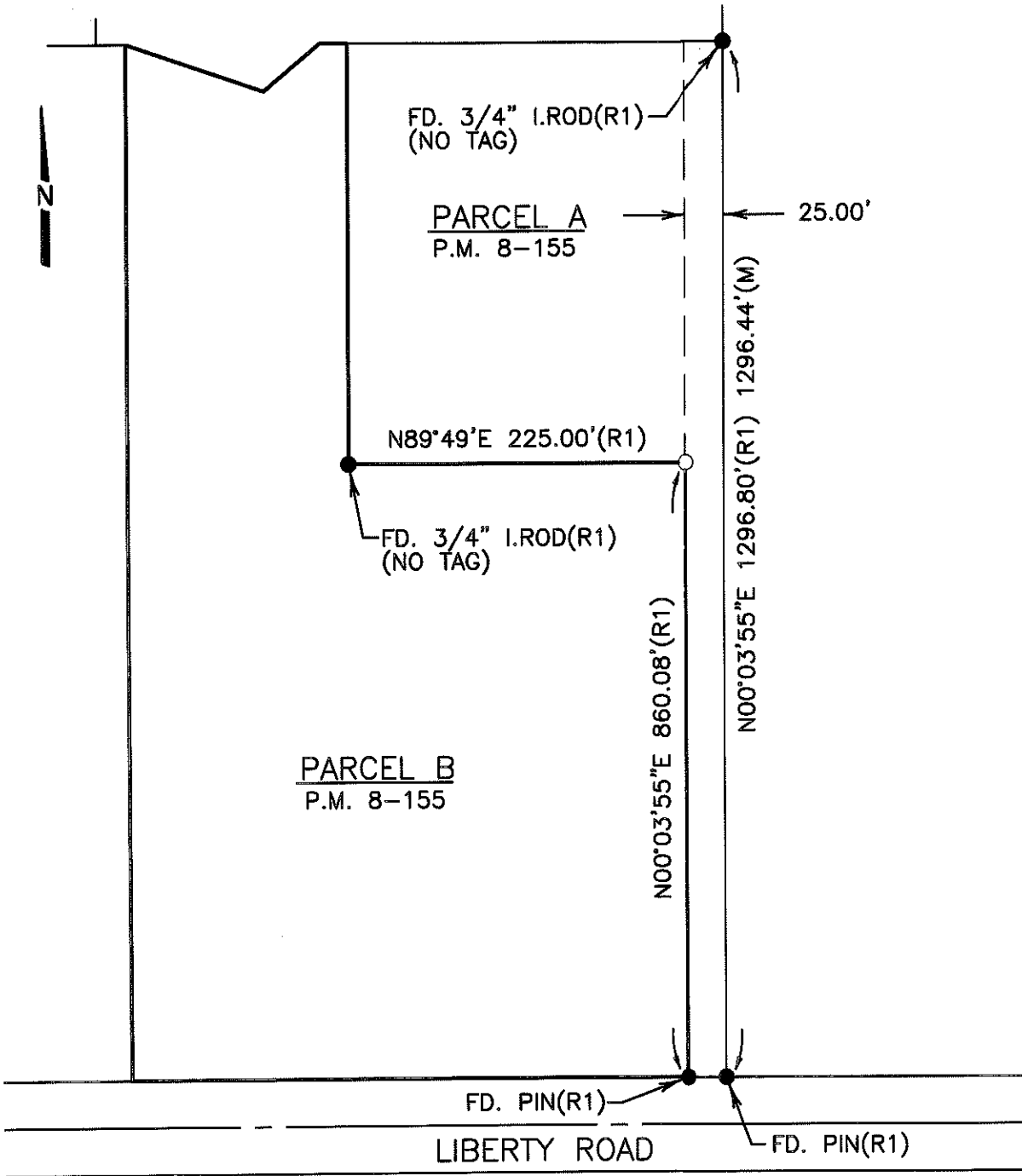


### COUNTY SURVEYOR'S STATEMENT

This Corner Record was received January 26, 2018  
 and examined and filed February 7, 2018  
 Signed Warren D. Smith P.L.S. or R.C.E. No. 4842  
 Title County Surveyor



County Surveyor's Comment



**LEGEND**

- FD. I.ROD (M) FOUND IRON ROD MEASURED
- FOUND MONUMENT AS NOTED
- SET 3/4" IRON ROD, WITH CAP STAMPED "L.S. 7269"

**REFERENCES**

(R1) P.M. 8-155

**DILLON & MURPHY**  
 CONSULTING CIVIL ENGINEERS  
 ENGINEERING • PLANNING • SURVEYING  
 847 N. CLIFF AVENUE, SUITE A2, LODI, CALIFORNIA 95240 (209) 334-8613  
 17100