

# CORNER RECORD

Agency Index CR-18-42  
Document Number \_\_\_\_\_

City of \_\_\_\_\_ County of San Joaquin, California  
Brief Legal Description \_\_\_\_\_ Parcel 1, P.M. 19-185

### CORNER TYPE

### COORDINATES (Optional)



- Government Corner
- Meander
- Rancho
- Control
- Property
- Other

Date of Survey August 30, 2017

N. \_\_\_\_\_ E. \_\_\_\_\_  
 Elevation \_\_\_\_\_  
 Units  Metric  U.S. Survey Foot  
 Horizontal Datum \_\_\_\_\_  
 Zone \_\_\_\_\_ Epoch Date \_\_\_\_\_  
 Vertical Datum \_\_\_\_\_  
 Complies with Public Resources Code §§8801-8819  
 Complies with Public Resources Code §§8890-8902

T.1N., R.8E., M.D.B.&M.

- PLS Act Ref.:  8765(d)  8771  8773  Other:
- Corner/Monument:  Left as found  Established  Rebuilt  Pre-Construction  
 Found and tagged  Reestablished  Referenced  Post-Construction

Narrative of corner identified and monument as found, set, reset, replaced, or removed:

See sheet #2 for description(s):

### SURVEYOR'S STATEMENT

This Corner Record was prepared by me or under my direction in conformance with the Professional Land Surveyors' Act on September 17, 2017

Signed Joe Murphy (P.L.S.) or R.C.E. No. L.S. 7269



### COUNTY SURVEYOR'S STATEMENT

This Corner Record was received January 26, 2018

and examined and filed February 7, 2018

Signed Warren D. Smith P.L.S. or R.C.E. No. 4842

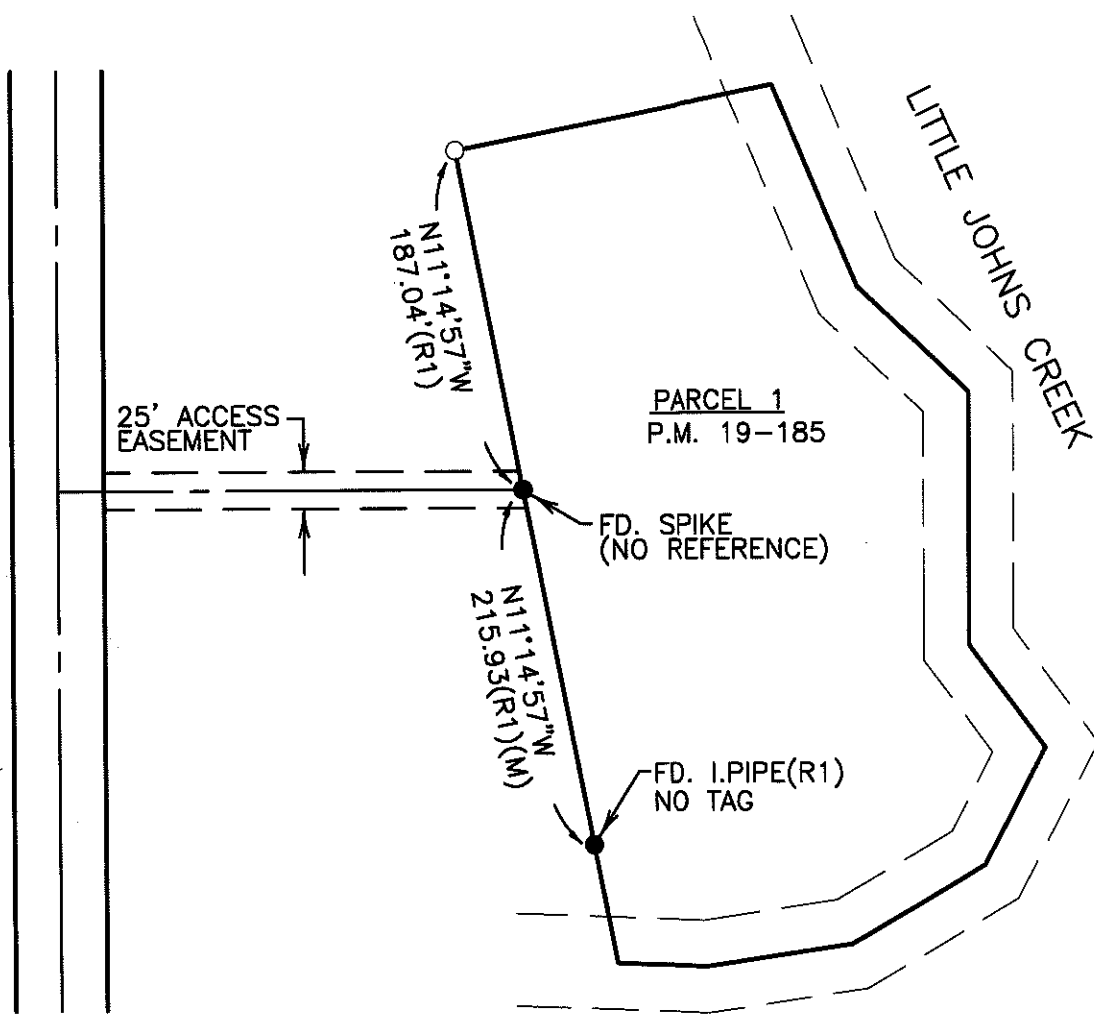
Title County Surveyor

County Surveyor's Comment





VAN ALLEN ROAD



**LEGEND**

- FD. I.P.I.PE (M) FOUND IRON PIPE MEASURED
- FOUND MONUMENT AS NOTED
- SET 3/4" IRON ROD, WITH CAP STAMPED "L.S. 7269"

**REFERENCES**

(R1) P.M. 19-185

**DILLON & MURPHY**  
 CONSULTING CIVIL ENGINEERS  
 ENGINEERING • PLANNING • SURVEYING  
 847 N. CLIFF AVENUE, SUITE A2, LODI, CALIFORNIA 95240 (209) 334-0613  
 17106