

# CORNER RECORD

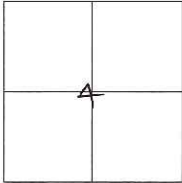
Agency Index CR-18-41

Document Number \_\_\_\_\_

City of STOCKTON

County of SAN JOAQUIN, California

Brief Legal Description MONUMENT PRESERVATION FOR A PORTION OF SUBDIVISION NO. 9 of STOCKTON ACRES, VOL. 9 M&P, PAGE 64 & SUBDIVISION NO. 3 of STOCKTON ACRES VOL. 7 M&P, PAGE 11, S.J.C.R.



### CORNER TYPE

Government Corner  Control

Meander  Property

Rancho  Other

### COORDINATES (Optional)

N. \_\_\_\_\_ E. \_\_\_\_\_

Elevation \_\_\_\_\_

Units Metric  U.S. Survey Foot

Horizontal Datum NAD 83

Zone III Epoch Date 1991.35

Vertical Datum \_\_\_\_\_

Complies with Public Resources Code §§8801-8819

Complies with Public Resources Code §§8890-8902

C.M. WEBER GRANT

Date of Survey SEPTEMBER 13, 2017

PLS Act Ref:  8765(d)  8771  8773  Other:

Corner/Monument:  Left as found  Established  Rebuilt  Pre-Construction

Found and tagged  Reestablished  Referenced  Post-Construction

Narrative of corner identified and monument as found, set, reset, replaced, or removed:

See sheet #2 for description(s) :

### SURVEYOR'S STATEMENT

This Corner Record was prepared by me or under my direction in conformance with

the Professional Land Surveyors' Act on JANUARY 10th, 2018.

Signed [Signature] P.L.S. or R.C.E. No. 7051



### COUNTY SURVEYOR'S STATEMENT

This Corner Record was received January 16, 2018

and examined and filed February 7, 2018.

Signed Warren D. Smith P.L.S. or R.C.E. No. 4842

Title County Surveyor

County Surveyor's Comment \_\_\_\_\_

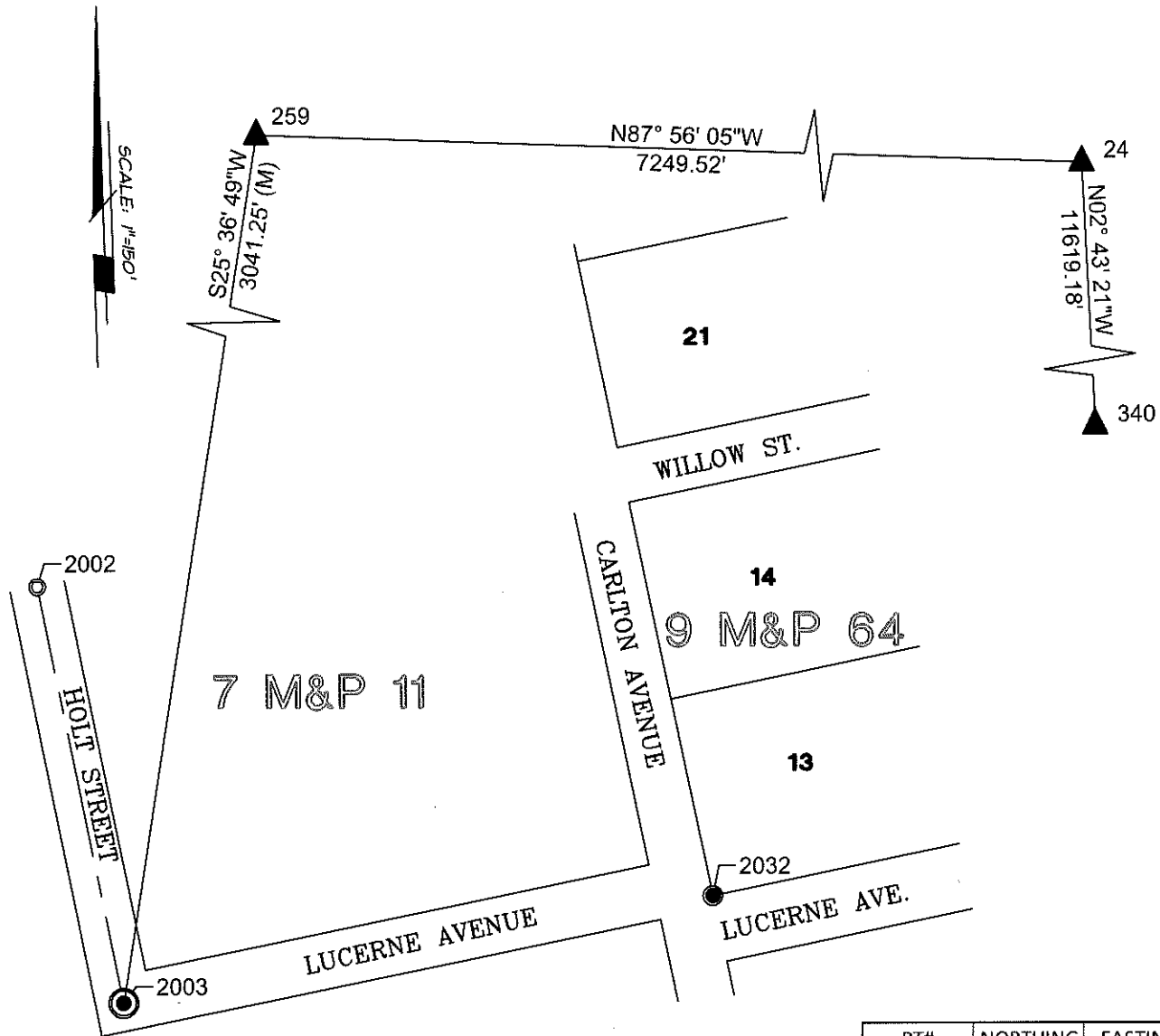


DATUM STATEMENT:

COORDINATES SHOWN HEREON ARE GRID AND ARE BASED ON CITY OF STOCKTON MONUMENTS 24, 259 AND 340 CALIFORNIA COORDINATE SYSTEM (CCS83), ZONE III, 1983 NAD, (1991.35 EPOCH STOCKTON & SAN JOAQUIN COUNTY GPS ADJUSTMENT) AS SHOWN ON RECORD OF SURVEY BOOK 35 OF SURVEYS, PAGE 05.

STATEMENT OF PURPOSE:

THE PURPOSE OF THIS SURVEY IS TO IDENTIFY AND RECORD THE LOCATION OF EXISTING MONUMENTS PRIOR TO PG&E IMPROVEMENTS. NO CLAIM IS MADE AS TO THE RELATIONSHIP OF THE MONUMENTS SHOWN HEREON TO THE EXISTING PROPERTY LINES. ORIGINAL LOT LINES SHOWN ARE FOR GENERAL LOCATION AND INFORMATIONAL PURPOSES ONLY.



REFERENCES

- 10 SURVEYS 208
- 9 MAPS and PLATS 64
- 7 MAPS and PLATS 11
- 1 PARCEL MAPS 97
- S.J.C.R. SAN JOAQUIN COUNTY RECORDS
- (M) MEASURED ON THIS SURVEY

PT#	NORTHING	EASTING
2002	2173389.05	6322948.18
2003	2173014.55	6323024.78
2032	2173109.02	6323554.25

LEGEND:

- ▲ CITY OF STOCKTON CONTROL STATION PER 35 RS 5.
- FOUND 5/8" IRON ROD IN MON WELL.
- FOUND CONCRETE NAIL.
- FOUND 3/4" IRON PIN PER 10 S 108.