

CORNER RECORD

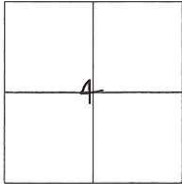
Agency Index CR-18-38

Document Number _____

City of STOCKTON

County of SAN JOAQUIN, California

Brief Legal Description MONUMENT PRESERVATION FOR A PORTION OF WESTMINSTER ABBEY ESTATES, VOL. 25 MAPS AND PLATS, PAGE 90, SAN JOAQUIN COUNTY RECORDS.



CORNER TYPE

Government Corner Control

Meander Property

Rancho Other

COORDINATES (Optional)

N. _____ E. _____

Elevation _____

Units Metric U.S. Survey Foot

Horizontal Datum NAD 83

Zone III Epoch Date 1991.35

Vertical Datum _____

Complies with Public Resources Code §§8801-8819

Complies with Public Resources Code §§8890-8902

C.M. WEBER GRANT

Date of Survey SEPTEMBER 13, 2017

PLS Act Ref: 8765(d) 8771 8773 Other: _____

Corner/Monument: Left as found Established Rebuilt Pre-Construction

Found and tagged Reestablished Referenced Post-Construction

Narrative of corner identified and monument as found, set, reset, replaced, or removed:

See sheet #2 for description(s) :

SURVEYOR'S STATEMENT

This Corner Record was prepared by me or under my direction in conformance with

the Professional Land Surveyors' Act on JANUARY 10th, 2018.

Signed [Signature] P.L.S. or R.C.E. No. 7051



COUNTY SURVEYOR'S STATEMENT

This Corner Record was received January 16, 2018

and examined and filed February 7, 2018.

Signed Warren D. Smith P.L.S. or R.C.E. No. 4842

Title County Surveyor

County Surveyor's Comment _____



DATUM STATEMENT:

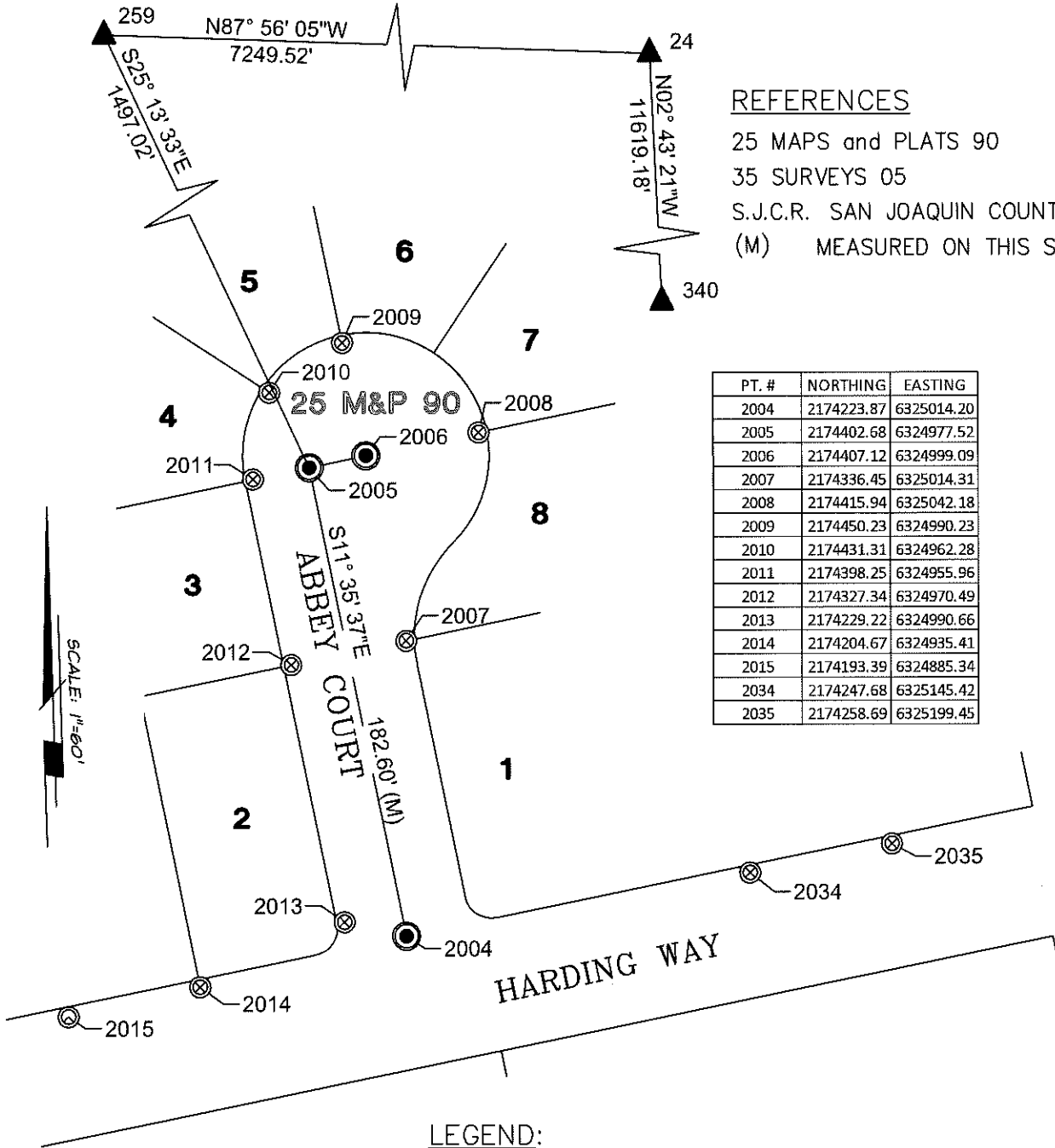
COORDINATES SHOWN HEREON ARE GRID AND ARE BASED ON CITY OF STOCKTON MONUMENTS 24, 259 AND 340 CALIFORNIA COORDINATE SYSTEM (CCS83), ZONE III, 1983 NAD, (1991.35 EPOCH STOCKTON & SAN JOAQUIN COUNTY GPS ADJUSTMENT) AS SHOWN ON RECORD OF SURVEY BOOK 35 OF SURVEYS, PAGE 05.

STATEMENT OF PURPOSE:

THE PURPOSE OF THIS SURVEY IS TO IDENTIFY AND RECORD THE LOCATION OF EXISTING MONUMENTS PRIOR TO PG&E IMPROVEMENTS. NO CLAIM IS MADE AS TO THE RELATIONSHIP OF THE MONUMENTS SHOWN HEREON TO THE EXISTING PROPERTY LINES. ORIGINAL LOT LINES SHOWN ARE FOR GENERAL LOCATION AND INFORMATIONAL PURPOSES ONLY.

REFERENCES

- 25 MAPS and PLATS 90
- 35 SURVEYS 05
- S.J.C.R. SAN JOAQUIN COUNTY RECORDS (M) MEASURED ON THIS SURVEY



PT. #	NORTHING	EASTING
2004	2174223.87	6325014.20
2005	2174402.68	6324977.52
2006	2174407.12	6324999.09
2007	2174336.45	6325014.31
2008	2174415.94	6325042.18
2009	2174450.23	6324990.23
2010	2174431.31	6324962.28
2011	2174398.25	6324955.96
2012	2174327.34	6324970.49
2013	2174229.22	6324990.66
2014	2174204.67	6324935.41
2015	2174193.39	6324885.34
2034	2174247.68	6325145.42
2035	2174258.69	6325199.45

LEGEND:

- ▲ INDICATES CITY OF STOCKTON CONTROL STATION PER 35 RS 5.
- ⊗ INDICATES FOUND CUT CROSS, NO REFERENCE.
- ⊙ INDICATES FOUND CHISELED CROWS FOOT, NO REFERENCE.
- INDICATES FOUND 3/4" IRON PIN IN MONUMENT BOX PER 25 M&P 90.