

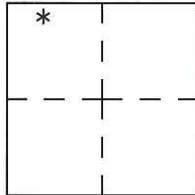
# CORNER RECORD

Agency Index CR-18-37  
Document Number \_\_\_\_\_

City of Ripon County of San Joaquin, California  
Brief Legal Description east line of lands shown in Bk 32 RS 192

### CORNER TYPE

### COORDINATES (Optional)



S.29 T.2S.,R8E  
M.D.M.

Government Corner  Control  N. \_\_\_\_\_ E. \_\_\_\_\_  
 Meander  Property  Elevation. \_\_\_\_\_  
 Rancho  Other  Units Metric  U.S. Survey Foot   
 Horizontal Datum NAD83  
 Zone 3 Epoch Date 2005  
 Date of Survey November 30, 2017 Vertical Datum \_\_\_\_\_  
 Complies with Public Resources Code §§8801-8819  
 Complies with Public Resources Code §§8890-8902

PLS Act Ref.:  8765(d)  8771  8773  Other:  
 Corner/Monument:  Left as found  Established  Rebuilt  Pre-Construction  
 Found and tagged  Reestablished  Referenced  Post-Construction

Narrative of corner identified and monument as found, set, reset, replaced, or removed:

See sheet #2 for description(s):

Set or found auxiliary tie points as shown. Using the City of Ripon GPS survey control network, Record of Survey Book 35, page 196, as coordinate control, I measured the tie points and the found monuments as shown.

### SURVEYOR'S STATEMENT

This Corner Record was prepared by me or under my direction in conformance with the Professional Land Surveyor's Act on December 11, 2017  
Signed David L Harris P.L.S. or R.C.E. No. PLS 5443



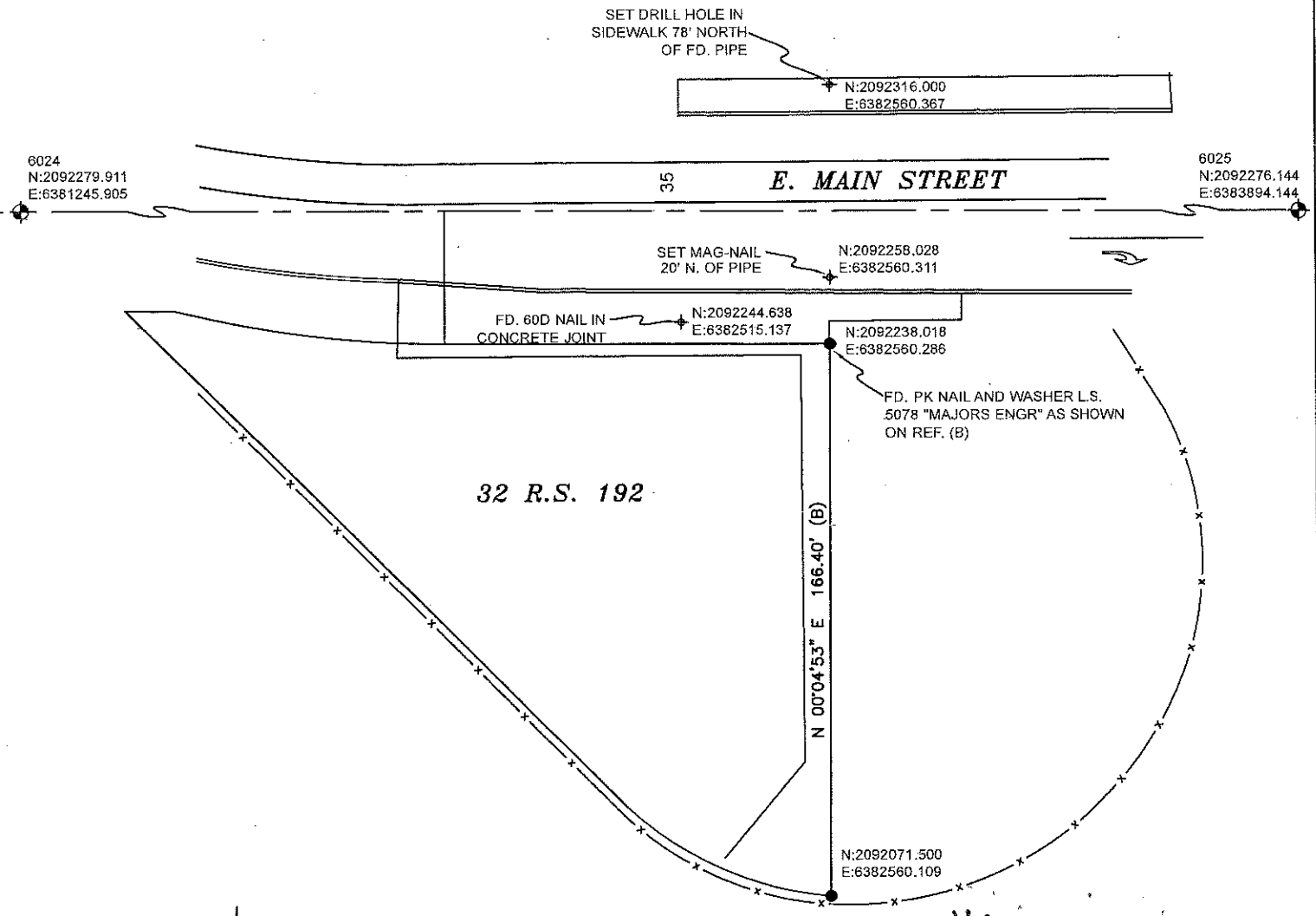
### COUNTY SURVEYOR'S STATEMENT

This Corner Record was received January 6, 2018  
and examined and filed February 7, 2018  
Signed Warren D. Smith P.L.S. or R.C.E. No. 4842

Title County Surveyor

County Surveyor's Comment





- (A) BOOK 35 OF SURVEYS, PAGE 196
- (B) BOOK 32 OF SURVEYS, PAGE 192

- " FOUND 2"—1/2" BRASS CAP FOR CITY OF RIPON CONTROL POINT PER (A)
- ⊕— " SET REFERENCE POINT AS NOTED
- " FOUND 1—1/2" IRON PIPE PER (B)

NOTE:  
COORDINATES SHOWN WERE TAKEN FROM CITY OF RIPON G.P.S. SURVEY CONTROL NETWORK RECORD OF SURVEY BOOK 35, PAGE 196, SAN JOAQUIN COUNTY RECORDS.