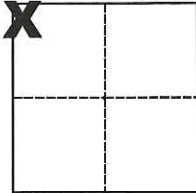


CORNER RECORD

Agency Index CR-18-34
 Document Number _____

City of Tracy County of San Joaquin, California
 Brief Legal Description Northwest corner of Section 7, T.3S., R.5E., M.D.B. & M.



Sec. 7, T.3S., R.5E.,
 M.D.B. & M.

CORNER TYPE

Government Corner Control
 Meander Property
 Rancho Other
 Date of Survey November 14, 2017

COORDINATES (Optional)

N. _____ E. _____
 Elevation _____
 Units Metric U.S. Survey Foot
 Horizontal Datum _____
 Zone _____ Epoch Date _____
 Vertical Datum _____

Complies with Public Resources Code §§8801-8819
 Complies with Public Resources Code §§8890-8902

PLS Act Ref.: 8765(d) 8771 8773 Other:
 Corner/Monument: Left as found Established Rebuilt Pre-Construction
 Found and tagged Reestablished Referenced Post-Construction

Narrative of corner identified and monument as found, set, reset, replaced, or removed:
 See sheet #2 for description(s):

SURVEYOR'S STATEMENT

This Corner Record was prepared by me or under my direction in conformance with
 the Professional Land Surveyors' Act on Nov. 21, 2017
 Signed Michael L. Quartaroli P.L.S. or R.C.E. No. L.S. 4450



COUNTY SURVEYOR'S STATEMENT

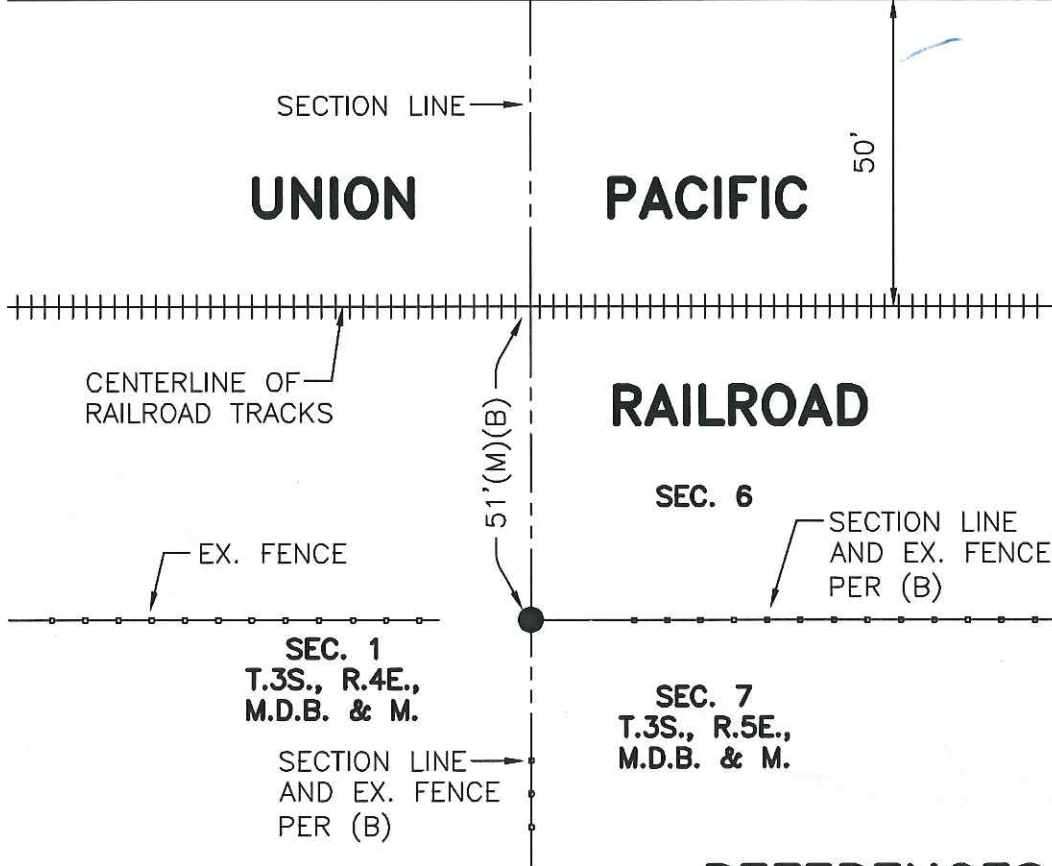
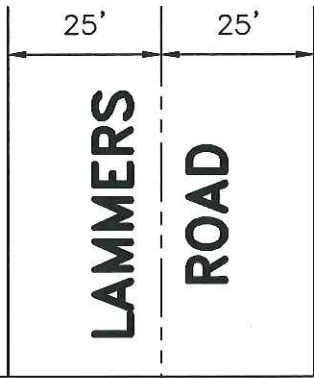
This Corner Record was received January 4, 2018
 and examined and filed February 7, 2018
 Signed Warren D. Smith P.L.S. or R.C.E. No. 4842
 Title County Surveyor



County Surveyor's Comment



SCALE: 1" = 30'
2015-243



REFERENCES

- (A) P.M. 22-126, S.J.C.R.
- (B) R.S. 7-285, S.J.C.R.

LEGEND

- INDICATES FOUND 2" IRON PIPE PER (A), 6" DEEP, SET BRASS WASHER STAMPED LS 4450 ON TOP OF PIPE
- FD. INDICATES FOUND ON THIS SURVEY
- R.S. INDICATES RECORD OF SURVEY, BOOK AND PAGE, S.J.C.R.
- P.M. INDICATES PARCEL MAP, BOOK AND PAGE, S.J.C.R.
- S.J.C.R. INDICATES SAN JOAQUIN COUNTY RECORDS