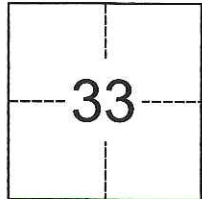


CORNER RECORD

Agency Index CR-18-28
Document Number _____

City of Manteca County of San Joaquin, California
Brief Legal Description Lot 3; Book 20 of Maps and Plats, Page 60



CORNER TYPE

Government Corner Control
Meander Property
Rancho Other

Date of Survey December 12, 2017

COORDINATES (Optional)

N. _____ E. _____
Elevation _____
Units Metric U.S. Survey Foot
Horizontal Datum _____
Zone _____ Epoch Date _____
Vertical Datum _____

T.1S., R.7E., M.D.B.& M.

Complies with Public Resources Code §§8801-8819
 Complies with Public Resources Code §§8890-8902

PLS Act Ref.: 8765(d) 8771 8773 Other:
Corner/Monument: Left as found Established Rebuilt Pre-Construction
 Found and tagged Reestablished Referenced Post-Construction

Narrative of corner identified and monument as found, set, reset, replaced, or removed:
 See sheet #2 for description(s):

It is the purpose of this corner record to establish ties to existing monuments prior to construction. The monuments were found and tied out as depicted on attached exhibit.

SURVEYOR'S STATEMENT

This Corner Record was prepared by me or under my direction in conformance with
the Professional Land Surveyors' Act on December 12, 2017
Signed [Signature] P.L.S. or R.C.E. No. 7889



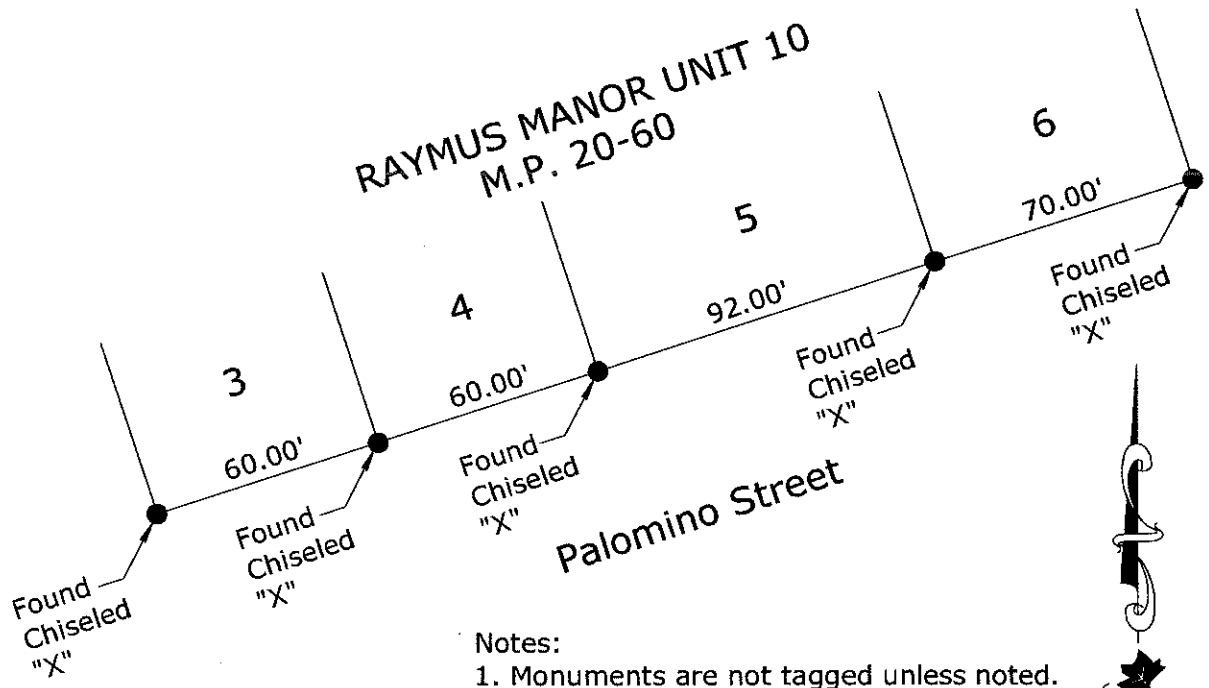
COUNTY SURVEYOR'S STATEMENT

This Corner Record was received December 20, 2017
and examined and filed January 18, 2018
Signed Warren D. Smith P.L.S. or R.C.E. No. 4842
Title County Surveyor



County Surveyor's Comment

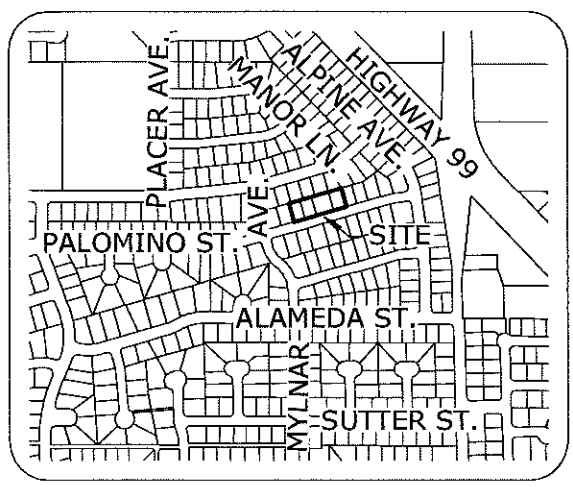
RAYMUS MANOR UNIT 10
M.P. 20-60



- Notes:
 1. Monuments are not tagged unless noted.
 2. No attempt was made to verify the monument(s)



No Scale



VICINITY MAP
No Scale



PREPARED IN THE OFFICE OF:
BAUMBACH & PIAZZA, INC.
 CIVIL ENGINEERS • SURVEYORS
 www.bpengineers.net
 209.368.6618
 323 W. Elm St.
 Lodi, CA 95240