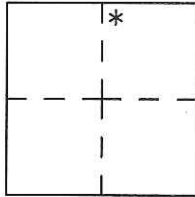


# CORNER RECORD

Agency Index CR-18-26  
Document Number \_\_\_\_\_

City of Tracy County of San Joaquin, California

Brief Legal Description Lots 51-58 Pebblebrooke Unit No.1 33 M 36



S.4 T.3S.,R5E  
M.D.M.

### CORNER TYPE

Government Corner  Control   
Meander  Property   
Rancho  Other

### COORDINATES (Optional)

N. \_\_\_\_\_ E. \_\_\_\_\_  
Elevation. \_\_\_\_\_  
Units Metric  U.S. Survey Foot   
Horizontal Datum \_\_\_\_\_  
Zone \_\_\_\_\_ Epoch Date \_\_\_\_\_  
Vertical Datum \_\_\_\_\_

Date of Survey November 30, 2017

Complies with Public Resources Code §§8801-8819  
 Complies with Public Resources Code §§8890-8902

PLS Act Ref.:  8765(d)  8771  8773  Other:  
Corner/Monument:  Left as found  Established  Rebuilt  Pre-Construction  
 Found and tagged  Reestablished  Referenced  Post-Construction

Narrative of corner identified and monument as found, set, reset, replaced, or removed:

See sheet #2 for description(s):

Set rear witness corners and front witness crosses for Lots 51-58 by using centerline monuments and other points from the record map 33 M 36 as a basis for control. The rear lot corners were most likely removed during construction of a large retaining wall. This corner record is in conjunction with building permit No. G17-0003

### SURVEYOR'S STATEMENT

This Corner Record was prepared by me or under my direction in conformance with

the Professional Land Surveyor's Act on December 12, 2017

Signed David L. Harris P.L.S. or R.C.E. No. PLS 5443



### COUNTY SURVEYOR'S STATEMENT

This Corner Record was received December 18, 2017

and examined and filed January 18, 2018

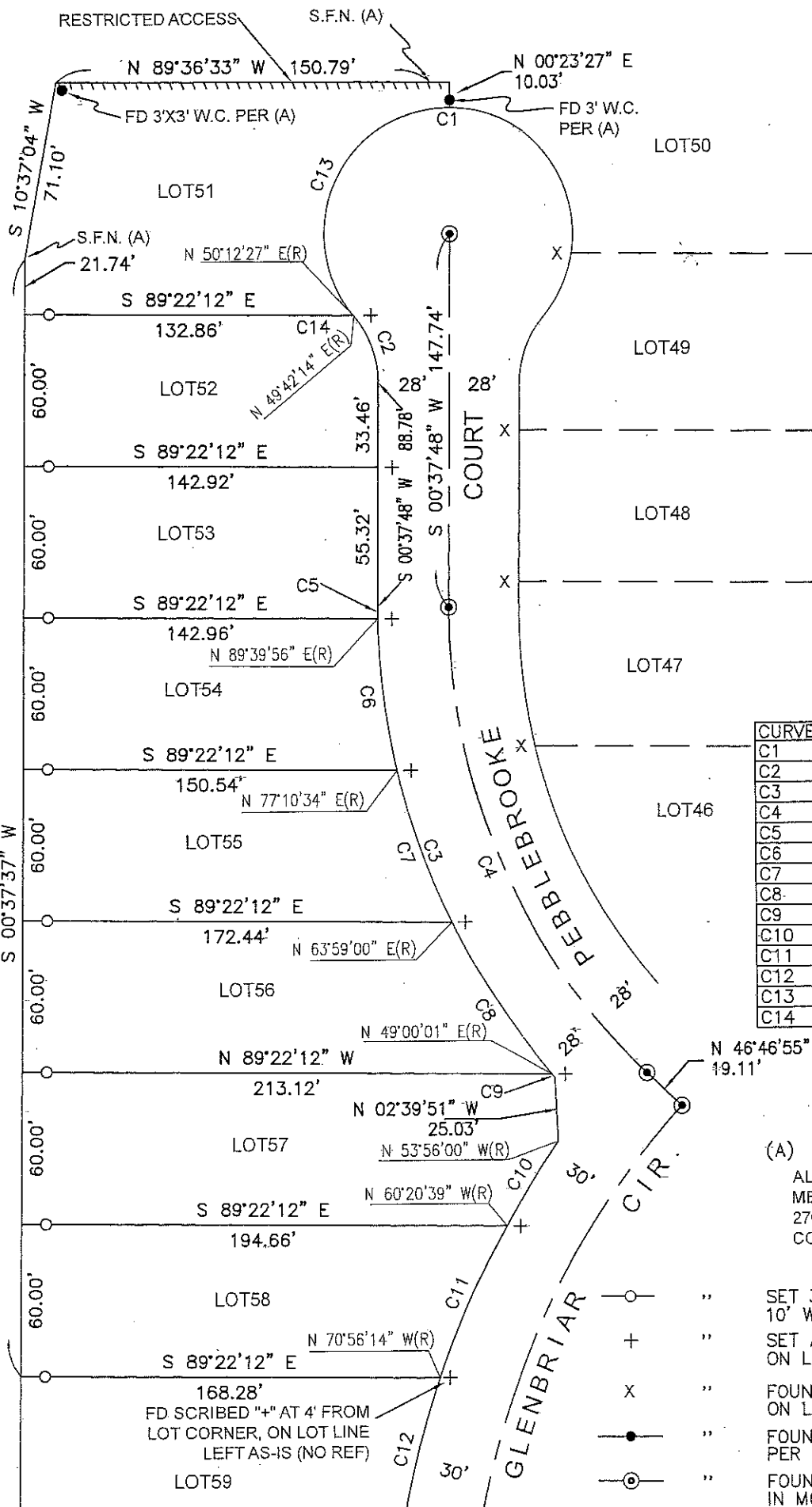
Signed Warren D. Smith P.L.S. or R.C.E. No. 4842

Title County Surveyor

County Surveyor's Comment



ALL REAR LOT CORNERS APPEAR TO HAVE BEEN DESTROYED BY RETAINING WALL CONSTRUCTION



NOTE:  
WITNESS CORNERS WERE SET AT THE TOE OF STEEP SLOPE 10 FEET EAST OF THE RETAINING WALL.

CURVE	DELTA ANGLE	RADIUS	ARC LENGTH
C1	26°15'08"	50.00'	228.51'
C2	40°55'34"	40.00'	28.57'
C3	42°01'33"	278.00'	203.91'
C4	47°24'44"	250.00'	206.87'
C5	0°57'53"	278.00'	4.68'
C6	12°29'21"	278.00'	60.60'
C7	13°11'35"	278.00'	64.01'
C8	14°58'59"	278.00'	72.70'
C9	0°23'46"	278.00'	1.92'
C10	6°24'39"	355.00'	39.72'
C11	10°35'35"	355.00'	65.63'
C12	9°58'10"	355.00'	61.77'
C13	130°41'13"	50.00'	114.05'
C14	0°30'18"	50.00'	0.44'

- (A) BOOK 33 OF MAPS, PAGE 36B
- ALL DIMENSIONS ARE RECORD AND MEASURED PER REFERENCE (A) TRACT NO. 2708 SUBDIVISIONS OF SAN JOAQUIN COUNTY PEBBLEBROOKE, UNIT NO. 1
- SET 3/4" FRAMING PIN W/ TAG L.S.5443
- 10' WITNESS CORNER ON LOT LINE
- + SET A CUT CROSS 5'6" ON LOT LINE PROJECTION AS PER REF (A)
- x FOUND CHISELED "+" IN SIDEWALK 5'6" ON LOT LINE PROJECTION PER (A)
- FOUND 3/4" IRON PIPE W/ TAG L.S.4876 PER (A)
- ⊗ FOUND 3/4" IRON PIPE W/ TAG L.S.4876 IN MONUMENT WELL PER (A)