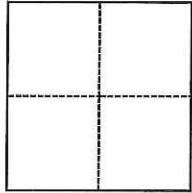


CORNER RECORD

Agency Index CR-18-24
Document Number _____

City of STOCKTON County of SAN JOAQUIN, California
Brief Legal Description 3' SOUTH AND 5' EAST OF BLOCK CORNER AS SHOWN ON 32-R.S.-90



BLK. 77 SEC. 20
C.M.W. GRANT

CORNER TYPE

- Government Corner
- Meander
- Rancho
- Control
- Property
- Other

Date of Survey August 31, 2017

COORDINATES (Optional)

N. _____ E. _____
 Elevation _____
 Units Metric U.S. Survey Foot
 Horizontal Datum _____
 Zone _____ Epoch Date _____
 Vertical Datum _____
 Complies with Public Resources Code §§8801-8819
 Complies with Public Resources Code §§8890-8902

- PLS Act Ref.: 8765(d) 8771 8773 Other:
- Corner/Monument: Left as found Established Rebuilt Pre-Construction
 Found and tagged Reestablished Referenced Post-Construction

Narrative of corner identified and monument as found, set, reset, replaced, or removed:

See sheet #2 for description(s):

FOUND CHISELED CROSS IN SIDEWALK AS SHOWN ON 32-R.S.-90. LEFT AS FOUND. SEE SKETCH ON BACK

SURVEYOR'S STATEMENT

This Corner Record was prepared by me or under my direction in conformance with

the Professional Land Surveyors' Act on October 6, 2017

Signed [Signature] P.L.S. or R.C.E. No. 8971



COUNTY SURVEYOR'S STATEMENT

This Corner Record was received December 14, 2017

and examined and filed January 18, 2018

Signed Warren D. Smith P.L.S. or R.C.E. No. 4842

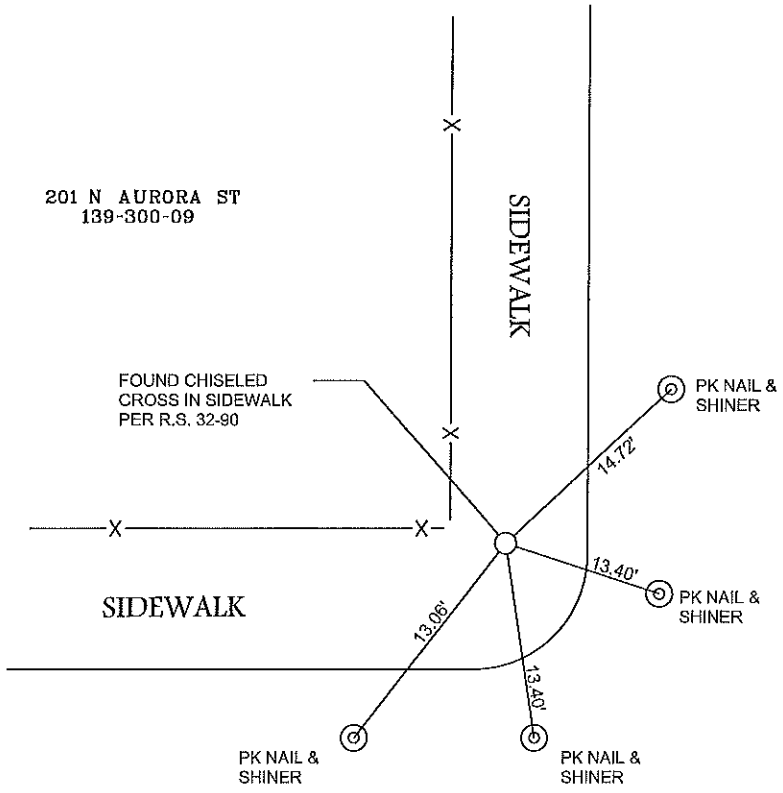
Title County Surveyor

County Surveyor's Comment





201 N AURORA ST
139-300-09



STREET
AURORA

CHANNEL

STREET