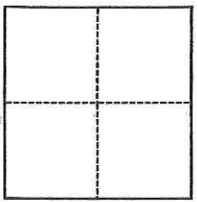


CORNER RECORD

Agency Index CR-18-19
 Document Number _____

City of _____ County of San Joaquin, California
 Brief Legal Description Portion of Section 17, T. 2 S., R. 9 E., M.D.M.



- CORNER TYPE**
- Government Corner
 - Meander
 - Rancho
 - Control
 - Property
 - Other

Date of Survey September 5, 2017

- COORDINATES (Optional)**
- N. _____ E. _____
 Elevation _____
 Units Metric U.S. Survey Foot
 Horizontal Datum _____
 Zone _____ Epoch Date _____
 Vertical Datum _____
 Complies with Public Resources Code §§8801-8819
 Complies with Public Resources Code §§8890-8902

- PLS Act Ref.: 8765(d) 8771 8773 Other:
 Corner/Monument: Left as found Established Rebuilt Pre-Construction
 Found and tagged Reestablished Referenced Post-Construction

Narrative of corner identified and monument as found, set, reset, replaced, or removed:
 See sheet #2 for description(s):
 Corners set on Record of Survey, Book 6, Page 299, being a 1-1/4" Iron Pipe were searched for and not found. Corners appear to have been destroyed by sewer line construction and site grading. Reestablished corners by record distances and 25' offset from existing C/L of Railroad & North R/W of River Road as illustrated on said survey, held record angle and distance along S.S.J.I.D. Canal R/W. As shown on sheet 2 of 2 of this corner record. Set 3/4" Iron pipe with plastic plug stamped L.S. 7126.

SURVEYOR'S STATEMENT

This Corner Record was prepared by me or under my direction in conformance with the Professional Land Surveyors' Act on September 5, 2017
 Signed *Dave Skidmore* P.L.S. or R.C.E. No. 7126



COUNTY SURVEYOR'S STATEMENT

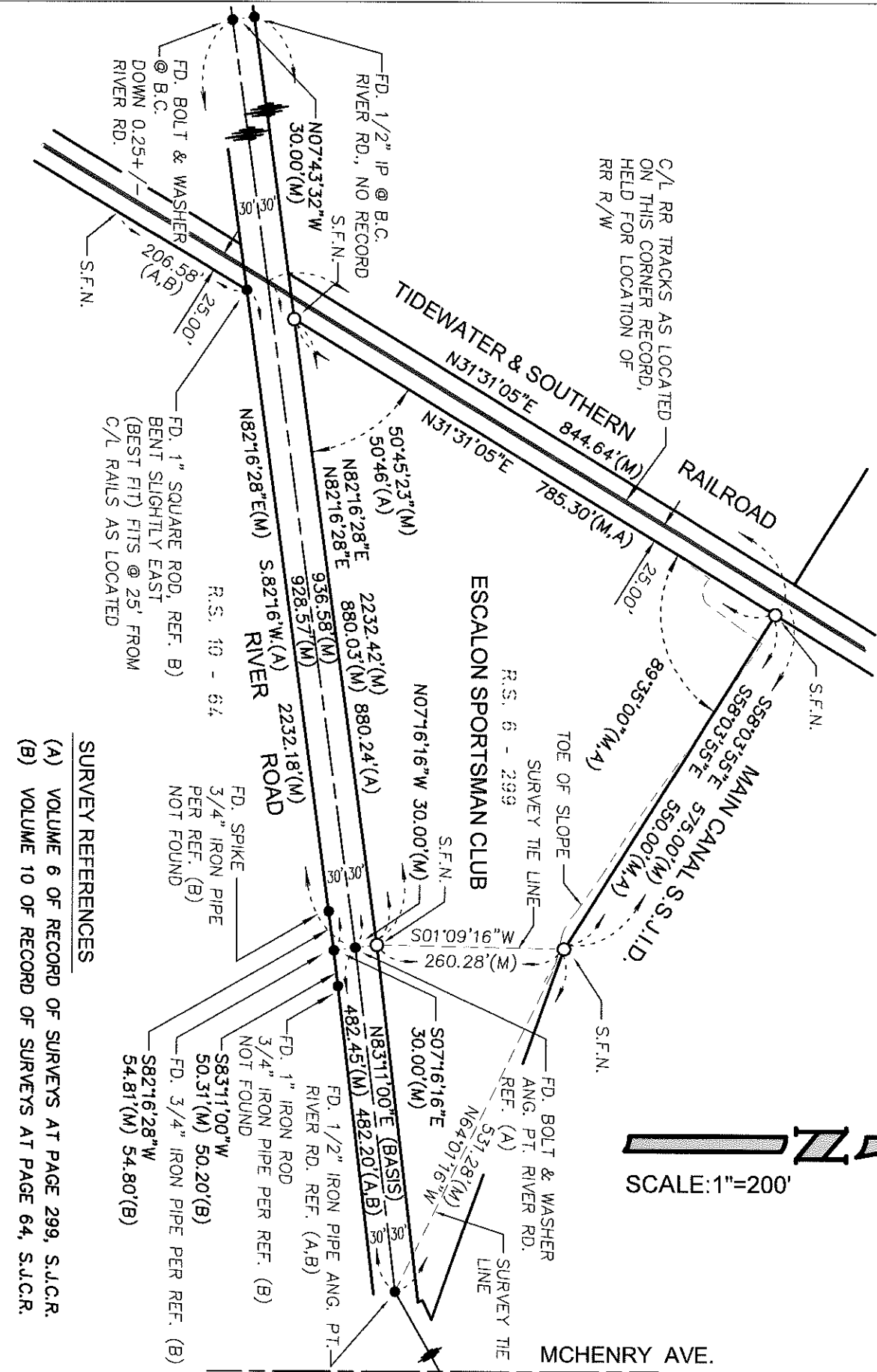
This Corner Record was received December 7, 2017
 and examined and filed January 18, 2018
 Signed *Warren D. Smith* P.L.S. or R.C.E. No. 4842
 Title County Surveyor



County Surveyor's Comment

LEGEND

- S.F.N. INDICATES SEARCHED FOR MONUMENT OF RECORD, NOT FOUND
- INDICATES MONUMENT FOUND AS NOTED
- INDICATES SET 3/4" x 30" LONG IRON PIPE W/PLASTIC PLUG STAMPED "L.S. 7126"



SURVEY REFERENCES

- (A) VOLUME 6 OF RECORD OF SURVEYS AT PAGE 299, S.J.C.R.
- (B) VOLUME 10 OF RECORD OF SURVEYS AT PAGE 64, S.J.C.R.