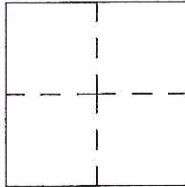


# CORNER RECORD

Agency Index CR-18-02  
Document Number \_\_\_\_\_

City of \_\_\_\_\_ County of San Joaquin, California

Brief Legal Description JACK TONE ROAD 1333' +/- SOUTH OF SARGENT ROAD  
(ON SECTION 12 EAST LINE, TOWNSHIP 3 NORTH, RANGE 7 EAST, MOUNT DIABLO BASE AND MERIDIAN)



**CORNER TYPE**

Government Corner  Control  Elevation. \_\_\_\_\_  
 Meander  Property  Units Metric  U.S. Survey Foot   
 Rancho  Other  Horizontal Datum \_\_\_\_\_  
 Date of Survey December 1, 2017 Zone \_\_\_\_\_ Epoch Date \_\_\_\_\_  
 Vertical Datum \_\_\_\_\_  
 Complies with Public Resources Code §§8801-8819  
 Complies with Public Resources Code §§8890-8902

PLS Act Ref.:  8765(d)  8771  8773  Other: \_\_\_\_\_  
 Corner/Monument:  Left as found  Established  Rebuilt  Pre-Construction  
 Found and tagged  Reestablished  Referenced  Post-Construction

Narrative of corner identified and monument as found, set, reset, replaced, or removed:  
 See sheet #2 for description(s):

### SURVEYOR'S STATEMENT

This Corner Record was prepared by me or under my direction in conformance with the Professional Land Surveyor's Act on December 04, 2017

Signed James E. Hart P.L.S. or R.C.E. No. 8657



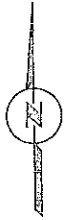
### COUNTY SURVEYOR'S STATEMENT

This Corner Record was received December 4, 2017 and examined and filed January 16, 2018

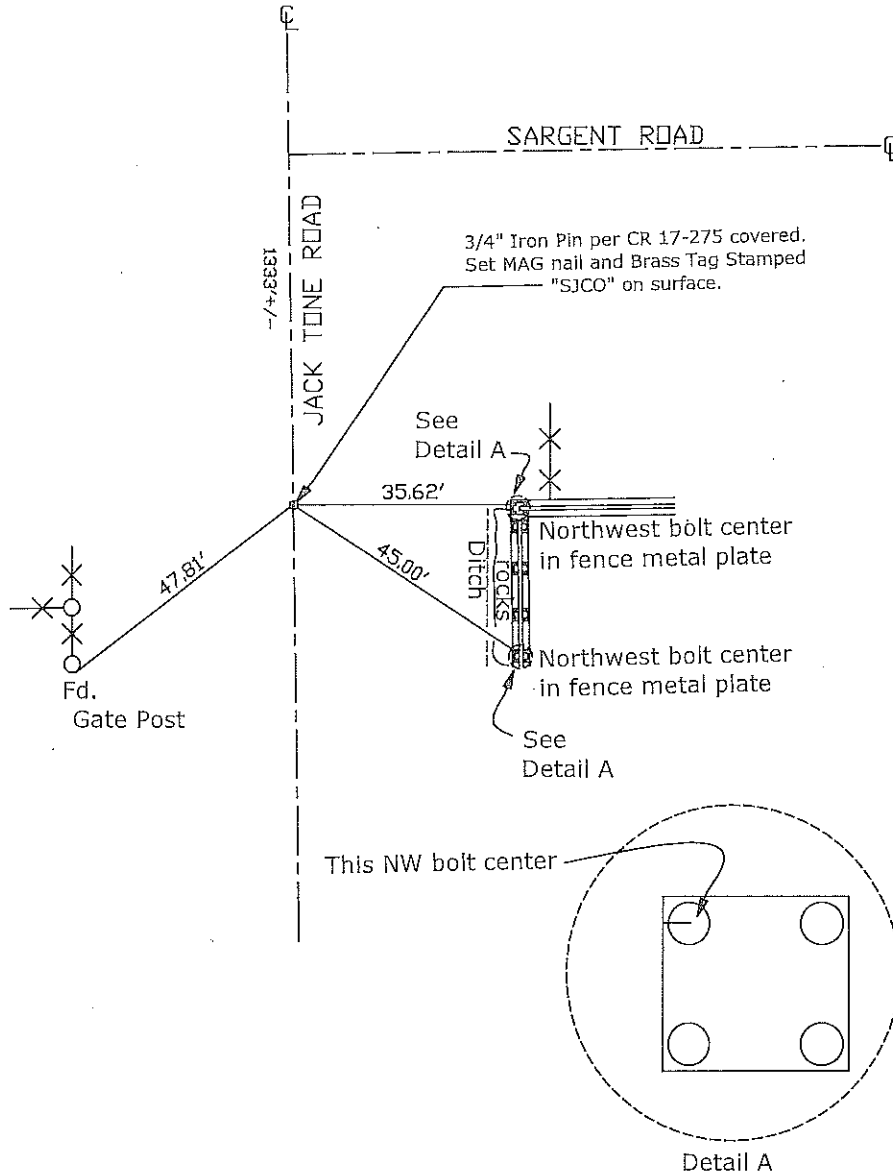
Signed Warren D. Smith P.L.S. or R.C.E. No. 4842  
Title County Surveyor

County Surveyor's Comment





N.T.S.



CR=Corner Record  
 FP=Fence Post  
 JP=Joint Pole  
 LP=Light Pole  
 PP=Power Pole  
 GP=Guy Pole  
 SP=Service Pole  
 TP=Telephone Pole  
 S.F.N.=Searched Found Nothing  
 N.T.S.=Not To Scale  
 M&P=Maps & Plats  
 PM=Parcel Map  
 RS=Record of Survey  
 FB=Field Book  
 N=North  
 DI=Drain Inlet  
 TDC=Top of Curb

Set=Conc. Nail with Brass Washer Stamped  
 "S.J. Co.", unless otherwise noted  
 Fd.=Found Conc. Nail with Brass Washer Stamped  
 "S.J. Co.", unless otherwise noted  
 Note: Found Monuments are not tagged  
 unless otherwise noted.

"No Attempt Was Made to Verify the Monument(s)"