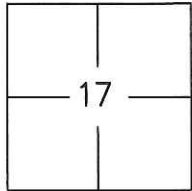


CORNER RECORD

Agency Index CR-17-373
Document Number _____

City of Stockton County of San Joaquin, California
Brief Legal Description Colonial West, Unit No. 4, Volume 19 of Maps & Plats, Page 71.



T 2 N., R. 6 E., M.D.B.&M

CORNER TYPE

Government Corner Control
Meander Property
Rancho Other

Date of Survey September 22, 2017

COORDINATES (Optional)

N. _____ E. _____

Elevation _____

Units Metric U.S. Survey Foot

Horizontal Datum NAD83

Zone III Epoch Date 1991.35

Vertical Datum _____

Complies with Public Resources Code §§8801-8819

Complies with Public Resources Code §§8890-8902

PLS Act Ref: 8765(d) 8771 8773 Other: _____

Corner/
Monument: Left as found Established Rebuilt Pre-Construction
 Found and tagged Reestablished Referenced Post-Construction

Narrative of corner identified and monument as found, set, reset, replaced, or removed:

See sheet #2 for description(s) :

Used conventional survey methods and CR 16-65 to reestablish the position of obliterated cut cross, as shown on page 2. Set cut cross with brass tags stamped L.S. 7051 in concrete. Also, found 3/4" iron pipes in wells, tagged "R.C.E. 15831", as shown on page 2.

SURVEYOR'S STATEMENT

This Corner Record was prepared by me or under my direction in conformance with the Professional Land Surveyors' Act on October 17, 2017.
Signed _____ P.L.S. or R.C.E. No. 7051



COUNTY SURVEYOR'S STATEMENT

This Corner Record was received November 29, 2017
and examined and filed December 28, 2017.
Signed Warren D. Smith P.L.S. or R.C.E. No. 4842
Title County Surveyor



County Surveyor's Comment _____

STATEMENT OF PURPOSE:

THE PURPOSE OF THIS SURVEY IS TO RECORD AND REESTABLISH THE LOCATION OF MONUMENTS ORIGINALLY SHOWN ON CR 16-65 DISTURBED AFTER THE CONSTRUCTION OF UNDERGROUND IMPROVEMENTS. THE PURPOSE OF THIS SURVEY IS NOT TO MAKE PROPERTY LINE DETERMINATIONS. LOT LINES SHOWN HEREON ARE FOR GENERAL LOCATION AND INFORMATIONAL PURPOSES ONLY.

DATUM STATEMENT:

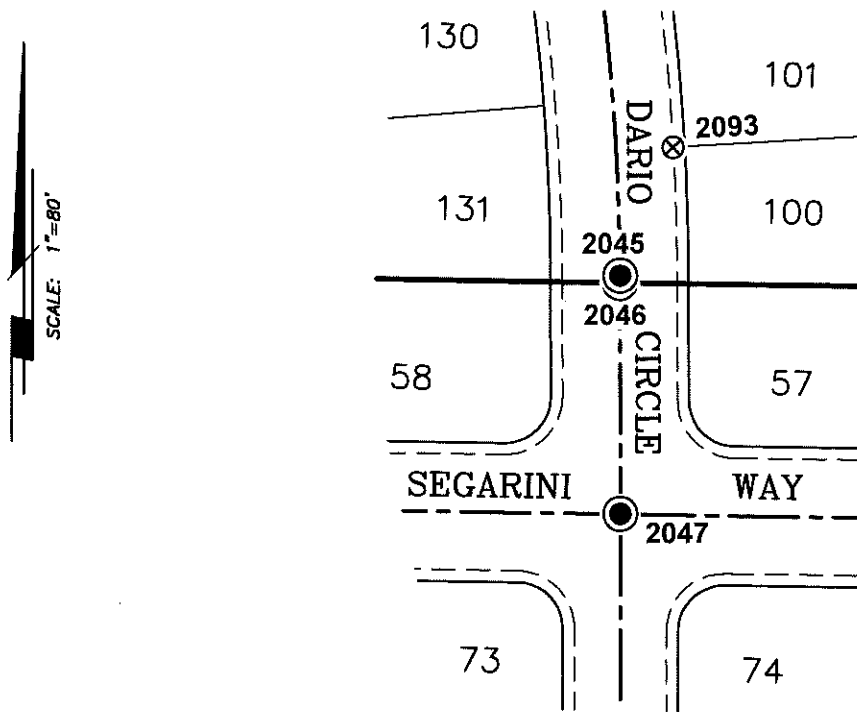
COORDINATES SHOWN HEREON ARE GRID AND ARE BASED ON CITY OF STOCKTON MONUMENTS 4N-6 AND 4N-10, CALIFORNIA COORDINATE SYSTEM (CCS83), ZONE III, 1983 NAD, (1991.35 EPOCH STOCKTON & SAN JOAQUIN COUNTY GPS ADJUSTMENT) AND SHOWN ON RECORD OF SURVEY BOOK 33 OF SURVEYS, PAGE 20. THE PROJECT SPECIFIC COMBINED SCALE FACTOR IS 0.99994060.

LEGEND:

- ⊗ INDICATES SET BRASS TAG STAMPED L.S. 7051.
- ⊙ INDICATES FOUND 3/4" IRON PIPES IN WELL TAGGED R.C.E. 15831

GRID COORDINATES (U.S. SURVEY FEET)		
POINT	NORTHING	EASTING
2045	2196922.63'	6318922.79'
2046	2196919.47'	6318922.74'
2047	2196819.43'	6318922.99'
2093	2196978.29'	6318945.90'

19-MP-71



19-MP-52